



HILTON KING & LOCKE  
SPECIALISTS IN PROPERTY



Corner House Gregory Road, Hedgerley, Buckinghamshire. SL2 3XL.

£895,000 Freehold



Corner House is a charming and distinctive three-bedroom detached home, rich in character and offering exceptional potential for extension to the side or rear (subject to the usual consents), thanks to its generous gardens. Set on a plot of approximately 0.16 acres, this home seamlessly blends historic charm with modern living.

Occupying a prime position at the junction of Hedgerley Hill and Gregory Road, this sought-after residence is located in the award-winning village of Hedgerley. Steeped in history, the property has previously served as both the local doctor's surgery and the village sweet shop, adding to its unique appeal.

The ground floor boasts an elegant bay-fronted living room (15'8 x 12'11), featuring an original open brick fireplace, perfect for cosy evenings. A second sitting room (15'8 x 11'2) offers another charming fireplace, French doors leading to the west-facing garden, and direct access to the dining room/study (15'5 x 9'2), which enjoys tranquil garden views and yet another open brick fireplace.

At the heart of the home is the spacious kitchen/breakfast room (24'6 x 19'4), thoughtfully designed with an array of fitted units, granite worktops, a butler sink, and a stunning ceiling lantern that floods the space with natural light. Integrated Baumatic appliances include a dishwasher, tumble dryer, and two ovens, complemented by a Harveys Water Softener. A cloakroom completes the ground floor.

Upstairs, the dual-aspect master bedroom (15'8 x 11'2) benefits from its own ensuite shower room, while the second bedroom (15'9 x 13'3) impresses with a triple aspect and a striking bay window. A well-proportioned third bedroom and a family bathroom complete the first floor.

## OUTSIDE

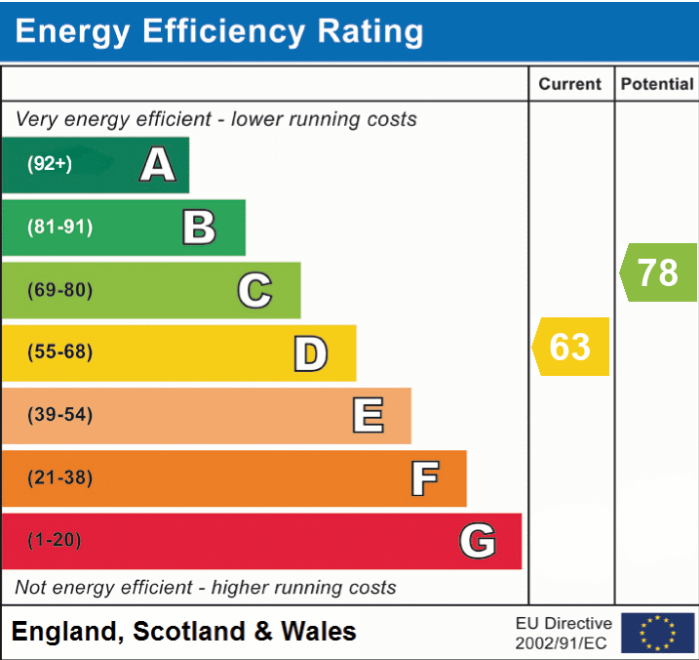


Set within beautifully maintained gardens on three sides, the property enjoys a secluded front garden with a gated driveway, providing ample off-street parking. Additionally, a rear driveway at the end of the garden allows access to the garage/store, which was previously used as a home office and comes equipped with lighting and power. The rear garden is mainly laid to lawn, offering a high degree of privacy with a variety of mature shrubs, plants, and a large patio—ideal for entertaining.

AREA

Hedgerley is an award-winning village, regularly recognised as one of Buckinghamshire’s best-kept villages. The property is a short walk from its historic church and the renowned White Horse Pub, famous for its selection of real ales.

For commuters, the location is highly convenient, with easy access to the M40 and M4 motorways. Gerrards Cross Station is within easy reach, offering fast train links to London Marylebone in under 30 minutes and a connection to the London Underground.



**Important Notice**  
Particulars: These particulars are not an offer or contract, nor part of one. You should not rely on statements by Hilton King & Locke Ltd in the particulars or by word of mouth or in writing as being factually accurate about the property, its condition or its value. Hilton King & Locke Ltd does not have any authority to make any representations about the property, and accordingly any information given is entirely without responsibility on the part of the agents, seller(s) or lessor(s).

Photographs etc: The photographs show only certain parts of the property as they appeared at the time they were taken. Areas, measurements and distances given are approximate only.



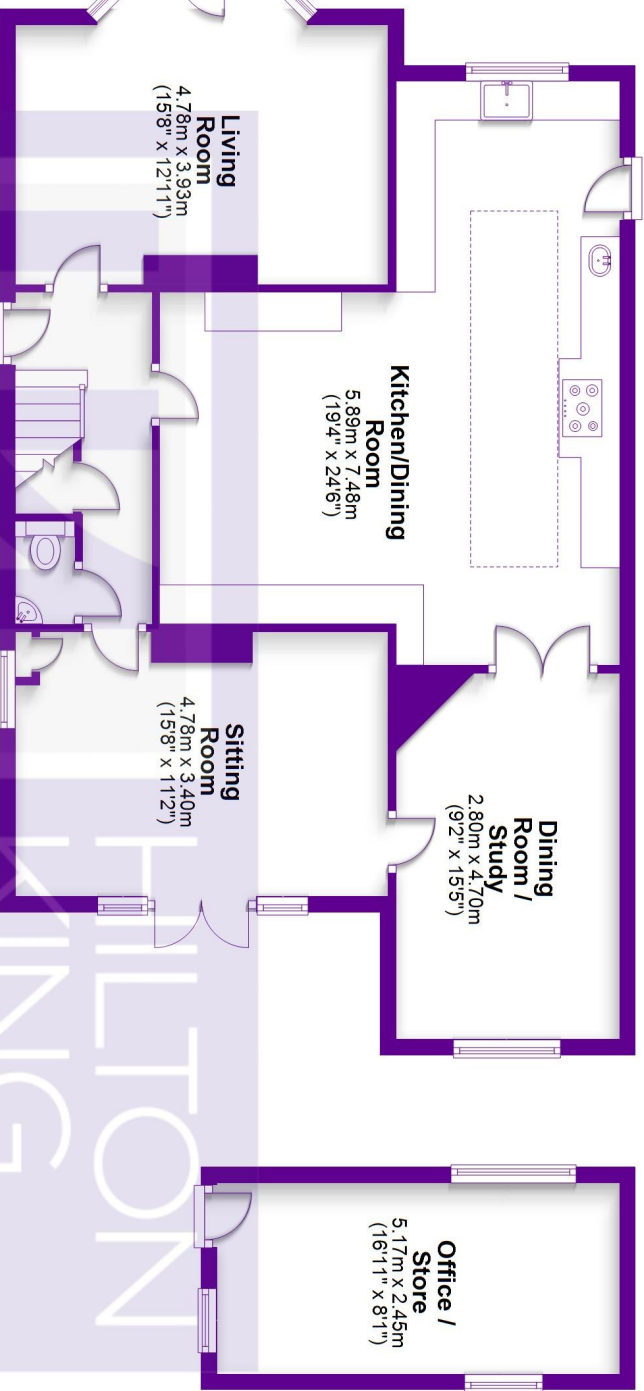
The Broadway  
Farnham Common Buckinghamshire SL2 3QH

Tel: 01753 643555  
fc@hklhome.co.uk



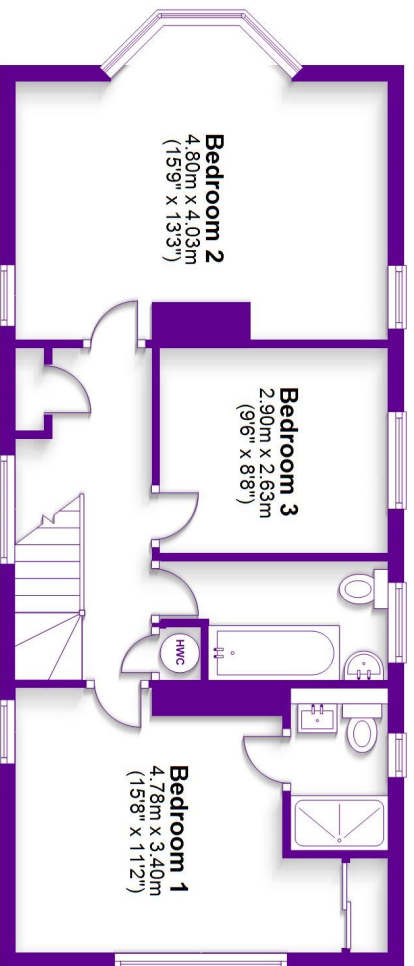
## Ground Floor

Approx. 102.3 sq. metres (1101.1 sq. feet)



## First Floor

Approx. 54.0 sq. metres (581.1 sq. feet)



Total area: approx. 156.3 sq. metres (1682.2 sq. feet)

FOR ILLUSTRATIVE PURPOSES ONLY - NOT TO SCALE  
The position and size of doors, windows, appliances and other features are approximate only. Total areas inc garages & outbuildings  
© My Home Property Marketing - Unauthorised reproduction prohibited.  
Plan produced using PlanUp.