

Jack Taggart & Co

RESIDENTIAL SALES

PALMEIRA SQUARE, BN3 2JB

£525,000

PALMEIRA SQUARE, BN3 2JB

Nestled in the prestigious and highly sought-after Palmeira Square in Hove, this magnificent building stands as a testament to the grandeur and elegance of Regency architecture. Originally conceived as opulent summer retreats for the city's affluent families, these stunning residences have become one of the most exclusive and desirable postcodes in the region. The blend of historic charm and contemporary refinement creates a living experience that is both timeless and sophisticated.

This third-floor apartment offers a unique opportunity to enjoy the perfect combination of space, style, and serenity. Overlooking the beautifully maintained square gardens, the property boasts picturesque views that change with the seasons, from vibrant spring blossoms to the golden hues of autumn. These tranquil surroundings provide a sense of peace and escape, all within the vibrant heart of Hove.

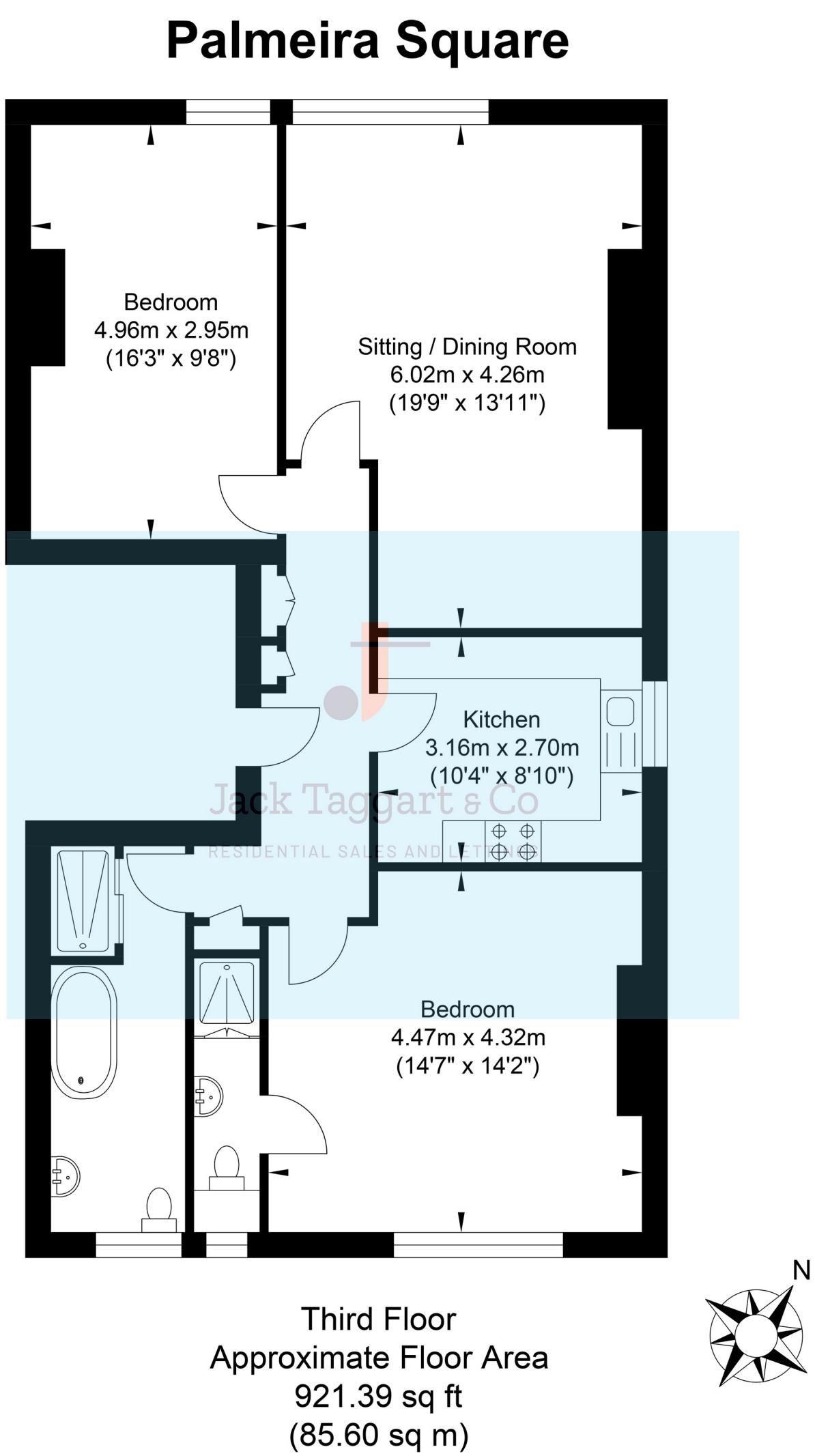
Inside, the apartment impresses with its high ceilings that amplify natural light and create an open, airy ambiance. The expansive living area is a focal point, designed to accommodate both relaxation and entertaining with ease. Newly renovated, the kitchen exudes contemporary elegance, featuring sleek finishes and high-quality appliances that cater to the demands of modern living.

The two generously proportioned double bedrooms offer luxurious comfort and are ideal for restful retreats. Both rooms have been thoughtfully designed to maximize space and functionality, while the property's two beautifully appointed bathrooms provide a touch of indulgence, offering convenience and style in equal measure.

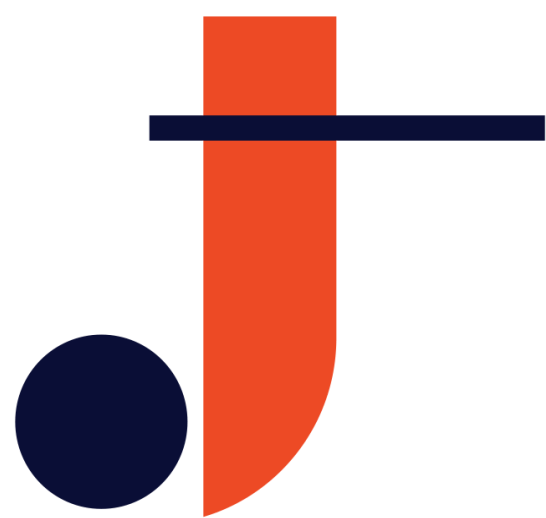
Residents are treated to the charm of Palmeira Square's communal gardens—a serene sanctuary filled with tall trees, manicured lawns, and vibrant flowerbeds. This peaceful green space offers a respite from the bustling city, while the nearby Hove Lawns and the iconic beachfront provide additional opportunities for outdoor leisure, from seaside strolls to sunny picnics.

The location of the property further enhances its appeal. Situated between the lively and eclectic hubs of Western Road and Church Road, residents have access to a plethora of cafes, restaurants, bars, and boutique shops, catering to diverse tastes and preferences. For commuters, Hove Station is just a short walk away, offering efficient rail links, while frequent bus services at the top of the road provide convenient access throughout Brighton and beyond.

This exceptional apartment embodies the quintessential Hove lifestyle—a harmonious blend of historic charm, modern convenience, and coastal living. Whether you're a professional seeking a stylish and centrally located home, an investor looking for a property in one of the city's most coveted areas, or a family in search of a balance between vibrant city life and serene green spaces, this property promises a lifestyle like no other. It's not just a place to live; it's a statement of timeless elegance and modern luxury.



Approximate Gross Internal Area = 85.60 sq m / 921.39 sq ft
Illustration for identification purposed only, measurements are approximate, not to scale.



Jack Taggart & Co

RESIDENTIAL SALES