



Castle Street
Northampton
NN1 2SJ

Offers in Excess of £123,000

bettermove

Castle Street Northampton

Bettermove are pleased to present this charming two bedroom ground floor flat in Northampton town centre.

The property is leasehold with 113 years remaining on the lease; the combined ground rent/service charge is £45 per month. There is an allocated off road parking space in a residents' car park.

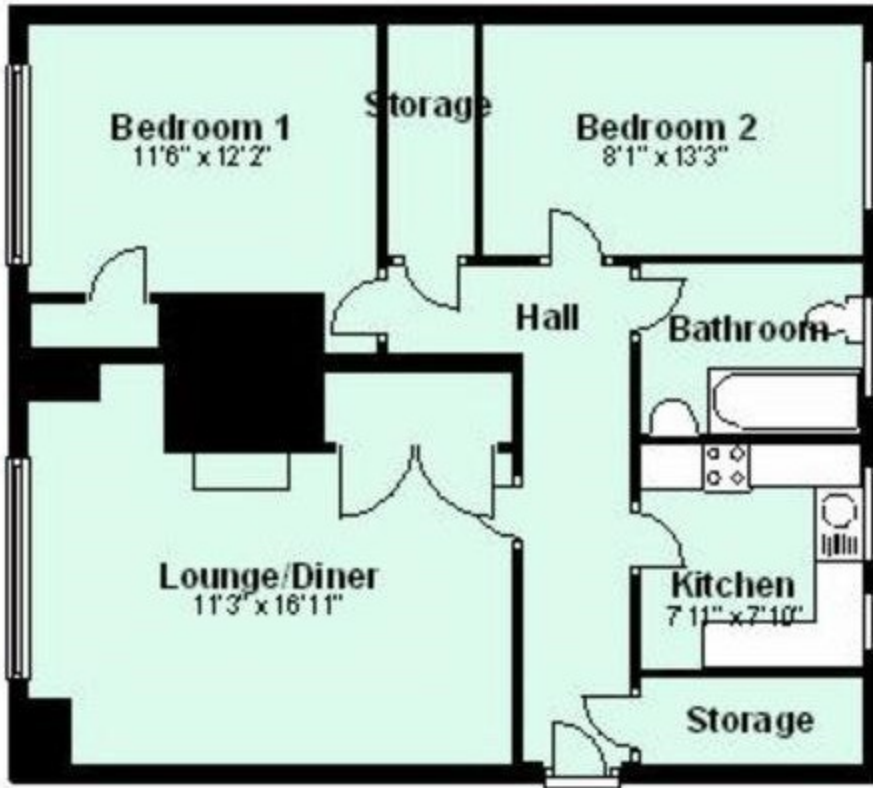
The interior of this beautifully-presented property consists of a spacious lounge/diner, modern fitted kitchen, two bedrooms and a family bathroom. The exterior boasts access to communal lawned gardens, perfect for enjoying the summer months.

Situated in the popular town of Northampton, the property is close to a wide range of amenities, including supermarkets, shops, restaurants and pubs. Transport connections can be found from the A5095, A4500, M1 and Northampton rail station.

This exciting opportunity is not to be missed! All enquiries can be made through Bettermove on 0330 004 0050.



Ground Floor



Energy Efficiency Rating

	Current	Potential
<i>Very energy efficient - lower running costs</i>		
(92 to 100) A		
(81 to 91) B		
(69 to 80) C	71	78
(55 to 68) D		
(39 to 54) E		
(21 to 38) F		
(1 to 20) G		
<i>Not energy efficient - higher running costs</i>		
England, Wales & N.Ireland	EU Directive 2002/91/EC	



20-22 Bridge End, Leeds, LS1 4DJ
t: 0330 004 0050 e: hello@bettermove.co.uk
www.bettermove.co.uk