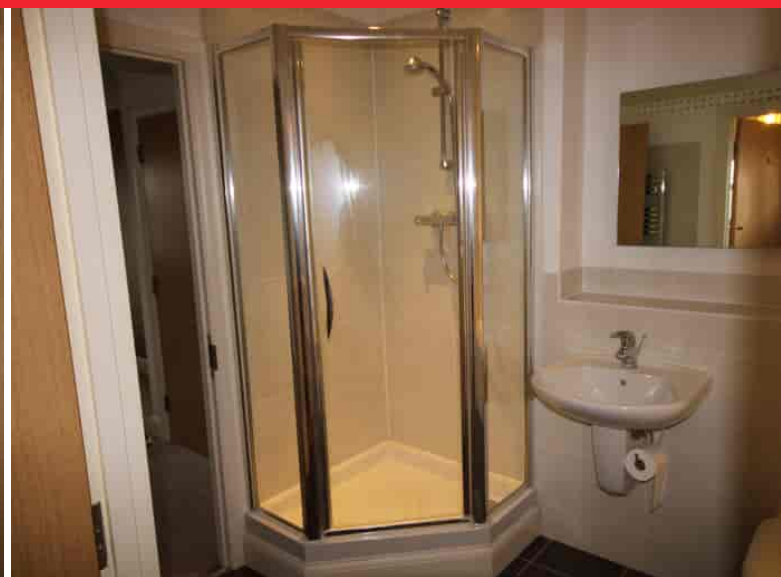


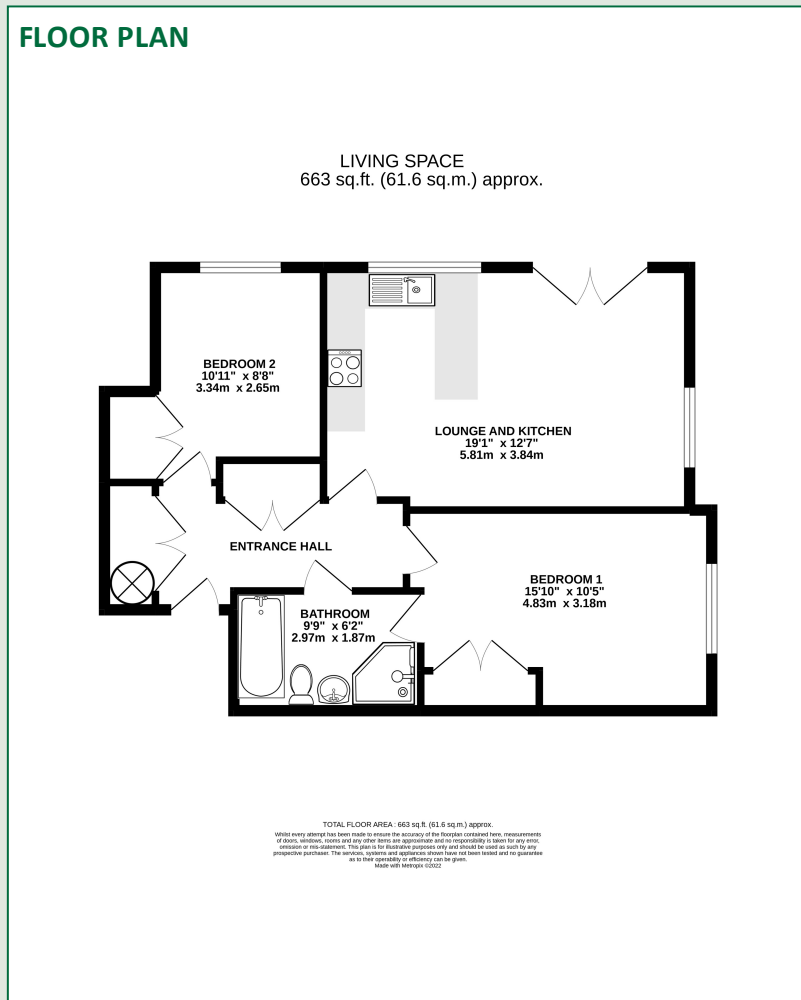
TO LET  
£1,150 pcm



**DESCRIPTION**

An attractive and very spacious two bedroom top floor apartment situated to the south of Newbury within walking distance of Newbury retail Park, Tesco's superstore, medical centre with dispensing chemist, David Lloyd recreational centre and Newbury Rugby club.

TO APPRECIATE THE SPACE AN INTERNAL VIEWING IS HIGHLY RECOMMENDED.



- Well kept communal hall
- Two double bedrooms
- Bathroom with separate shower cubicle
- Open plan living
- Juliet balcony
- Allocated parking space
- Walking distance to Newbury retail park
- White goods included
- Available from 19th February 2024

**ENERGY EFFICIENCY RATING**

Energy Efficiency Rating		Current	Potential
<i>Very energy efficient - lower running costs</i>			
(92-100)	<b>A</b>		
(81-91)	<b>B</b>		
(69-80)	<b>C</b>	71	72
(55-68)	<b>D</b>		
(39-54)	<b>E</b>		
(21-38)	<b>F</b>		
(1-20)	<b>G</b>		
<i>Not energy efficient - higher running costs</i>			
<b>England, Scotland &amp; Wales</b>		EU Directive 2002/91/EC	

