

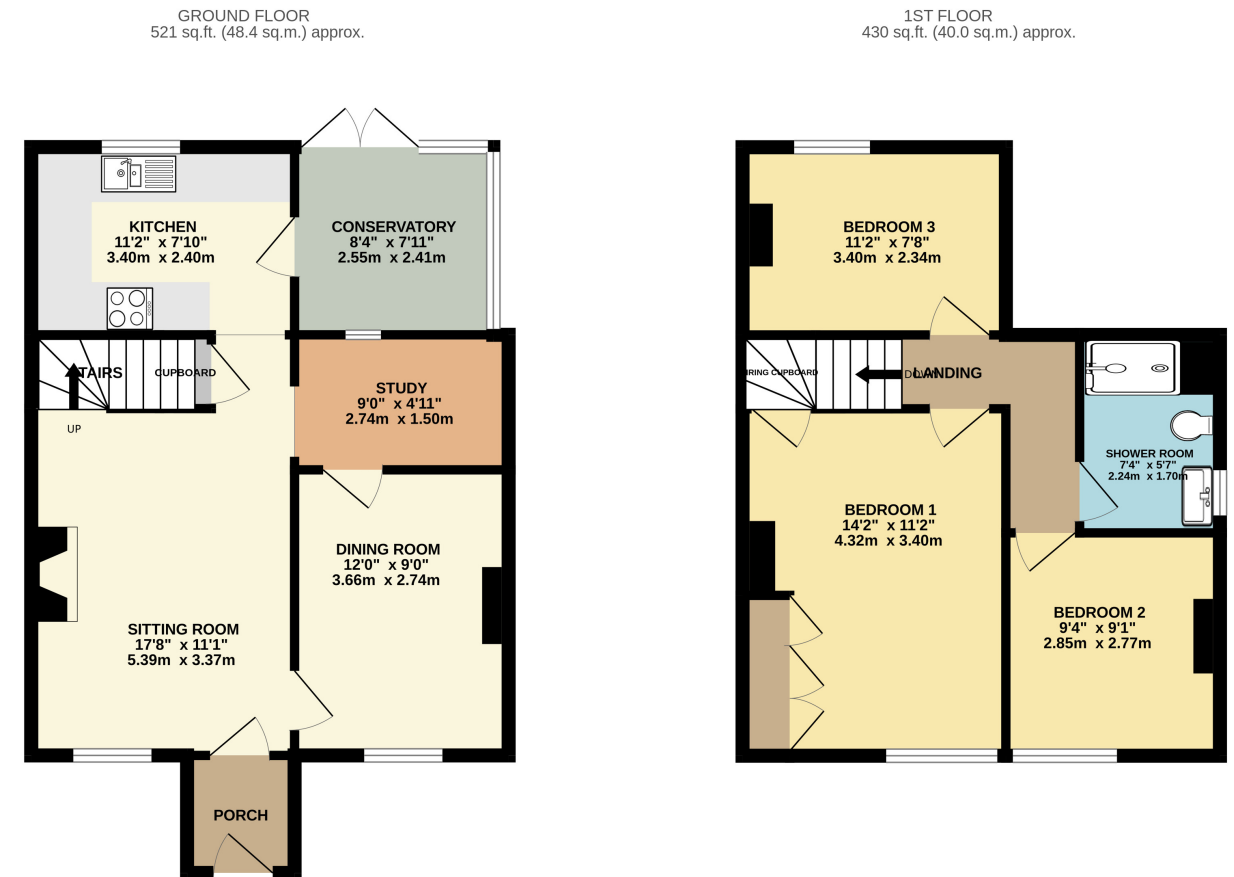


Honey End Lane, Reading, Berkshire.

£435,000 Freehold

Arins Property Services - Very well presented three bedroom Victoria Semi-Detached home with private corner plot garden situated by Prospect Park and close to shops and schools. To the ground floor the property boasts porch, living room, dining room, study, kitchen, and conservatory. The first floor has three bedrooms and shower room. Outside has decent sized private corner plot garden and driveway for 2 cars.

- Victorian Semi Detached House
- Three Bedrooms
- Lounge
- Dining Room
- Corner Plot Garden
- Driveway
- Close to Shops & Amenities
- Close to Prospect Park



TOTAL FLOOR AREA: 951 sq.ft. (88.4 sq.m.) approx.

Whilst every attempt has been made to ensure the accuracy of the floorplan contained here, measurements of doors, windows, rooms and any other items are approximate and no responsibility is taken for any error, omission or mis-statement. This plan is for illustrative purposes only and should be used as such by any prospective purchaser. The services, systems and appliances shown have not been tested and no guarantee as to their operability or efficiency can be given.

Made with Metronix ©2024

C