



Mount House Road,
Formby, L37 3LB

Offers Over £325,000

SM

STEPHANIE MACNAB
ESTATE AGENT

An opportunity that will appeal to various buyers, whether you are looking to renovate the DETACHED BUNGALOW or transform it into a MODERN DETACHED HOUSE.

The overall site is 0.18 acre with a FREEHOLD title.

The property is DOUBLE FRONTED, and the internal floor area is approximately 900 sq ft. You will be greeted in the entrance hall with bedrooms on either side. The main bedroom has an EN-SUITE. The lounge overlooking the rear garden and the sitting room is adjacent. There is a kitchen and bathroom.

There is ample OFF-ROAD parking outside, and you could create a carriage driveway. The rear garden is substantial, and there is a GARAGE.

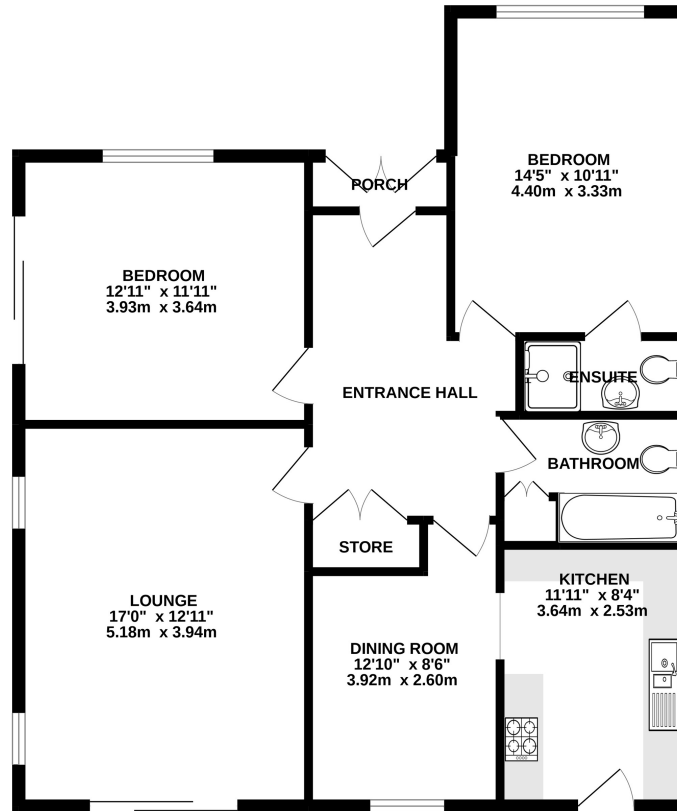
NO ONWARD CHAIN. Call to view, 01704 516 626. Follow us on Facebook and Instagram.

NB consent will be required for any alterations or extensions.





GROUND FLOOR
927 sq.ft. (86.2 sq.m.) approx.



TOTAL FLOOR AREA : 927 sq.ft. (86.2 sq.m.) approx.

Whilst every attempt has been made to ensure the accuracy of the floorplan contained here, measurements of doors, windows, rooms and any other items are approximate and no responsibility is taken for any error, omission or mis-statement. This plan is for illustrative purposes only and should be used as such by any prospective purchaser. The services, systems and appliances shown have not been tested and no guarantee as to their operability or efficiency can be given.
Made with Metropix ©2022

