

rodgers
estate agents



Brakspear Road North
Harefield, , UB9 6NU



£2,200 pcm

AVAILABLE IMMEDIATELY. A delightful mews cottage situated on the edge of Harefield Village and close to the open countryside. The property has been recently redecorated and is in lovely condition throughout. The accommodation on the ground floor comprises of a large entrance hall, cloakroom, lounge with double doors to the rear garden, dining room / study/ third bedroom and good size fitted kitchen with breakfast area. On the first floor there are two double bedrooms and a bathroom. There is no allocated parking to the front of the property and a delightful garden to the rear. Unfurnished.

Entrance Hall

Front door. Wooden flooring. Stairs leading to first floor. Cupboard.

Cloakroom

Partly tiled with a wash hand basin with mixer tap and w.c. Tiled flooring. Radiator.

Living Room

15'11" x 12'0" (4.84m x 3.67m) Three wall light points. Wooden flooring. Double doors with double glazed glass insets leading to rear garden. Radiator. Double glazed window over looking rear aspect.

Kitchen breakfast room

15'7" x 8'7" (4.76m x 2.61m) Partly tiled with wall and base units. Fitted oven and grill. Fridge freezer. Four ring gas hob with extractor hood over. Worksurfaces with tiled splashback. Washing machine. Dishwasher. One and half bowl stainless steel sink unit with mixer tap and drainer. Double doors with double glazed glass insets leading to rear garden. Double glazed window facing front aspect.

Bedroom

13'1" x 9'07" (4.0m x 2.92m) Wooden flooring. Radiator. Double glazed window overlooking front aspect.

First floor

Landing

Bedroom

15'3" x 11'10" (4.65 x 3.60m) Built in wardrobe. Radiator. Double glazed window over looking front aspect.

Bedroom

13'0" x 12'11" (3.69m x 3.68m) Radiator. Double glazed window overlooking front aspect.

Bathroom

Fully tiled with a white suite
Incorporating bath, wash hand basin
with mixer tap and w.c. Cupboard with
mirrored front. Eaves. Radiator. Double
glazed window over looking front
aspect.

Outside

Rear garden

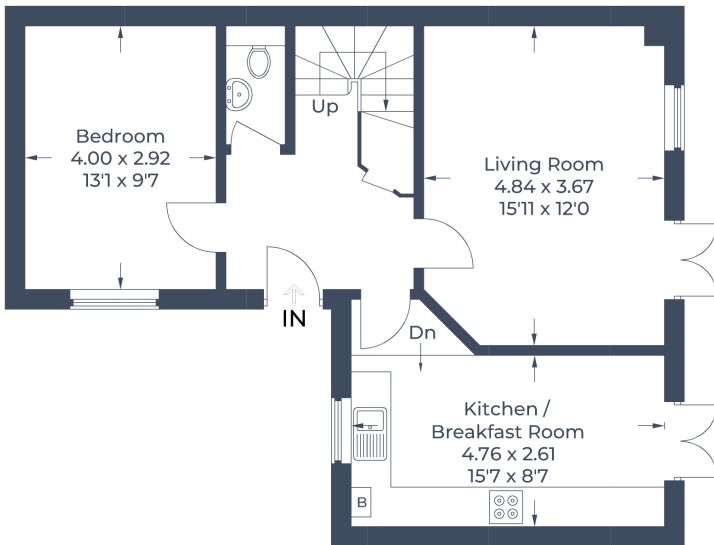
Paved patio. Steps leading to lawn area.
Flower bed. Garden shed. Wooden
fence boundary with a door leading to
side access..



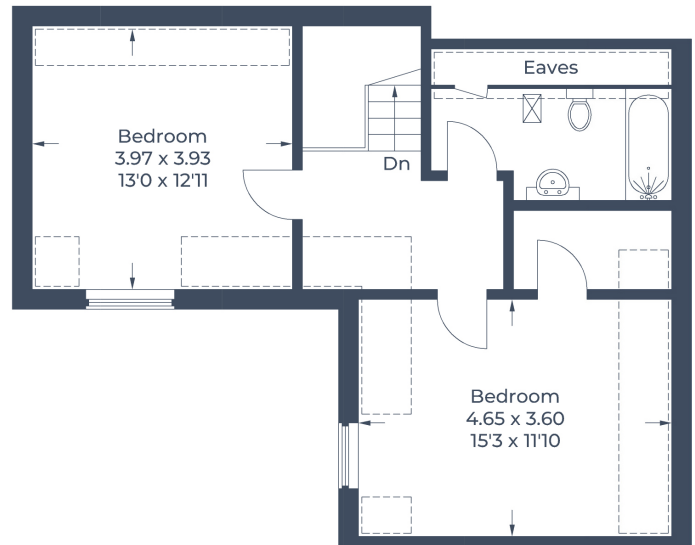
Approximate Gross Internal Area
Ground Floor = 56.4 sq m / 607 sq ft
First Floor = 55.3 sq m / 595 sq ft
Total = 111.7 sq m / 1,202 sq ft



 = Reduced headroom below 1.5m / 5'0"



Ground Floor



First Floor

Illustration for identification purposes only,
measurements are approximate, not to scale.
© CJ Property Marketing Produced for Rodgers Estate Agents



Important Notice: Rodgers Estate Agents give notice that their solicitors and any joint agents give notice that:

1. They are not authorised to make or give any representations or warranties in relation to the property either here or elsewhere, either on their own behalf or on behalf of their client or otherwise. They assume no responsibility for any statement that may be made in these particulars. These particulars do not form any part of any offer or contract and must not be relied upon as statements or representation of fact.

2. Any areas, measurements or distances are approximate. The text, photographs and plans are for guidance only and are not necessarily comprehensive. It should not be assumed that the property has all necessary planning, building regulation or other consents and Rodgers Estate Agents have not tested any appliances, equipment or facilities. Purchasers must satisfy themselves by inspection or otherwise.

30 Market Place
Chalfont St Peter
Buckinghamshire
SL9 9DU

csp@rodgersstates.com

5 Park Lane
Harefield
Middlesex
UB9 6BJ

harefield@rodgersstates.com

For further information or an appointment to view please call: Harefield 01895 823333 Market Place 01753 880333