



## **BESSEMER PLACE, GREENWICH, LONDON SE10 OGP**

**£470,000**

Stunning 7th Floor Riverside Apartment – Chain Free

This fantastic seventh floor apartment, set within the sought-after Bessemer Place development, offers bright and spacious riverside living and is being sold chain-free.

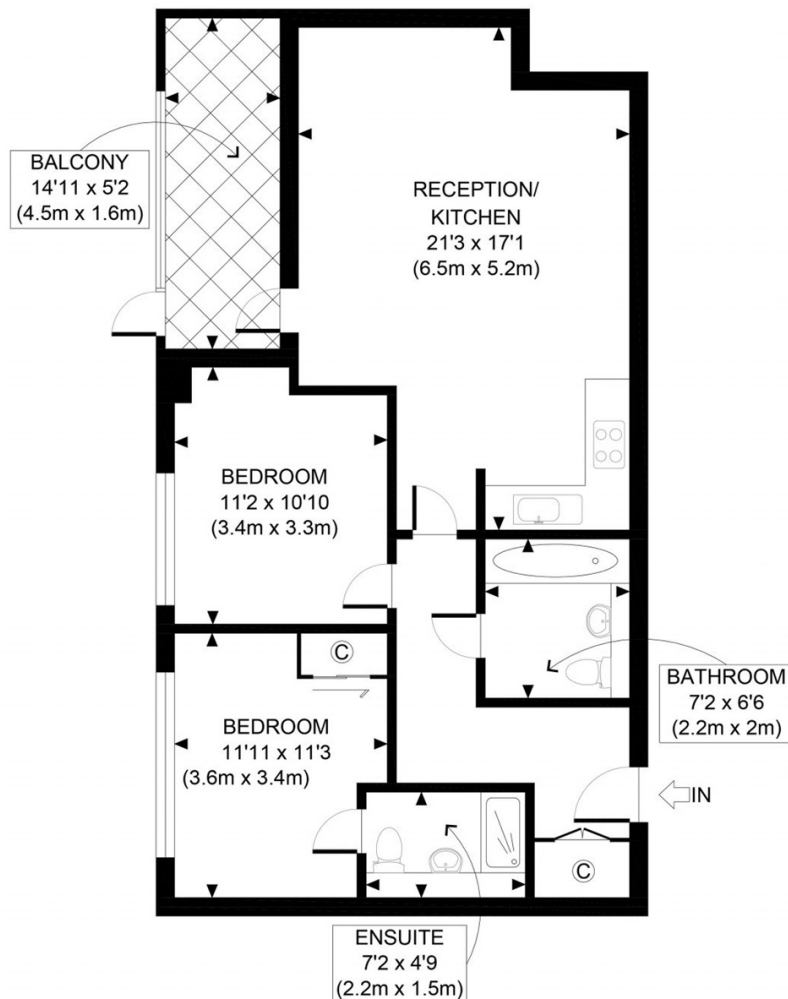
Thoughtfully designed throughout, the apartment features a generous reception area that flows seamlessly into a sleek, modern kitchen complete with integrated appliances. There are two well proportioned double bedrooms, two stylish bathrooms (including one en suite), and a private enclosed balcony offering a peaceful outdoor retreat.

Additional benefits include an allocated parking space, concierge services, access to a residents only gym, and beautifully maintained communal roof terraces boasting panoramic views of the London skyline.

**VIEWING BY APPOINTMENT WITH 1ST AVENUE. CALL: 020 8293 8600**

**63, 17 BESSEMER PLACE,  
GREENWICH, LONDON  
SE10 0GP**

**£470,000**



FIRST FLOOR  
GROSS INTERNAL  
FLOOR AREA 704 SQ FT

APPROX. GROSS INTERNAL FLOOR AREA 704 SQ FT / 65 SQM

Ref:

Copyright **photoplan** 

Disclaimer: Floor plan measurements are approximate and are for illustrative purposes only. While we do not doubt the floor plan accuracy and completeness, you or your advisors should conduct a careful, independent investigation of the property in respect of monetary valuation

**VIEWING BY APPOINTMENT  
WITH 1ST AVENUE.**

**CALL: 020 8293 8600**

**1stavenue**  
Real Estate Services