



Two Bedroom Bungalow  
Lower Woodlands Road, Gillingham, Kent, ME7 2TR

Offers In Excess Of £400,000  
Freehold

## Lower Woodlands Road, Gillingham, Kent, ME7 2TR

Offers In Excess Of £400,000

Freehold

### Description

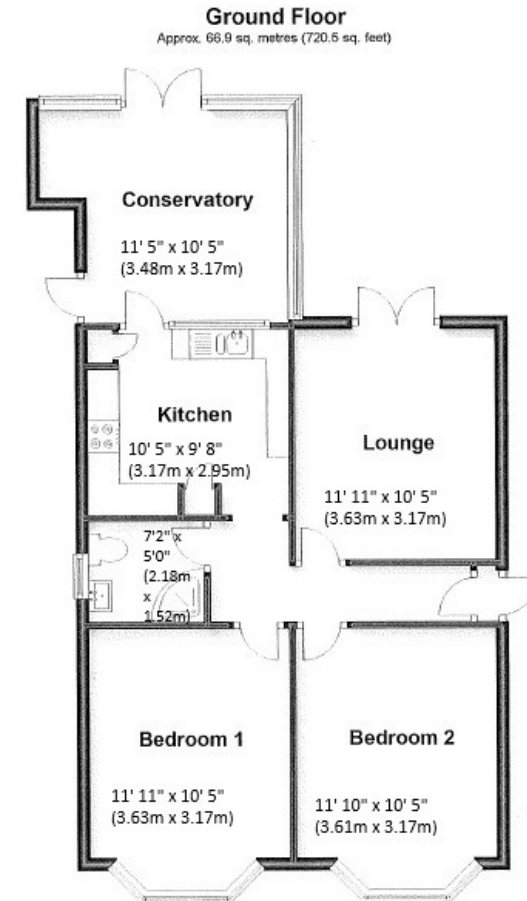
Nestled in a sought-after location with excellent access to local amenities and transport links, this spacious detached bungalow offers comfortable, versatile living with a host of appealing features. The property boasts two generously sized double bedrooms, each with attractive bay windows that flood the rooms with natural light. A bright and airy lounge provides the perfect space to relax, with patio doors opening directly onto the garden, seamlessly blending indoor and outdoor living and boasts underfloor heating. The well-equipped kitchen is both practical and stylish and includes an integrated fridge/freezer, dishwasher and washing machine, while the sunny conservatory at the rear of the home enjoys lovely views over the garden—ideal for enjoying a morning coffee or a peaceful afternoon. The rear garden is a real highlight: generously sized and thoughtfully arranged with multiple seating areas, perfect for entertaining or unwinding and with handy sheds for storage. The solar panels are owned outright and provide an income meaning your making money when the sun shines. With a bus stop just moments away and all essentials within easy reach, this delightful bungalow is not to be missed, so call the Greyfox sales team in Rainham to arrange your viewing now!

### Key Features

- Two Bedroom Detached Bungalow
- Excellent Condition & Ready to Move In
- Conservatory Overlooking The Rear Garden
- Driveway For Multiple Vehicles
- Potential To Extend (STRPP)
- Good Location For Transport Links, Bus Route & Amenities
- Modern Family Shower Room
- Established Rear Garden Measuring approx. 62ft x 28ft

### Local Area

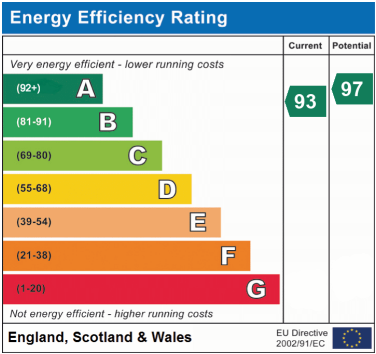
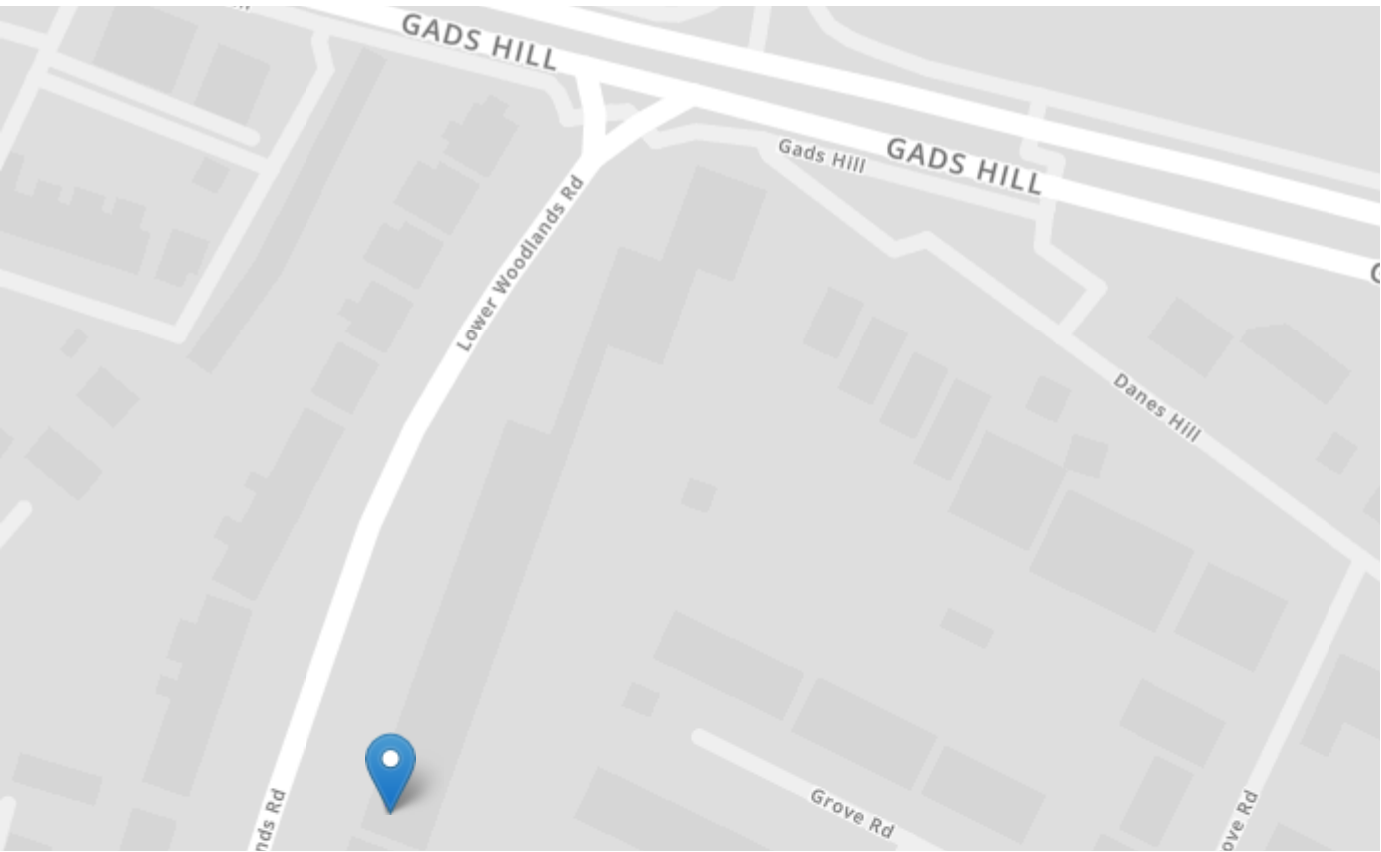
Gillingham is located within the Medway towns and offers railway links to central London and Ebbsfleet International and road connections to the A2/M2, M25 and M20. In addition to its town centre Gillingham offers a host of amenities





## Property Location

Lower Woodlands Road, Gillingham, Kent, ME7 2TR



Tenure	Freehold
Lease Term	N/A
Ground Rent	N/A
Service Charge	N/A
Local Authority	Medway
Council Tax	Band D

## Greyfox Walderslade

Unit 2, Thetford House  
Walderslade Village Centre  
Walderslade Road  
Chatham  
Kent  
ME5 9LR  
Tel: 01634 672227 Email:  
walderslade@greyfox.co.uk

## Greyfox Rainham

67C High Street  
Rainham  
Kent  
ME8 7HS  
Tel: 01634 377737 Email:  
rainham@greyfox.co.uk

**Agent Notes**  
These particulars are prepared as a general guide to a broad description of the property and should not be relied upon as a statement or representation of fact and do not constitute part of an offer or contract. The seller does not make or give nor do our employees or Greyfox have authority to make or give any representation or warranty to the property. We have not carried out a structural survey and the services, appliances and specific fittings have not been tested. All photographs, measurements, floorplans and distances referred to are given as a guide only and should not be relied upon for the purchase of carpets or any other fixtures or fittings. Lease details, service charges and ground rent (where applicable) and council tax are given as a guide only and should be checked and confirmed by you on inspection and your solicitor prior to exchange of contracts. If there are any points of particular importance to you we will be pleased to check the information for you and to confirm that the property remains available. This is particularly important should you be travelling some distance to view and where statements have been made by us to the effect that the information has not been verified. The copyright of all details, photographs and floorplans remain exclusive to Greyfox. For details of our privacy policy and referral fee arrangements with any of our selected partner companies please visit <https://www.greyfox.co.uk/legal/privacy> and <https://www.greyfox.co.uk/referral-fees>.