



MAXWELLS



16 Allens Orchard, Chipping Warden, Banbury, Northamptonshire. OX17 1LX
Guide Price £525,000 - Freehold



PROPERTY DESCRIPTION

The property is set back from the road on a quiet residential cul de sac with a large driveway and large front garden. There is side access and a lovely composite front door opening into a generous hallway providing access to all accommodation. The sitting / dining room is a large space providing plenty of room for sofas and cabinets plus large windows to the front and back providing plenty of natural light in the sitting area along with a lovely dining area with large glazed sliding doors leading to the garden.

The kitchen / family room is the heart of this wonderful home and is a fantastic place to spend time with it's vaulted ceiling and seven different windows allowing a flood of natural light into the space. The kitchen area is fitted with a range of attractive cabinets and worktops along with a selection of fitted appliances. There is plenty of space for a dining or breakfast table plus sofas to sit back and relax plus a glazed door leading out to the garden.

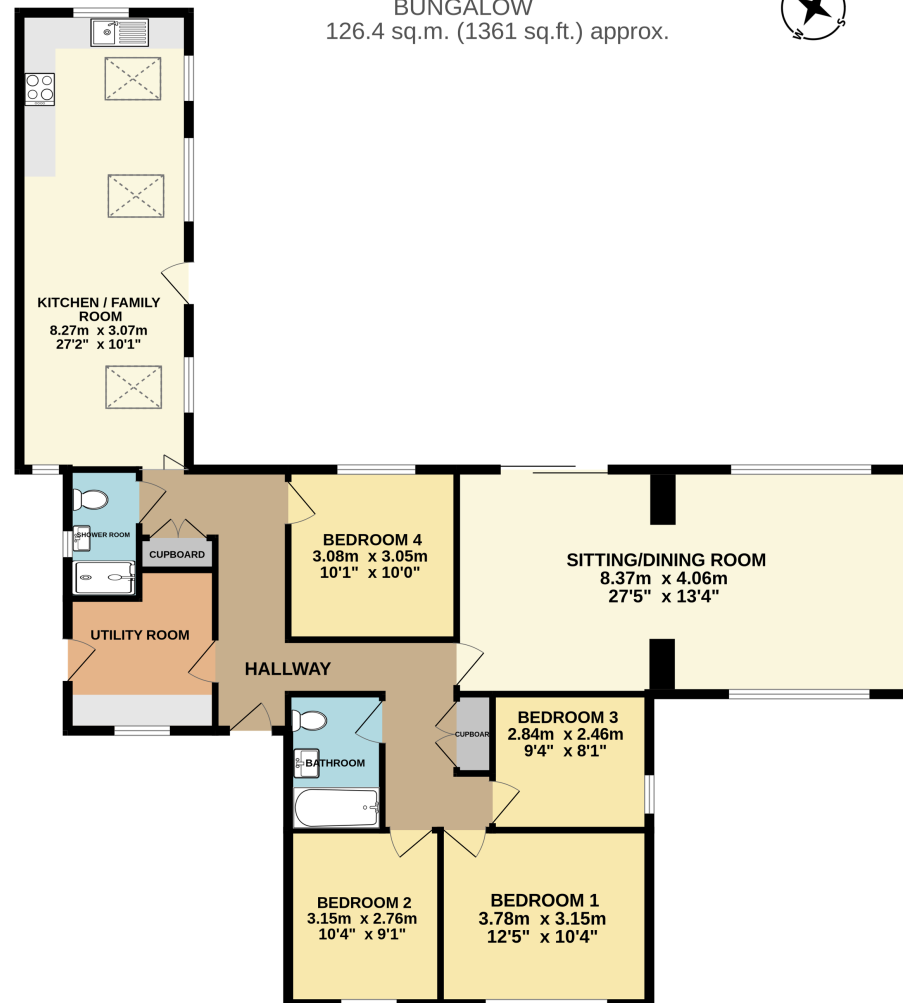
There are four double bedrooms off the hallway all with large windows, a shower room and bathroom plus a large utility room with space and plumbing for a washing machine and tumble dryer.

The rear garden is a great size with a large, paved patio area just outside the kitchen which is perfect for enjoying long summer days with the family or just reading a book. The garden itself is laid mainly to lawn with the borders laid to a variety of attractive flowers and shrubs plus a mature apple tree with all of this being enclosed by a beautiful stone wall.

POINTS OF INTEREST

- 27' Kitchen / Family Room with Vaulted Ceiling
- Four Double Bedrooms
- 27' Sitting/Dining Room
- Good Sized Rear Garden
- Utility Room
- Shower Room
- Large Driveway
- Bathroom
- Gas Central Heating
- Double Glazed

BUNGALOW 126.4 sq.m. (1361 sq.ft.) approx.



TOTAL FLOOR AREA : 126.4 sq.m. (1361 sq.ft.) approx.

Whilst every attempt has been made to ensure the accuracy of the floor plan contained here, measurements of doors, windows, rooms and any other items are approximate and no responsibility is taken for any error, omission or mis-statement. This plan is for illustrative purposes only and should be used as such by any prospective purchaser.
Made with Metropix ©2026