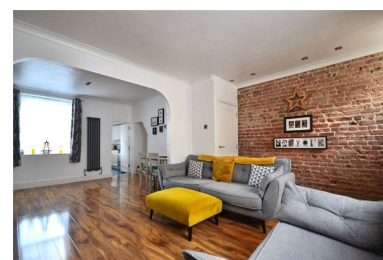
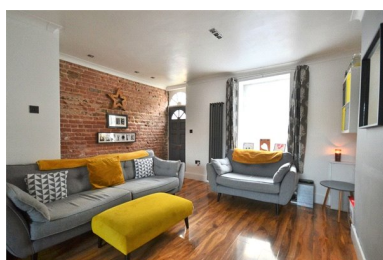
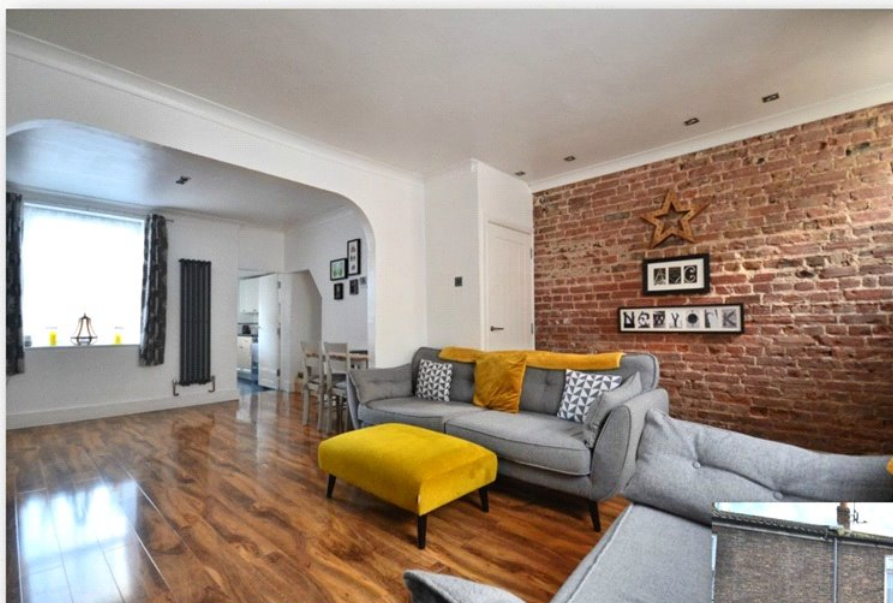


CHECKER STREET | KING'S LYNN | NORFOLK



PRICE £154,995

An extremely well presented two bedroom terrace house situated in the Friars area of King's Lynn. The accommodation comprises lounge diner, kitchen, utility room, two bedrooms and family bathroom. The property further benefits from a wood burning stove, gas central heating and low maintenance rear garden. A full range of amenities can be found within walking distance including a main line rail link into Cambridge and London King's Cross.

ACCOMMODATION

LOUNGE DINER 21' 7" x 14' 6" (6.58m x 4.42m) Wooden entrance door to front, double glazed window to front and rear , two designer radiators, wood burning stove, laminate flooring, exposed brick feature wall and door to stairway.

KITCHEN 9' 11" x 6' 1" (3.02m x 1.85m) Double glazed door and window to side, fitted kitchen with matching wall and base units, stainless steel single bowl single drainer sink, space for cooker with extractor above and tiled flooring.

UTILITY ROOM 10' 9" x 6' 3" (3.28m x 1.91m) Double glazed window to rear, radiator, tiled flooring and work surface with space for washing machine, tumble dryer and fridge freezer.

LANDING Brick feature wall, access to loft hatch, radiator and fitted carpet.

BEDROOM ONE 12' 1" x 13' 6" (3.68m x 4.11m) Double glazed window to front, built in wardrobes, radiator and fitted carpet.

BEDROOM TWO 10' x 9' 1" (3.05m x 2.77m) Double glazed window to rear, storage cupboard, radiator and original wooden floorboards.

BATHROOM 9' 9" x 6' 9" (2.97m x 2.06m) Double glazed window to side, panel bath with shower attachment, low flush w/c, pedestal wash hand basin with vanity unit, radiator and vinyl flooring.

GARDEN Enclosed rear garden mainly laid out paving with flower and shrub borders. To the rear of the garden is space for two storage sheds.

EPC RATING D

