



## Stotfold Road

Arlesey | Bedfordshire | SG15 6XR

[www.stonegate-estates.co.uk](http://www.stonegate-estates.co.uk)





# STOTFOLD ROAD

## Property Description

We are delighted to offer for sale this well presented and much improved five bedroomed detached family home.

Situated within a village location and within an easy walk to the train station, this spacious home has numerous benefits which include a refitted quality kitchen with appliances, five bedrooms of which four are double, two ensuite shower rooms, two family bathrooms and a double garage with ample off road parking.

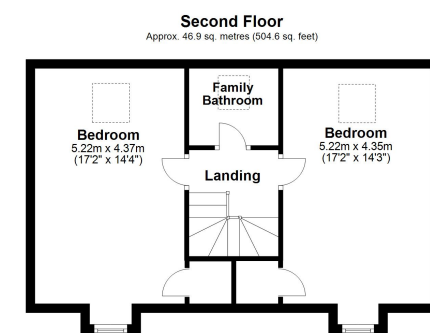
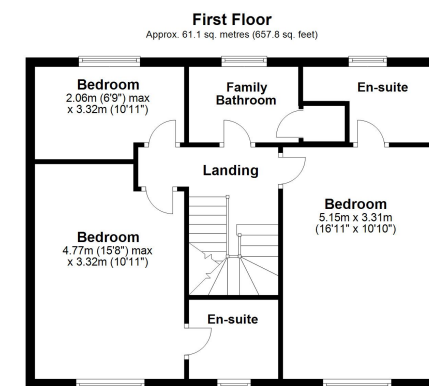
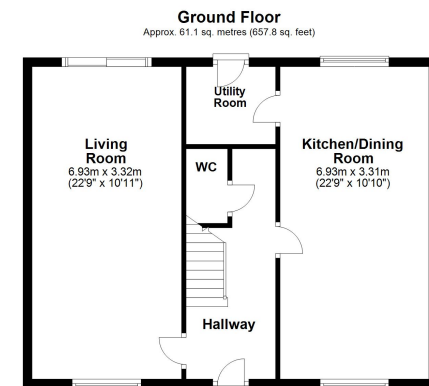
There is a useful utility room with a separate cloakroom, an enclosed rear garden, gas fired central heating, sola panels and no upper chain.

Arlesey is a small town in the district of in Bedfordshire. It is located near the border with Hertfordshire, about three miles north-west of Letchworth and four miles north of Hitchin. Arlesey railway station provides train services to London, Peterborough and Stevenage. Arlesey Town Football Club has their ground to the south of the town.

**£625,000 Freehold**







Total area: approx. 169.1 sq. metres (1820.2 sq. feet)  
All measurements shown are approximate and for guidance only. Garages and workshops are not included in any gross floor areas unless integral to the main building where they will be included.  
Plan produced using PlanItUp.





- Five Bedrooms (2 with En-Suite)
- Double Garage
- Ample Off Road Parking
- Enclosed Rear Garden
- Cloakroom and Utility room
- Walking distance to Train Station
- Village Location
- Refitted Kitchen & Utility

EPC Rating: B

Stonegate Estate Agents

01462 438979

[sales@stonegate-estates.co.uk](mailto:sales@stonegate-estates.co.uk) | [www.stonegate-estates.co.uk](http://www.stonegate-estates.co.uk)

