

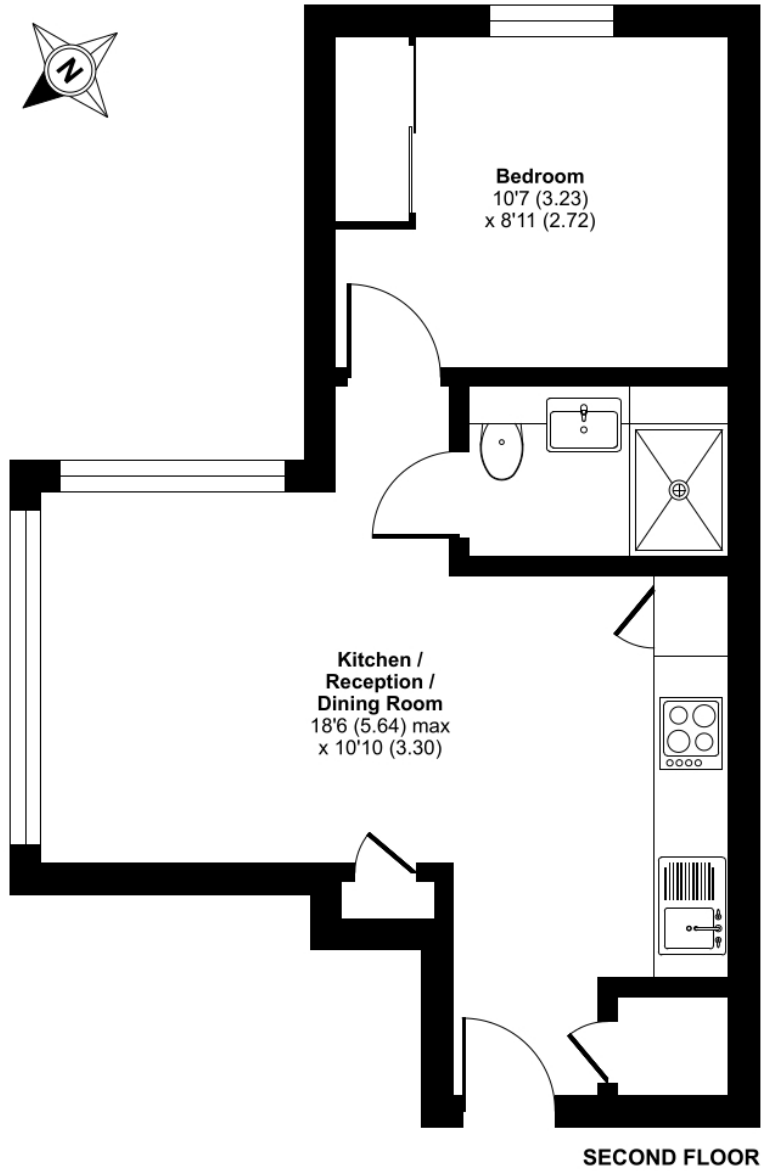


Wraysbury House, London Road, Staines-upon-Thames, Surrey, TW18 4BP

STUNNING ONE BEDROOM APARTMENT IN THIS NEWLY CONSTRUCTED DEVELOPMENT IDEALLY LOCATED IN THE HEART OF STAINES TOWN CENTRE WITHIN MOMENTS OF MAINLINE TRAIN STATION, HIGH STREET SHOPS & RESTAURANTS AND WITH EASY ACCESS TO HEATHROW AIRPORT & LOCAL MOTORWAY NETWORKS. The property benefits from a spacious lounge open to luxury fitted kitchen, double bedroom, modern white shower room, allocated parking and a very long lease. No Onward Chain. Viewings Highly Recommended!

ROOM DESCRIPTIONS

FLOORPLAN



127a, High Street, Staines-upon-Thames, TW18 4PD

01784 451458

staines@gregory-brown.co.uk