

84b Swift Close, Letchworth Garden City, Hertfordshire, SG6 4LQ

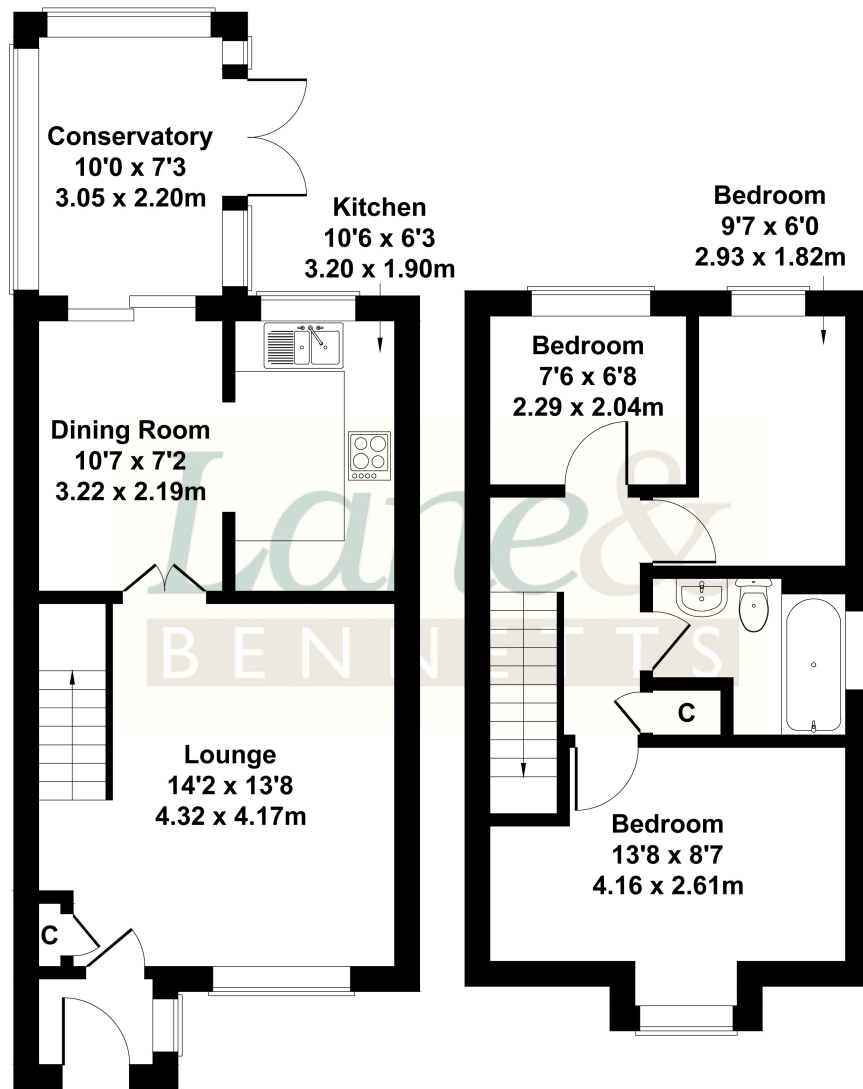
£315,000

Lane & Bennetts are pleased to offer this three bedroom family home situated in a quiet cul-de-sac location close to countryside. The ground floor to the property offers a good sized lounge room, a fitted kitchen opening onto breakfast room and a handy conservatory / additional reception area. To the first floor there is a double bedroom, two single bedrooms and a modern family bathroom. To the rear of the property there is a garage (suitable for part conversion for a myriad of uses STP) with parking space in front. This family home is on the doorstep of a 'GOOD' Ofsted rated JMI school is just a short walking distance to the much-loved Standalone Farm and just a short walk to local shops and amenities while only a 20 minute walk to the station & town.



84b Swift Close

Approximate Gross Internal Area
807 sq ft - 75 sq m



GROUND FLOOR

FIRST FLOOR

Not to Scale. Produced by The Plan Portal 2023
For Illustrative Purposes Only.

- THREE BEDROOM FAMILY HOME
- CHAIN FREE
- FITTED KITCHEN
- KITCHEN OPENING TO DINING ROOM
- CONSERVATORY
- MODERN BATHROOM
- GARAGE & OFF-ROAD PARKING
- 20 MINUTE WALK TO STATION & TOWN
- Tenure: FREEDHOLD | EPC: C | Council Tax Band: C

