



Maple Road
Shaftesbury
Dorset
SP7 8FR

Offers in Excess of £299,000

bettermove

Maple Road Shaftesbury

Bettermove are proud to present this 3 bedroom detached house in Shaftesbury, available with no forward chain.

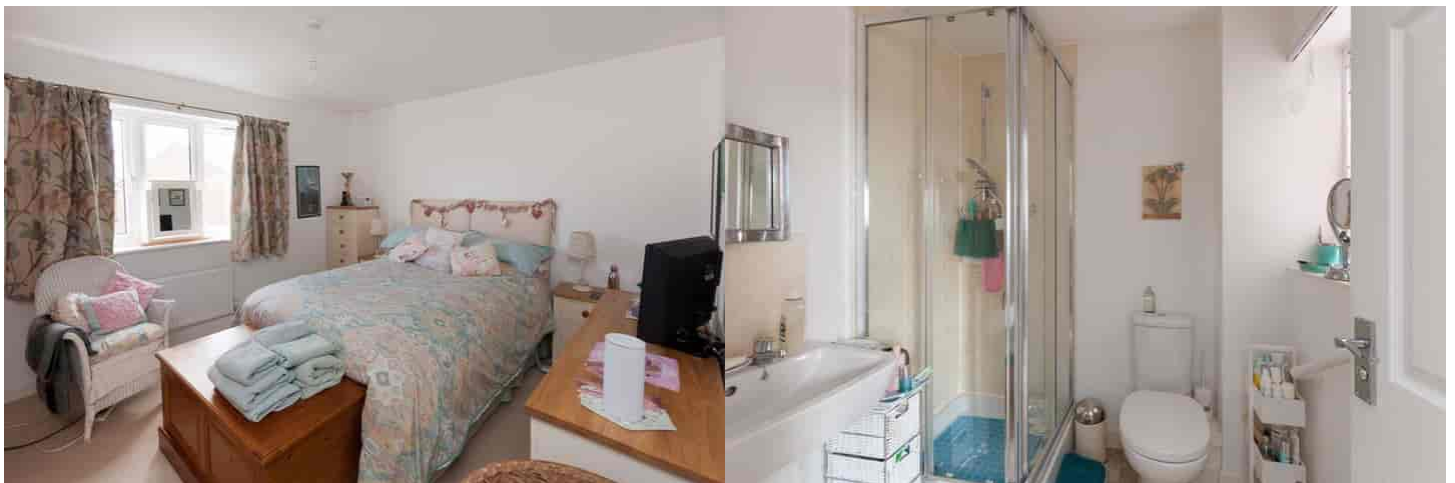
The property benefits from double glazing, gas central heating throughout and has off street parking available via the driveway and a detached garage.

The council tax band is D.

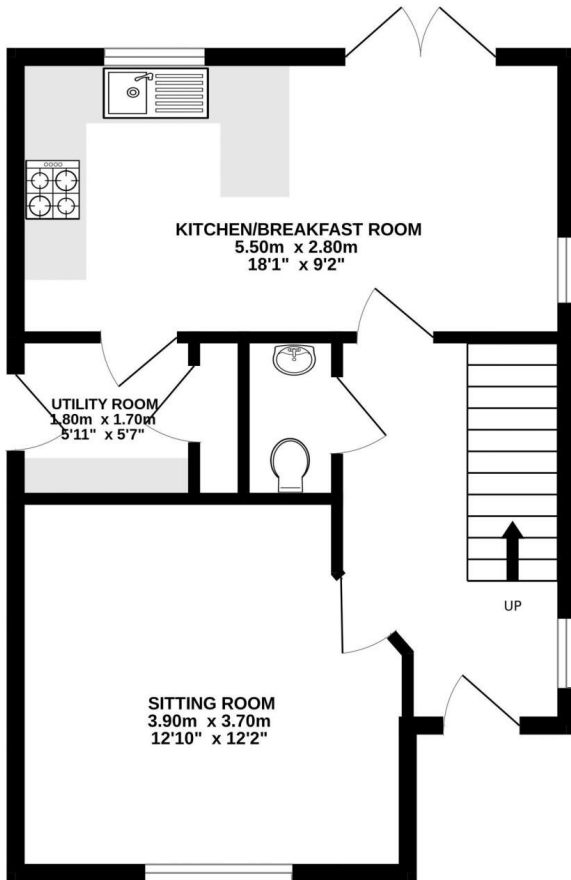
The interior of this beautifully presented property comprises a spacious living room, utility, fitted kitchen/breakfast room and WC on the ground floor. The first floor consists of 3 bedrooms, with 1 en-suite and the family bathroom. The exterior boasts a private rear garden, perfect for enjoying the summer months.

Located in the popular town of Shaftesbury, the property is close to a range of amenities, including shops, supermarkets, restaurants and pubs. Excellent transport connections can be found from Gillingham Railway Station, local bus routes and close access to the A351, leading to the M4 and Bournemouth.

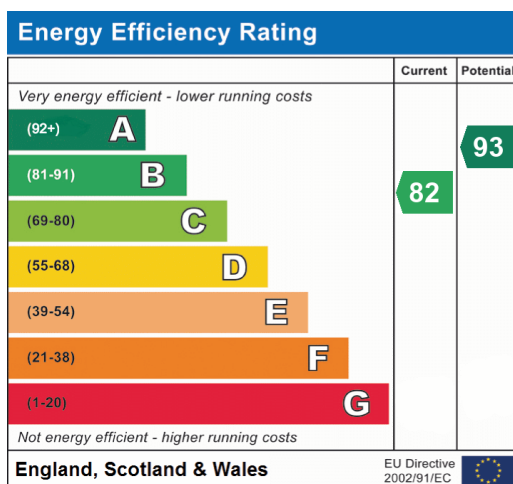
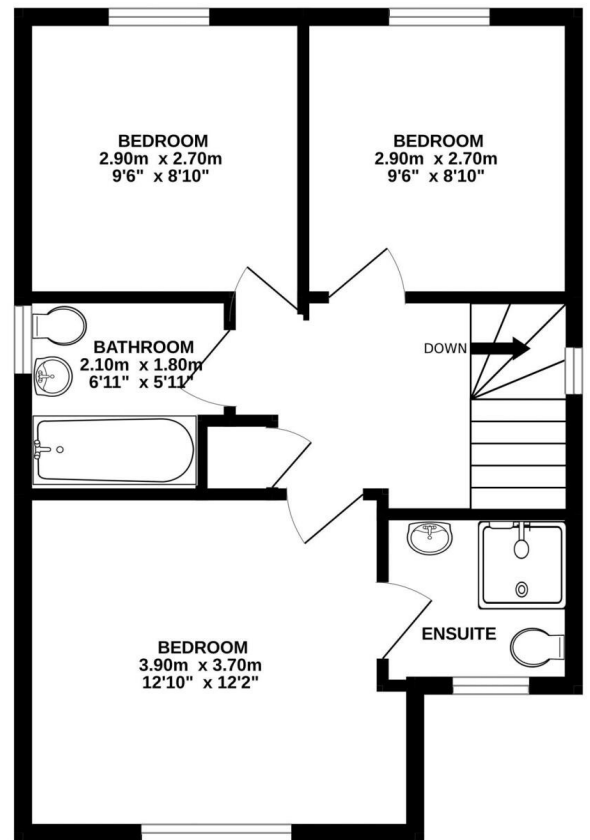
This exciting opportunity should not be missed! All enquiries can be made through Bettermove on 0330 004 0050.



GROUND FLOOR
42.4 sq.m. (456 sq.ft.) approx.



1ST FLOOR
42.4 sq.m. (456 sq.ft.) approx.





20-22 Bridge End, Leeds, LS1 4DJ
t: 0330 004 0050 e: hello@bettermove.co.uk
www.bettermove.co.uk