



GREGORY BROWN
RESIDENTIAL SALES & LETTINGS

£285,000 Freehold
FOR SALE



Windermere Close, EGHAM, TW20 8JR

WITH GARAGE | WELL PRESENTED & SPACIOUS ONE BEDROOM FREEHOLD HOUSE WITH PRIVATE GARDEN IN SOUGHT AFTER LOCATION IDEALLY POSITIONED FOR EASY ACCESS TO TOWN CENTRE & LOCAL MOTORWAY NETWORKS. The property benefits from a spacious lounge/diner, modern fitted kitchen, large double bedroom, modern white bathroom suite, large private garden and garage. No Onward Chain. Viewings Highly Recommended.

Gregory Brown

127a, High Street, Staines-upon-Thames, TW18 4PD

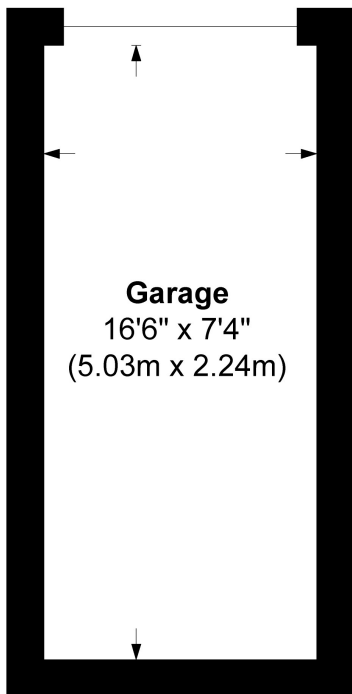
01784 451458

staines@gregory-brown.co.uk

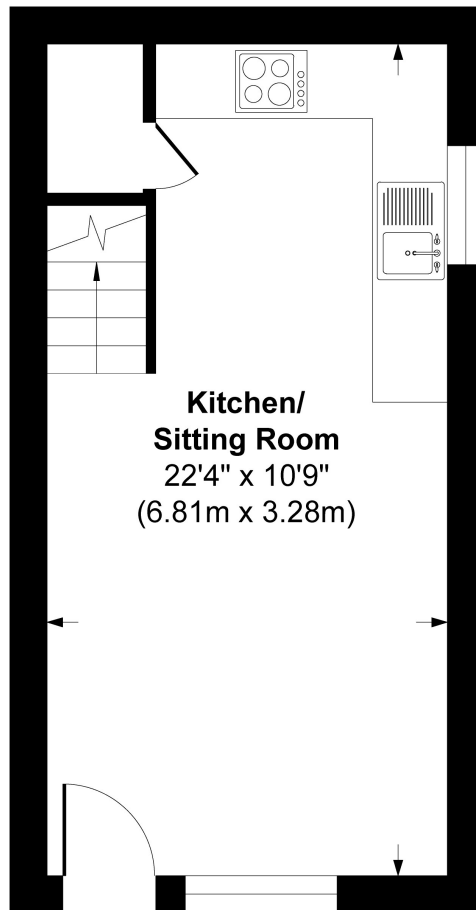
ROOM DESCRIPTIONS

FLOORPLAN

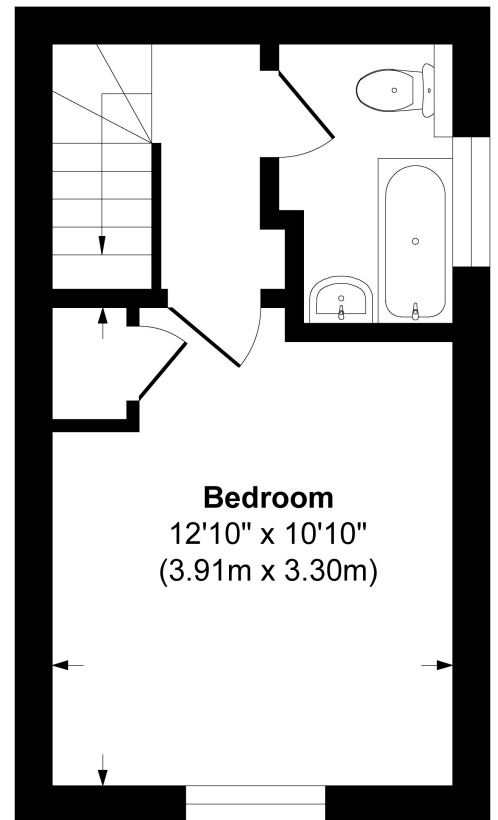
Approximate Gross Internal Area = 52.94 sq m / 570 sq ft
(Including Garage)



Garage



Ground Floor



First Floor