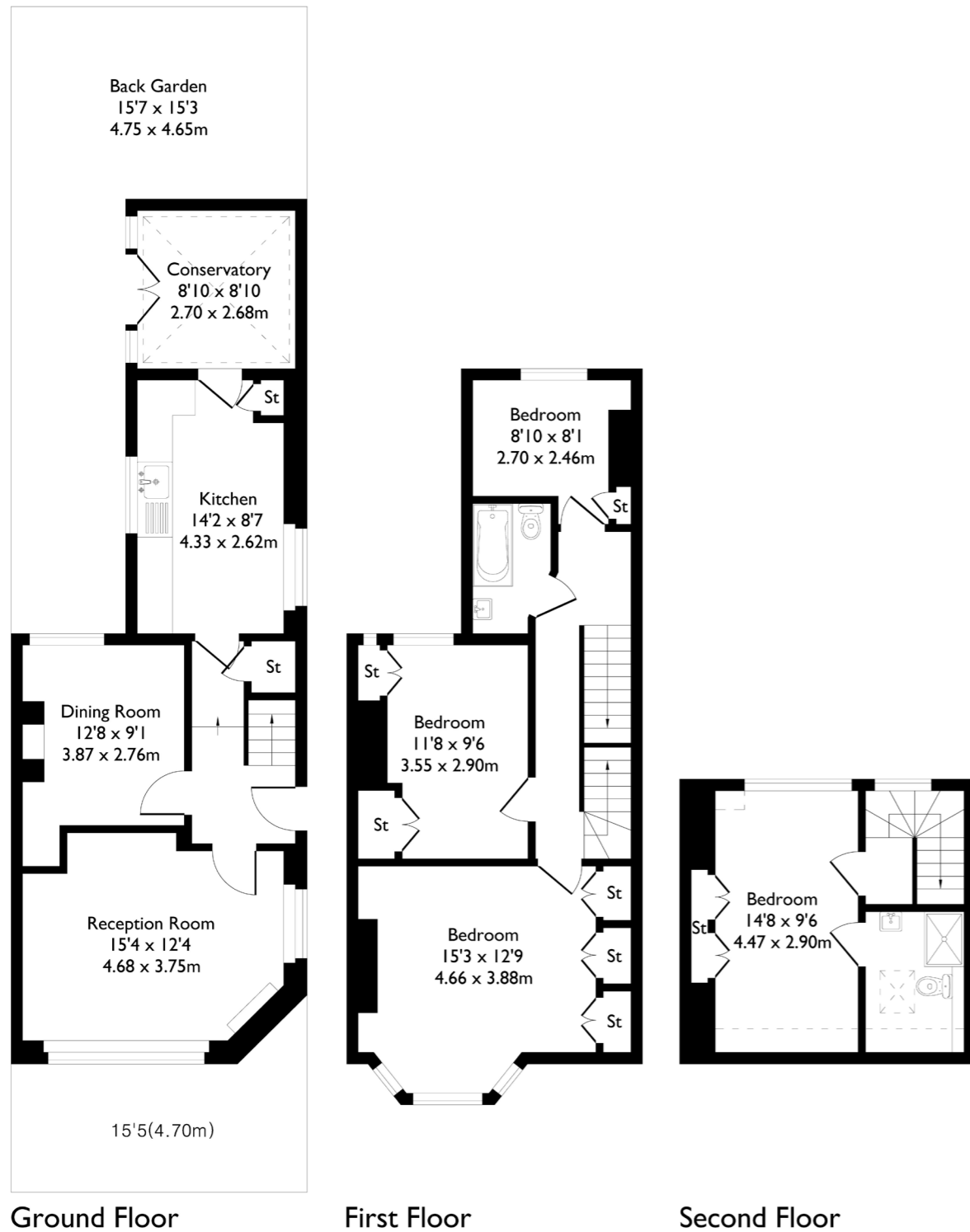


## Westfield Road, London, W13

Approximate Floor Area = 118.7 sq m / 1279 sq ft



### 4 BEDROOM HOUSE

Westfield Road, W13  
£975,000

Welcome to this four-bedroom, two-bathroom home, ideally located on the highly sought-after Westfield Road.

As you enter, you're greeted by a spacious and bright reception room to your left, followed by a second reception room—both benefiting from high ceilings and plenty of character. The kitchen leads through to a conservatory, which opens out onto a beautifully bright garden, perfect for relaxing or entertaining. Upstairs, the first floor offers two generous double bedrooms, a single bedroom, and a well-appointed family bathroom.

### FEATURES

- Four Bedrooms
- Two Bathrooms
- Two Reception Rooms
- West Ealing Station (Elizabeth Line)
- Northfields Amenities Nearby
- St John's Primary School
- EPC Rating E



4 BEDROOM HOUSE

## Westfield Road, W13

The loft has been thoughtfully converted into a superb master suite, complete with its own en-suite shower room.

The property also features a side entrance and double doors opening onto the garden. With some levelling, this space could potentially be adapted to provide off-street parking, if desired. Conveniently located, the property is just a 15-minute walk to both West Ealing and Northfields stations. You'll also find a local pub within a 5-minute walk, along with a range of amenities just moments away. EPC Rating E.

