

# THOMAS CONNOLLY

ESTATE AGENTS | LETTING AGENTS | NEW HOMES | PROPERTY MANAGEMENT

## 6 PENMON CLOSE, MONKSTON, MILTON KEYNES, MK10 9ET

For Sale | freehold | £640,000



5



3



2



tbd

### Contact us:

#### Phone:

01908 77 44 22

#### Email

Sales@tcmk.co.uk

#### Address

Thomas Connolly  
7 Rillaton Walk  
Brooklyn House  
MK9 2FZ



# Property Description

Thomas Connolly Estate Agents are delighted to offer for sale this immaculately presented five-bedroom detached family home, located in a quiet cul-de-sac within the popular Monkston area of Milton Keynes. This fantastic home offers spacious and versatile accommodation throughout, with a thoughtfully converted loft and a stylish open-plan kitchen/dining room – perfect for modern family living.

The ground floor comprises a welcoming entrance hall with access to a cloakroom, a generous sitting room with feature bay window, and a stunning reconfigured kitchen/dining room which now extends into part of the original garage to create a superb open-plan entertaining space. This contemporary kitchen/diner is beautifully fitted and opens onto the rear garden through double doors. A separate utility room and internal access to the garage – now shortened but still functional with an electric door – complete the ground floor.

To the first floor, there are four double bedrooms, including a spacious second bedroom (previously the principle) with fitted wardrobes and an en-suite bathroom. The remaining three bedrooms share access to the main family bathroom and generous landing space.

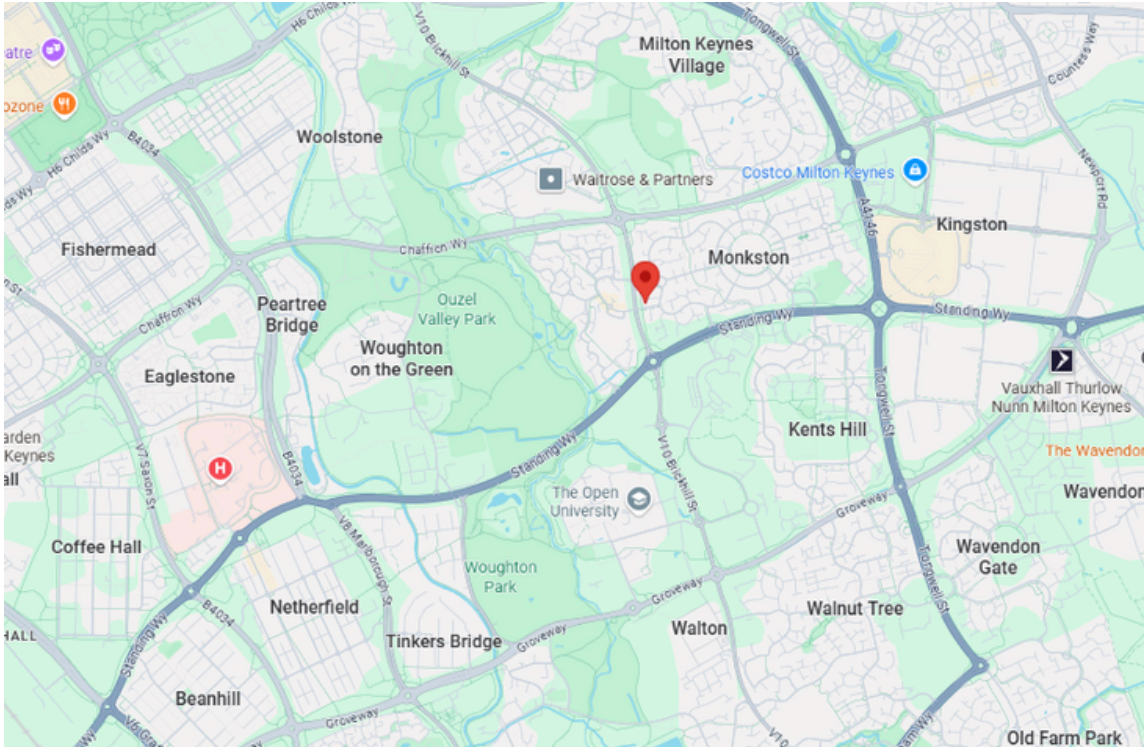
The second floor boasts a fantastic loft conversion, offering a large fifth bedroom, currently utilised as the principle bedroom with its own four piece en-suite bathroom, Juliette balcony and a dedicated dressing area.





# 6 PENMON CLOSE, MONKSTON, MILTON KEYNES, MK10 9ET

## Location



Outside, the property enjoys a landscaped rear garden with lawn and patio area, along with a driveway to the front providing off-road parking. The home further benefits from an electric garage door and two EV charging points, making it a future-ready home. Located in Monkston, the property is within easy reach of sought-after local schools, parks, amenities, and excellent transport links, including Milton Keynes Central station and the M1.



## THOMAS CONNOLLY ESTATE AGENTS

Estate Agents | Letting Agents | New Homes | Property Management

W: [thomasconnolly.co.uk](https://thomasconnolly.co.uk) | P: 01908 77 44 22 | E: [Sales@tcmk.co.uk](mailto:Sales@tcmk.co.uk)

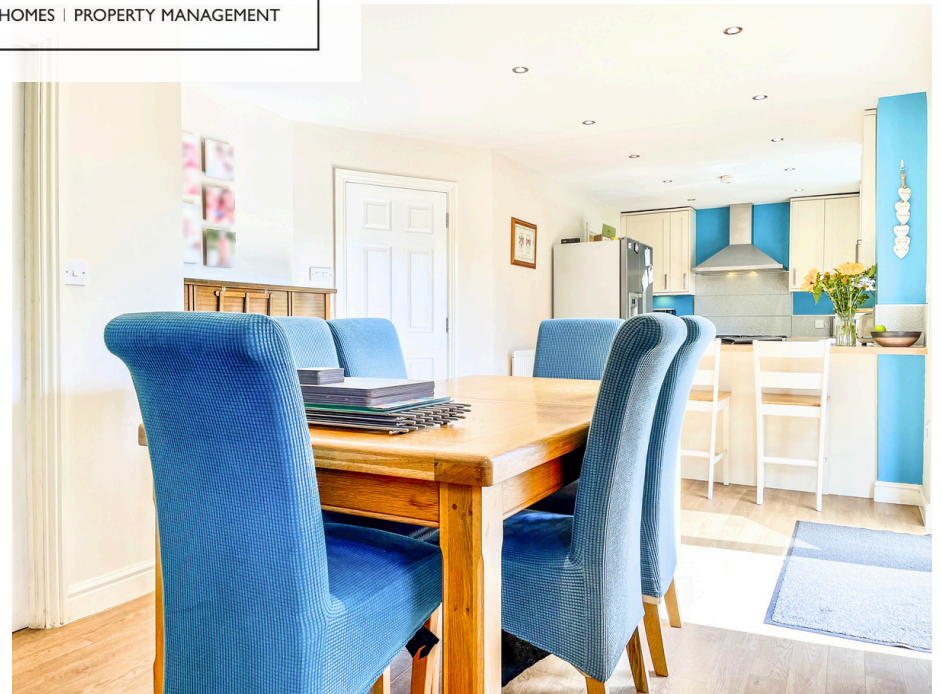






# THOMAS CONNOLLY

ESTATE AGENTS | LETTING AGENTS | NEW HOMES | PROPERTY MANAGEMENT





## Room Descriptions:

Entrance Hall  
Sitting room  
13' 1" x 15' 0" (3.99m x 4.57m)  
Cloakroom  
Kitchen/dining room  
28' 9" x 11' 6" (8.76m x 3.51m)  
Access to garage  
Utility room

First floor landing  
Fifth bedroom  
10' 0" x 9' 8" (3.05m x 2.95m)  
Third bedroom  
12' 1" x 10' 10" (3.68m x 3.30m)  
Family bathroom  
Fourth Bedroom  
12' 1" x 8' 0" (3.68m x 2.44m)  
Second bedroom  
13' 1" x 13' 1" (3.99m x 3.99m)  
Built-in Wardrobe  
En-suite

Second floor  
Principle bedroom  
12' 4" x 13' 9" (3.76m x 4.19m)  
Dressing area  
7' 8" x 13' 9" (2.34m x 4.19m)  
Four-piece en-suite

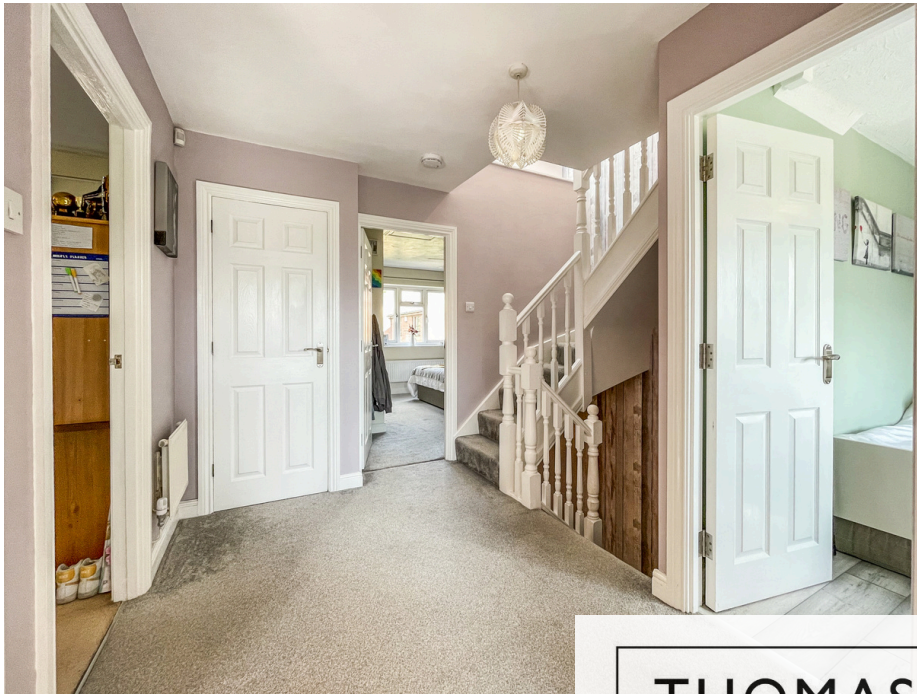
Garage  
Driveway Parking  
Private rear garden

### PLEASE NOTE:

These property particulars do not constitute part or all of an offer or contract. All measurements are stated for guidance purposes only and may be incorrect. Details of any contents mentioned are supplied for guidance only and must also be considered as potentially incorrect. Thomas Connolly Estate Agents advise perspective buyers to recheck all measurements prior to committing to any expense. We confirm we have not tested any apparatus, equipment, fixtures, fittings or services and it is within the prospective buyers interests to check the working condition of any appliances prior to exchange of contracts. Thomas Connolly Estate Agents has not sought to verify the legal title of the property and the buyers must obtain verification from their solicitor.

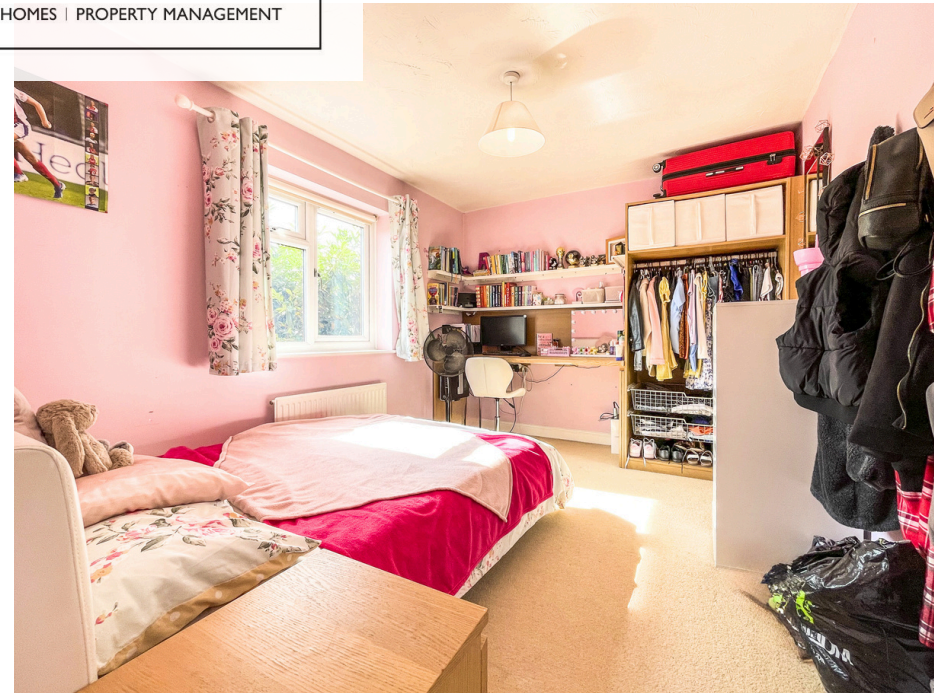






# THOMAS CONNOLLY

ESTATE AGENTS | LETTING AGENTS | NEW HOMES | PROPERTY MANAGEMENT

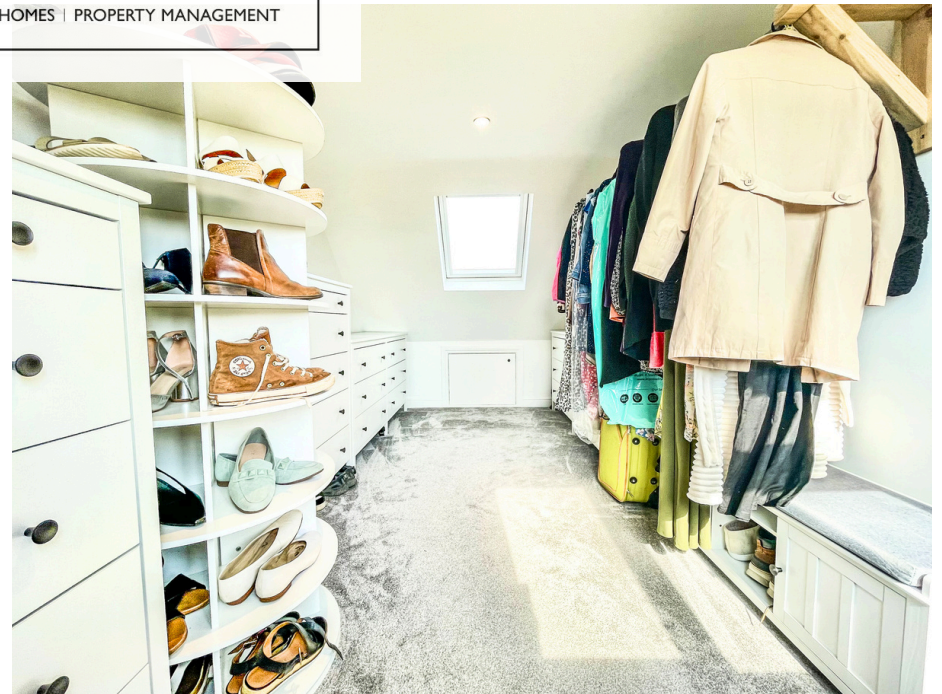






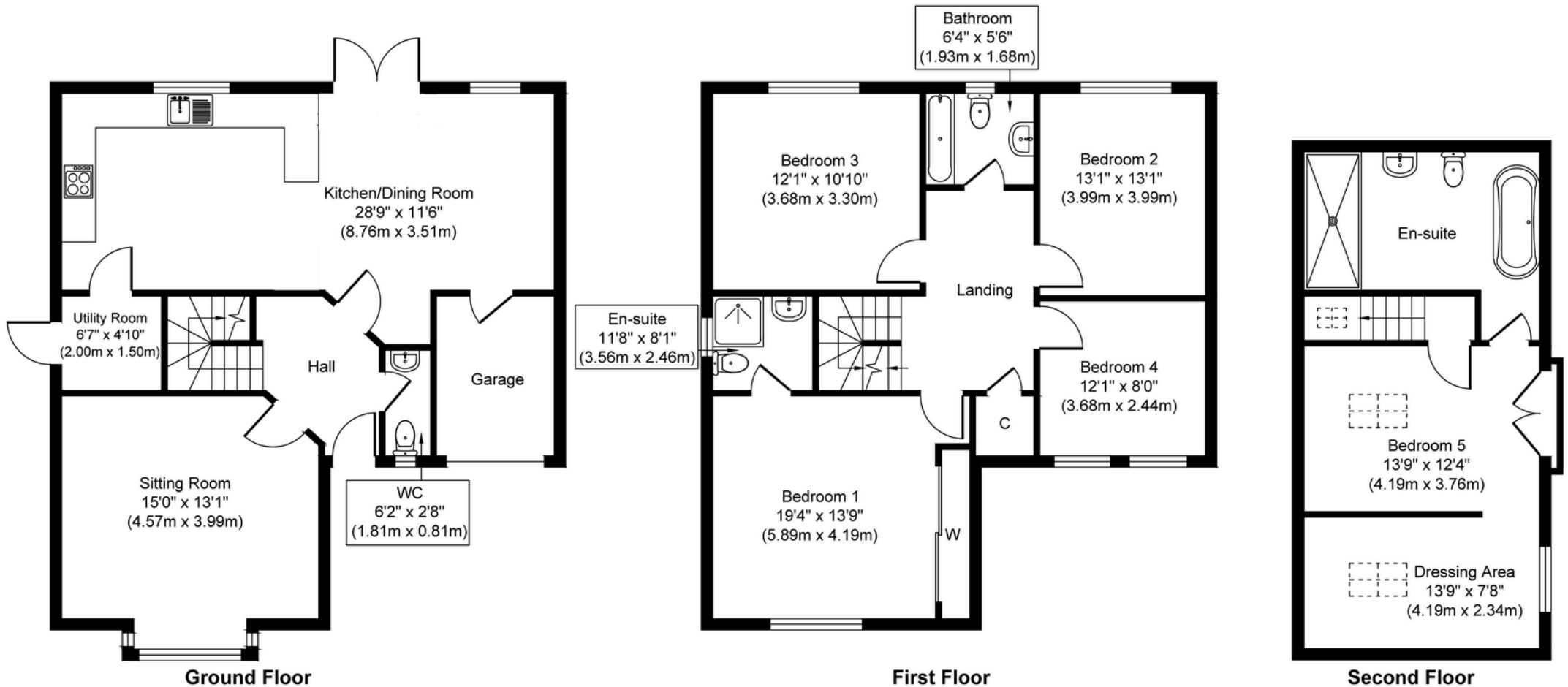
# THOMAS CONNOLLY

ESTATE AGENTS | LETTING AGENTS | NEW HOMES | PROPERTY MANAGEMENT





# THOMAS CONNOLLY



**Approx. Gross Internal Floor Area 1913 sq. ft / 177.68 sq. m**

Whilst every attempt has been made to ensure the accuracy of the floor plan contained here, measurements of doors, windows, rooms and any other items are approximate and no responsibility is taken for any error, omission, or mis-statement. This plan is for illustrative purposes only and should be used as such by any prospective purchaser or tenant. The services, systems and appliances shown have not been tested and no guarantee as to their operability or efficiency can be given.