



Farhill Close
West Bromwich
B71 3HA
£1,150 pcm



WK Property
130 Walsall Road
West Bromwich
B71 3HN
T: 0121 588 5666
W: www.wk-property.com

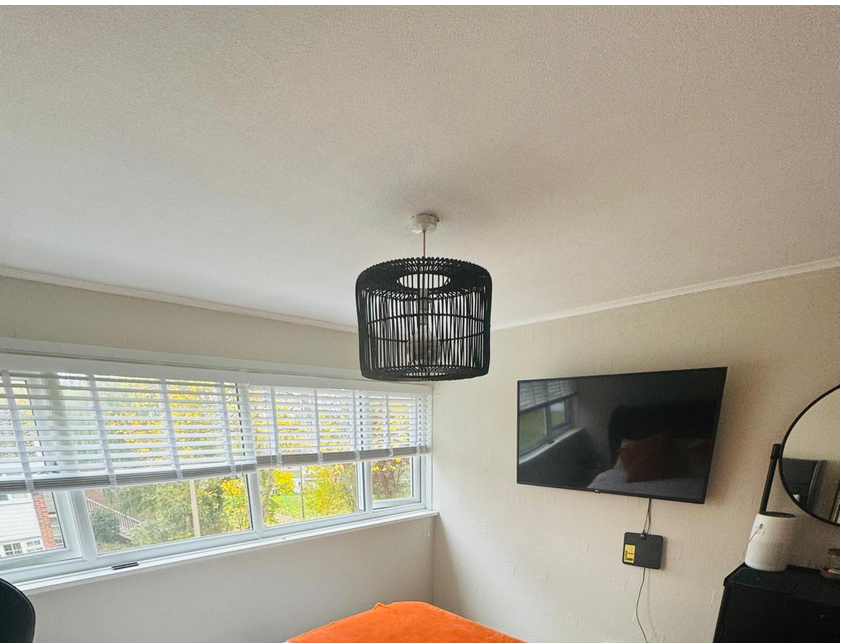




Farhill Close

West Bromwich, B71 3HA

WK Property in West Bromwich are pleased to present this very well presented three-bedroom family home located on a popular road in the Charlemont Farm area of West Bromwich. The property lends itself very well to being an excellent new home due its proximity to local amenities and commuter routes. Consisting of Porch, Hallway, Through Lounge, Storage Room, Kitchen, Three Bedrooms, Bathroom, Rear Garden, Parking to the rear.



Ground Floor

Entrance Hall

With access to the front elevation via a double-glazed door, under under-stair cupboard, radiator, stairs leading up and doors to the below.

Lounge

Having a double-glazed window to the front elevation, radiator and gas fireplace.

Kitchen/Diner

Having double-glazed patio doors to the rear elevation, a variety of wall and base units, gas cooker point, plumbing for a washing machine, stainless steel sink, tiling in splash-prone areas and radiator.

First Floor

Landing

Having an airing cupboard, loft access and doors to the below.

Bedroom 1

Having a double-glazed window to the front elevation, wardrobes and radiator.

Bedroom 2

Having a double-glazed window to the rear elevation and radiator.

Bedroom 3

Having a double-glazed window to the front elevation, wardrobes and radiator.

Showerroom

Having a wash hand basin and vanity cupboard, towel radiator, LL W.C, shower cubicle, tiling in splash-prone areas and a double-glazed window to the rear elevation.