



Dentons Green Lane, Dentons Green. Offers Over £400,000

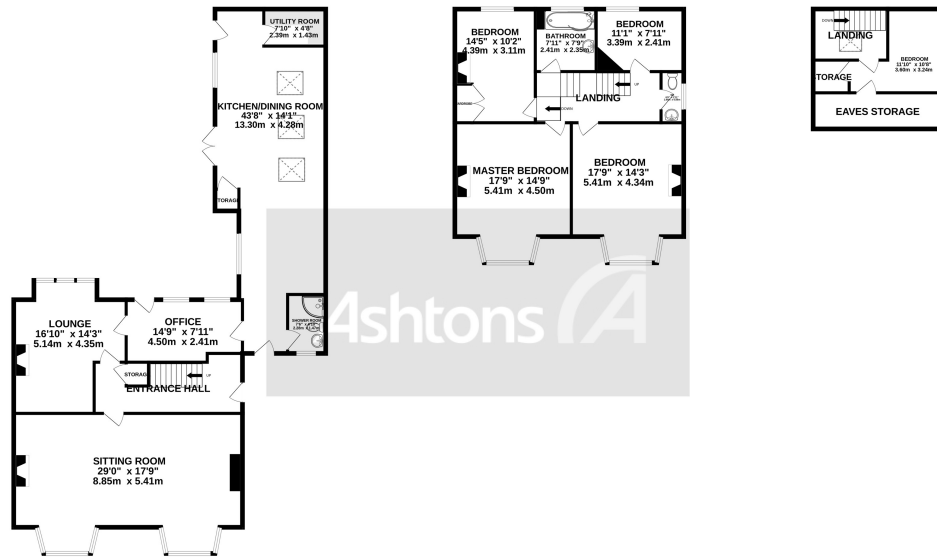
Dentons Green | Five bedrooms | Large garden to the rear | Downstairs shower room and WC |
Driveway | Victorian Bay Fronted | Council Tax - E | Leasehold | No Chain | EPC - D |



GROUND FLOOR
1428 sq ft (132.6 sq m) approx.

1ST FLOOR
856 sq ft (79.5 sq m) approx.

2ND FLOOR
249 sq ft (23.1 sq m) approx.



TOTAL FLOOR AREA : 2543 sq.ft. (236.2 sq.m.) approx.

Whilst every attempt has been made to ensure the accuracy of the floorplan contained here, measurements of doors, windows, rooms and any other items are approximate and no responsibility is taken for any error, omission or mis-statement. This plan is for illustrative purposes only and should be used as such by any prospective purchaser. The services, systems and appliances shown have not been tested and no guarantee as to their operability or efficiency can be given. Made with Metropix ©2023

If you are looking for a property that gives lots of space big rooms and big garden , then look no further. Positioned on the ever-popular Dentons Green Lane is this five-bedroom Victorian double fronted semi has been has been maintained to a high standard and property must be viewed to be fully appreciated.

The property is located close by to local amenities, shops, schools within walking distance to St Helens Town Centre and easy access to the A570 East Lancashire Road with ease of access to Liverpool and Manchester.

The accommodation is set over three floors and comprises: Entrance hallway, sitting room, large modern fitted kitchen with dining area with a utility room and shower room / WC .



Contact your local office to arrange a viewing:

- Padgate: 01925 479334
- Great Sankey: 01925 454300
- Winwick: 01925 232146
- Stockton Heath: 01925 453400
- St.Helens: 01744 754120
- Wigan: 01942 498862
- Culcheth: 01925 764744
- Ashton-In-Makerfield: 01942 364446
- Newton-Le-Willows: 01925 907770
- Commercial Office: 01925 907709
- Lettings Head Office: 01925 873533
- Financial Services: 01925 221234

Viewing Arrangements

Viewing is strictly by appointment only through Ashtons Estate Agency.

Disclaimer Property Details

These particulars, whilst being believed to be accurate are set out as a general outline only for guidance and do not constitute any part of an offer or contract. Intending purchasers should not rely on them as statements of representation of fact, but must satisfy themselves by inspection or otherwise as to their accuracy. We have not carried out a detailed survey nor tested the services, appliances and specific furnishings. The measurements given are approximate. No person in this firms employment has the authority to make or give any representation or warranty in respect of the property.

All details, photographs and floorplans are the copyright of Ashtons Estate Agency.



How much you can borrow?
Speak to a mortgage expert in your local office.

Ashtons Financial Services

Ashtons.net rightmove

PrimeLocation.com Zoopla.co.uk

