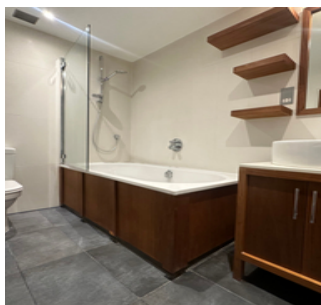




£4,000 PCM

EBURY STREET, LONDON. SW1W

- Duplex Flat
- Two Double Bedrooms
- Two Bathrooms
- Garden
- Balcony
- Close to Victoria Station
- Eat in Kitchen
- Close to Local Amenities



PROPERTY SUMMARY

A beautiful and spacious modern apartment, two bedrooms, two ensuite bathrooms and a single w/c. Part furnished, first floor duplex property including a private patio garden, Juliet balcony off the reception room, solid parquet flooring through the top floor and carpet throughout the bedrooms in the basement.

This property is located on a sought after road in Belgravia, Ebury Street, Victoria. It benefits from having the amenities of Victoria, Belgravia and Sloane Square all within walking distance. The local area offers excellent transport links and spectacular views of City of London.

Available Now.

0208 201 5454
info@cubesresidential.com