

25 Whitestone Road,

Frome, BA11 2DW

COOPER
AND
TANNER



£360,000 Freehold

An extended three-bedroom family home with a large garden, a driveway providing ample parking and a single garage within a popular part of Frome.

25 Whitestone Road, Frome, BA11 2DW

 3  2  1 EPC C

£360,000 Freehold

DESCRIPTION#

25 Whitestone Road is a mature semi-detached family home which has been extended and enjoys a large plot including landscaped gardens, a brick paved driveway and a single garage within a popular part of Frome.

The front door opens into an entrance hall which flows nicely into a spacious and light living room featuring a 'Jetmaster' open fireplace, a fantastic focal point for the room. Double doors from the living room open through to a spacious and open planned kitchen/dining room which provides a range of wall and base units, room for appliances and space for an island or a table and chairs. From here, an arch leads through to the extension which provides an excellent additional reception room with double doors spilling out to the beautiful back garden. There is also large utility/boot room on the ground floor and access into the single garage.

On the first floor there are three bedrooms, two good doubles and a decent single. There is also a family bathroom.

OUTSIDE

There is brick paved driveway parking to the front for up to three vehicles with access to the single garage and through to the back gardens. The back gardens are a nice size, level and fully enclosed and include a patio seating area adjoining the double doors to the house with a large lawn beyond.

ADDITIONAL INFORMATION

Gas central heating. Mains gas, water, electricity and drainage are all connected.

LOCATION

Frome is a historic market town with many notable buildings and features the highest number of listed buildings in Somerset. Frome offers a range of shopping facilities, a sports centre, several cafés, a choice of pubs, local junior, middle and senior schools, several theatres, and a cinema. Bath and Bristol are within commuting distance, and the local railway station connects at Westbury for London Paddington.





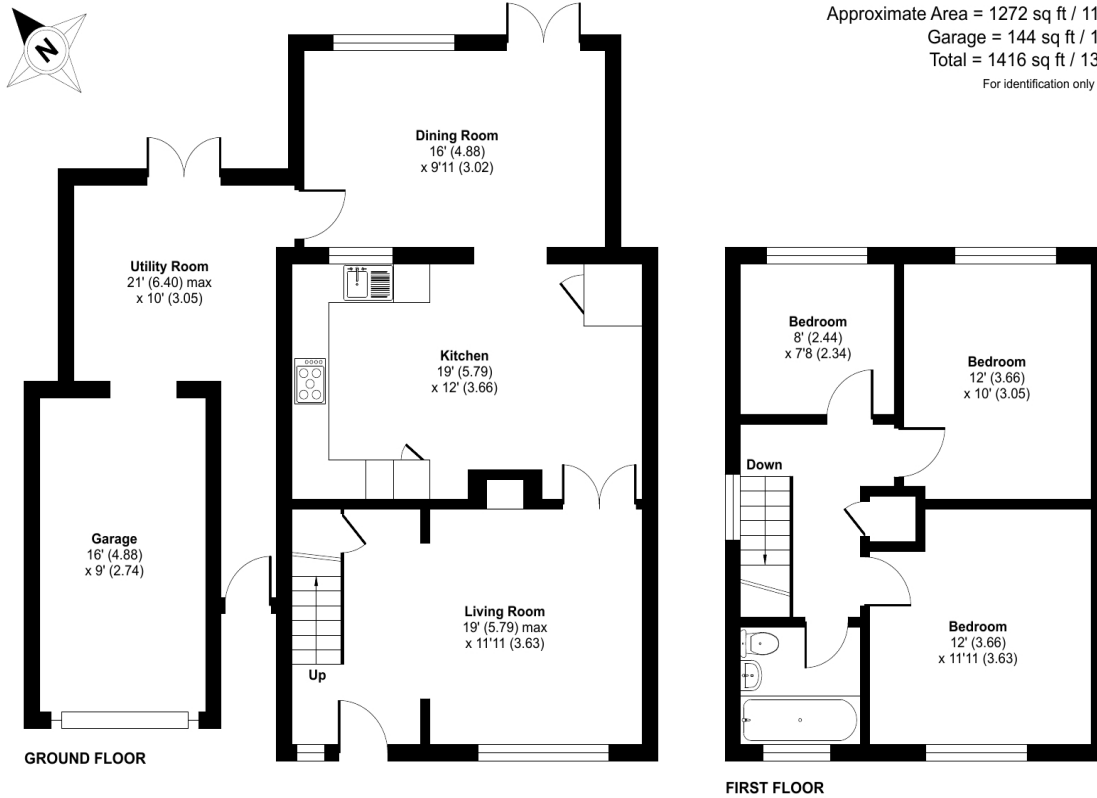
Whitestone Road, Frome, BA11

Approximate Area = 1272 sq ft / 118.1 sq m

Garage = 144 sq ft / 13.3 sq m

Total = 1416 sq ft / 131.5 sq m

For identification only - Not to scale



Floor plan produced in accordance with RICS Property Measurement Standards incorporating International Property Measurement Standards (IPMS2 Residential). © richcom 2024. Produced for Cooper and Tanner. REF: 1097867



FROME OFFICE

Telephone 01373 455060

6 The Bridge, Frome, Somerset, BA11 1AR

frome@cooperandtanner.co.uk

**COOPER
AND
TANNER**

Important Notice: These particulars are set out as a general outline only for the guidance of intended purchasers and do not constitute, nor constitute part of, an offer or contract. All descriptions, dimensions, reference to condition and necessary permissions for use and occupation, warranties and other details are given without responsibility and any intending purchasers should not rely on them as statements or representations of fact but must satisfy themselves by inspection or otherwise as to the correctness of each of them.

