



Ormesby Drive, Potters Bar, Hertfordshire, EN6 3EA

£785,000

- **FOUR BEDROOM SEMI-DETACHED HOME**
- **OPEN PLAN KITCHEN LOUNGE DINER**
- **EXTENDED LIVING ROOM**
- **LOFT CONVERSION WITH MASTER BEDROOM / EN-SUITE**
- **EXCELLENT DECORATIVE ORDER THROUGHOUT**
- **6M EXTENSION TO REAR**
- **DOWNSTAIRS TOILET**
- **OFF STREET PARKING X 2**
- **GOOD SCHOOL CATCHMENT AREA**
- **CLOSE TO SHOPS / RESTAURANTS / TRAIN STATION**

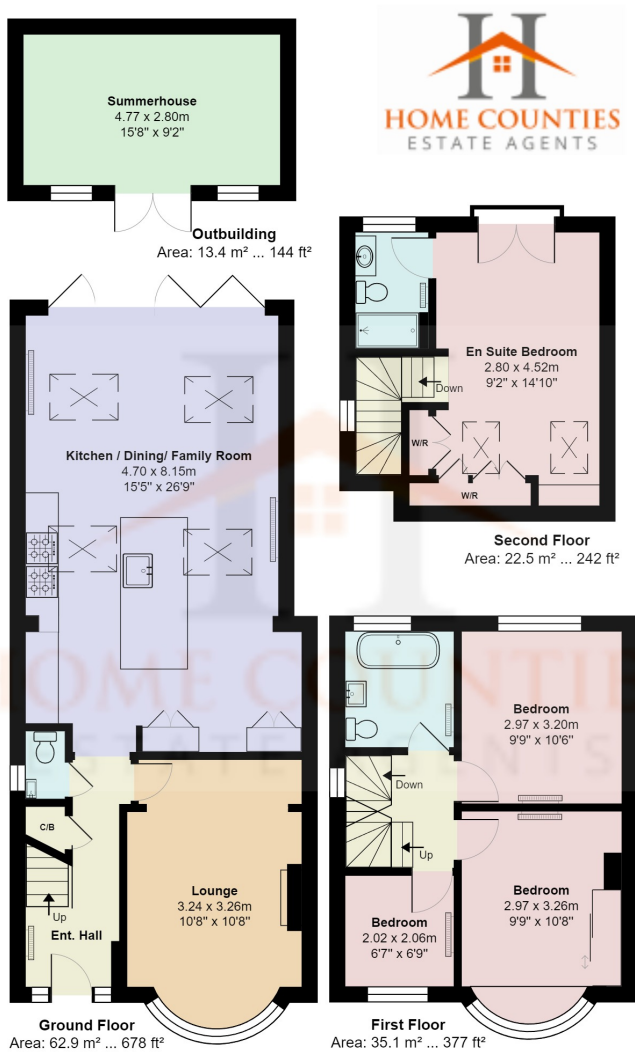
Ormesby Drive, Potters Bar, Hertfordshire, . EN6 3EA

£785,000 Freehold

This stunning four bedroom semi detached home benefitting from a superb 6m rear extension with vaulted ceiling featuring a fully fitted kitchen with island, breakfast bar, exposed bricks, four large velux windows and bi-folding doors that open up in to the decked patio area. The lounge to the front has also been extended to award the home with a larger living room, bay window, built in cupboards either side of the fireplace plus a wood burner. Other benefits on the ground floor are downstairs toilet and large floor tiles from the hallway through to the kitchen diner. The first floor consists of two double bedrooms, one single bedroom, currently used as an office plus family bathroom. The loft has been recently converted and features master bedroom with Juliette balcony, plus en-suite shower room.

Externally the property benefits from a block paved driveway, side access, decked patio area, lawn, kids play area to the rear and a garden room with power and light.

Viewing advised.



Ormesby Drive, Hertfordshire EN6

Total Area: 133.9 m² ... 1441 ft²

All measurements are approximate and for display purposes only

