



9 Whittle Court,
Knowlhill, Milton Keynes, MK5 8FT

Tel: 01908 231 551



mail@elevationstateagents.com



**17 Charter House, 426 Avebury Boulevard,
MILTON KEYNES, Buckinghamshire, MK9
2HS**

£260,000 Leasehold

- Converted building
- Two Bedrooms
- En-suite to Master
- Stylish fitted kitchen
- Walking distance of railway
- Chain Free
- Two bathrooms
- Secure parking
- EPC Rating



See our full selection of properties online at www.elevationstateagents.com



**** GATED PRIVATE PARKING, TWO BED TWO BATH PENTHOUSE ****

This Converted office building offers spacious apartments in Central Milton Keynes. Built to a high specification and set within stylish and contemporary architecture on Avebury Boulevard. Generously proportioned accommodation offers open plan lounge and fitted kitchen with built-in appliances which includes oven and hob, washer dryer, fridge freezer and dishwasher, two double bedrooms, en suite to master with a dressing room. Additional benefits include lift in building, landscaped external areas and walking distance of mainline railway station. Ideal opportunity for the busy professional looking for close proximity to all central business and shopping amenities. The location couldn't be more central with CMK shopping centre a short walk away and the train station almost visible with direct links into London's Euston station in 35 mins.

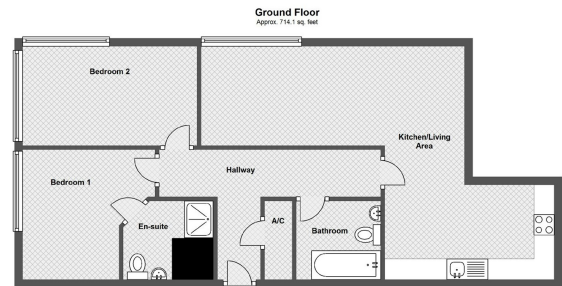
£200 a year ground rent

115 years left on lease

Service charge is £2809/year.

Disclaimer

Whilst we have endeavoured to prepare our sales particulars accurately none of the services, appliances or equipment have been tested. A buyer should satisfy themselves on such matters prior to purchase. Any measurements or distances mentioned in these particulars are for guide reference only. If such particulars are fundamental to a purchase, buyers should rely on their own enquiries. All enquiries should be directed to Elevation Estate Agents in the first instance.



Total area: approx. 714.1 sq. feet
Floor Plans are for layout purposes only.
Plan produced using Planity.