



ELM DRIVE  
STRET福德

£595,000



3 BEDROOMS



3 BATHROOMS



1 RECEPTION



EPC GRADE- B



VITALSPACE  
INDEPENDENT ESTATE AGENTS





# Elm Drive, Stretford, M32 9AR

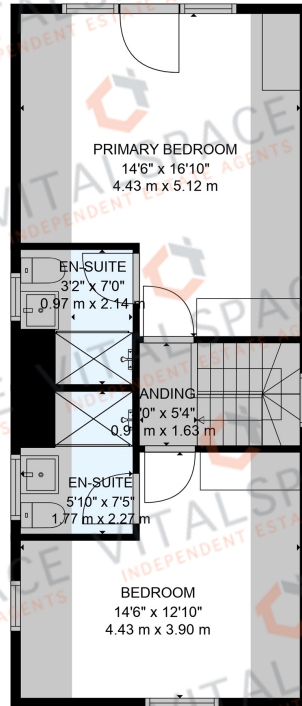
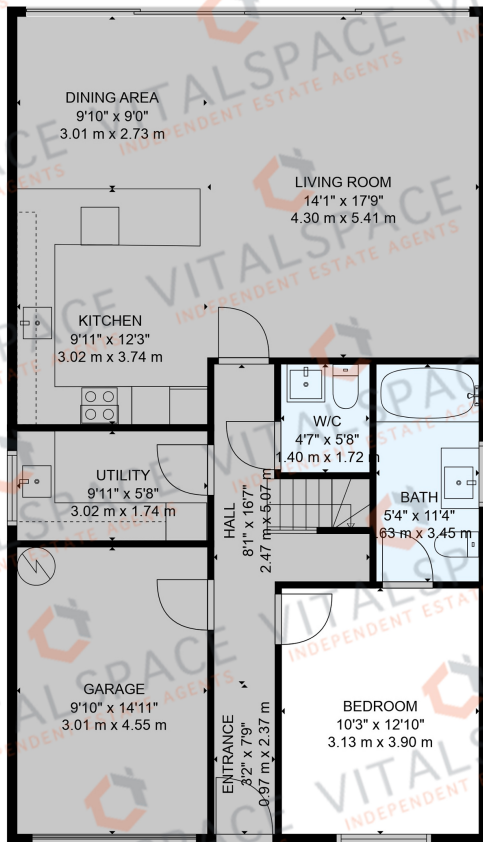
**\*\*VIDEO TOUR\*\* - \*\*CONTEMPORARY FAMILY HOME ON A QUIET STRETFORD CUL-DE-SAC\*\* - VITALSPACE ESTATE AGENTS are delighted to offer for sale this stunning detached executive family home nestled on a quiet cul-de-sac just off Sandy Lane in Stretford. This property is designed to the highest specification and complimented further by a stunning open plan kitchen and an impressive master bedroom and en-suite bathroom. The opulent living accommodation finished to an uncompromising specification and is one of three recently built properties built on the site of a former Ambulance Station. The tastefully presented accommodation is arranged over TWO FLOORS with expansive accommodation extending to approximately 124 Sqm / 1335 Sqft including THREE DOUBLE BEDROOMS and an integral 14ft garage. Built in 2022 / 2023 by Horticon Ltd this detached home is finished to an exceptionally high standard, with high quality fixtures and fittings, underfloor heating throughout the ground floor, 'Neff' kitchen appliances and Quartz kitchen worksurfaces. In further detail the accommodation comprises; a warm and welcoming entrance hallway, a generously sized ground floor double bedroom and three piece tiled bathroom, a breathtaking open plan dining/kitchen/living with a large breakfast bar and bi-folding doors leading out into the rear garden featuring secured fencing and mature trees that enhance privacy and charm. A useful utility room with access into an integral garage completes the ground floor accommodation. Stairs rise to a shaped first floor landing where two spacious bedrooms can be found, both serviced by luxury tiled en-suite shower rooms. The master bedroom can be found to the rear of the property enhanced by bi-folding doors amplifying the sense of openness with lush woodland views. Externally, this property is approached via a Tarmac driveway up to an integral garage with a stable style door and EV charging point. To the rear, a sunny SOUTH FACING and elevated tiled patio area creates a perfect space for alfresco dining during those summer months leading down onto a shaped lawned garden with timber fenced boundaries. Every detail of this home has been thoughtfully designed to blend seamlessly with its serene surroundings. Further benefits of this desirable home include hardwired CAT 5, Air-conditioning and the remainder of a 10 year builders warranty. Early viewing is highly recommended to appreciate this family home.**











## Features

- Three double bedrooms
- Detached family home
- Quiet cul-de-sac position
- Open plan dining kitchen
- Utility room & downstairs WC
- Impressive open plan kitchen
- Secluded rear garden
- Driveway and integral garage
- 124 Sqm / 1335 Sqft
- Built in 2022 / 2023

## Frequently Asked Questions

How long have you owned the property for? Since new - 2022 / 2023

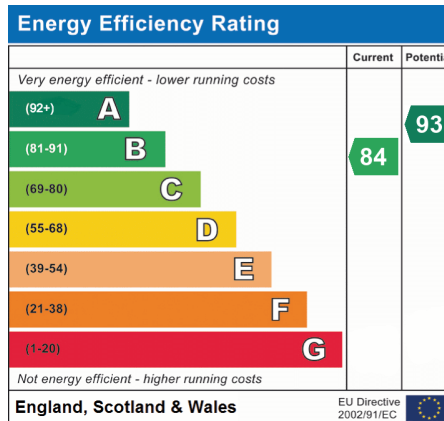
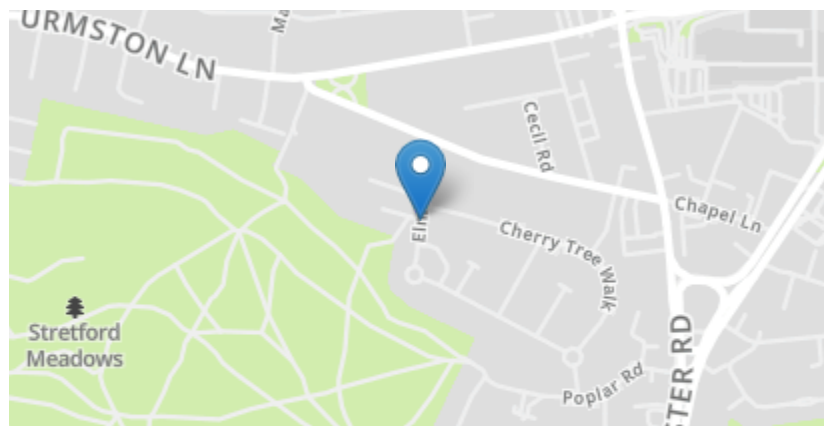
Air-conditioning to open plan kitchen / Pressurised central heating system

When was the property last rewired? When built 2022 / 2023

Which way does the garden face? South facing rear garden

Reasons for sale of property? Relocate

If you would like to submit an offer on this property, please visit our website - <https://www.vitalspace.co.uk/offer> - and complete our online offer form



VitalSpace and their clients give notice that: 1 They have no authority to make or give any representations or warranties in relation to the property. These particulars do not form part of any offer or contract and must not be relied upon as statements or representations of fact. 2 Any areas, measurements are approximate. The text, photographs and plans are for guidance only and are not necessarily comprehensive. It should not be assumed that the property has all necessary planning, building regulations or other consents and VitalSpace have not tested any services, equipment or facilities. Purchasers must satisfy themselves by inspection or otherwise.