



**56, Hartford Road**  
Northwich CW9 8JF

**£850**

**[www.westates.co.uk](http://www.westates.co.uk)**  
**01606 331784**



- Entrance Hall
- Two Reception Rooms
- Fitted Kitchen
- Two Bedrooms
- Large Bathroom
- Good Size Rear Garden
- Off Road Parking

### Description

A deceptively spacious mid-terrace cottage, located in this highly sought after Cheshire village. The property has been recently decorated throughout and has the benefit of PVCu double glazing and gas central heating and the accommodation comprises: Entrance hall, lounge, dining room, fitted kitchen, first floor landing, two double bedrooms and bathroom. There is parking to the front and there is a good size garden to the rear.



**Location**

LET

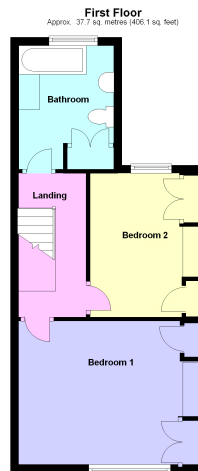
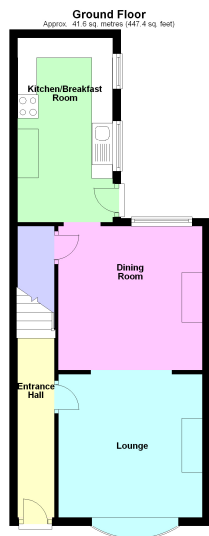
**Tenure**

**EPC Rating:**

**Important Notes**

Type Here





**Boomin**

These particulars, whilst believed to be accurate are set out as a general outline only for guidance and do not constitute any part of an offer or contract. Intending purchasers should not rely on them as statements of representation of fact, but must satisfy themselves by inspection or otherwise as to their accuracy. All measurements quoted are approximate. We are unable to confirm the working order of any fixtures and fittings including appliances that are included in these particulars. No person in this firm's employment has the authority to make or give any representation or warranty in respect of the property.