



Offers Over £129,950
124 Keltyhill Avenue, Kelty, Fife, KY4 0LF

124 Keltyhill Avenue, Kelty, Fife, KY4 0LF

Welcome to 124 Keltyhill Avenue, Kelty, A spacious Three-Bedroom Semi-Detached Villa with generous gardens & driveway set within a popular residential area of Kelty and offers spacious, well-proportioned accommodation.

The ground floor comprises a welcoming entrance hallway leading to a bright and generously sized living room. The beautifully modern kitchen is fitted with a range of floor and wall-mounted units, complemented by an integrated oven, electric hob, and overhead extractor fan. The space also benefits from plumbing for a washing machine and dishwasher, along with space for a freestanding fridge freezer, making it both stylish and highly functional. A convenient ground floor shower room adds further practicality.

On the upper level, the property boasts three well-proportioned double bedrooms, all offering excellent space for furnishings and storage.

Externally, the property benefits from a large private garden, providing fantastic outdoor space for families, gardening enthusiasts, or future development potential (subject to planning).

A driveway to the side offers off-street parking for multiple vehicles. Further benefits include double glazing, gas central heating, and excellent storage throughout.

Situated within easy reach of local amenities, schooling, and transport links, this property offers a perfect blend of comfort, space, and convenience.

Early viewing is highly recommended to fully appreciate what this fantastic home has to offer.

ground floor

Entrance Hallway



Living room



3.9m x 4.2m (12' 10" x 13' 9")

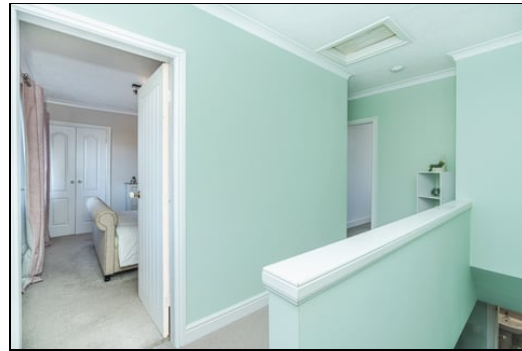
Kitchen



3m x 4.1m (9' 10" x 13' 5")



Top Hallway



Shower room



Bedroom front



1.8m x 2m (5' 11" x 6' 7")

first floor

2.8m x 4.1m (9' 2" x 13' 5")



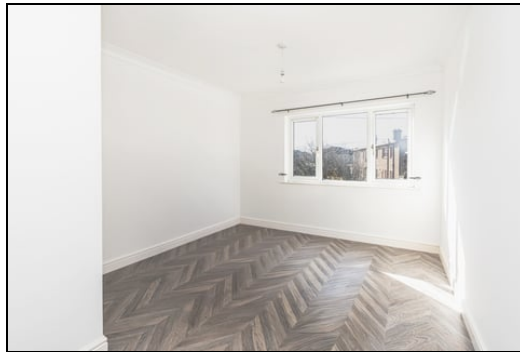
Bedroom rear left



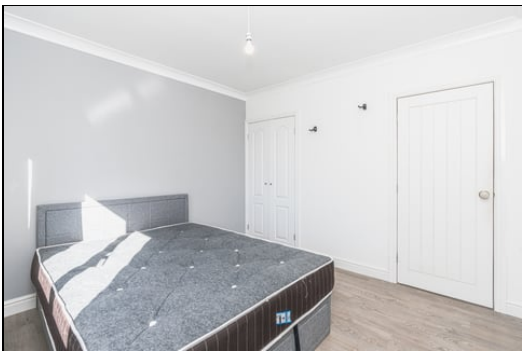
Gardens



4.2m x 3.1m (13' 9" x 10' 2")



Bedroom rear right



3.1m x 3.1m (10' 2" x 10' 2")

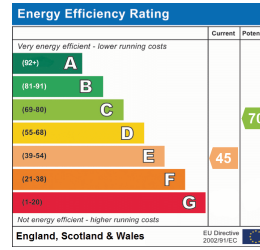
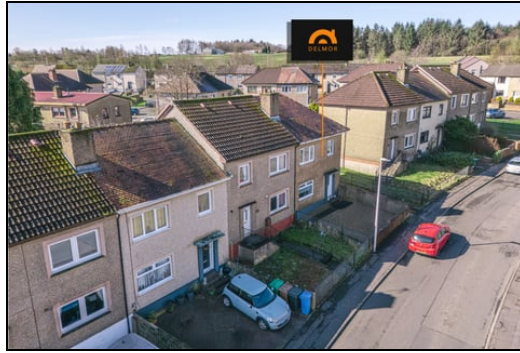


Extras

All floor coverings, oven, electric hob, overhead extractor fan and integrated washing machine

SONIC TAPE

All measurements have been taken using a sonic tape measure and therefore, may be subject to a small margin of error.



MEASUREMENTS

All measurements are approximate.

APPLIANCES/SERVICES

The mention of any appliances and/or services within these Sales Particulars does not imply they are in fully working order.

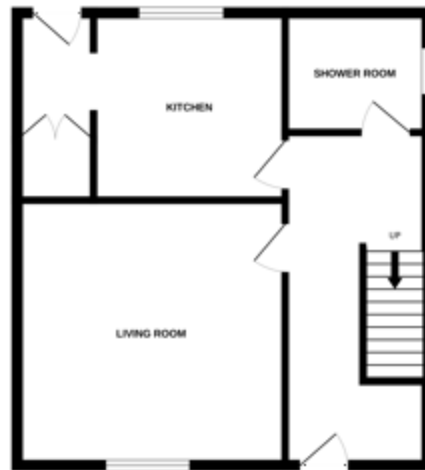
MORTGAGE & FINANCIAL ADVICE

Qualified Mortgage and Financial Consultants can provide you with up to the minute information on many of the rates available. To arrange an appointment telephone this office. **YOUR HOME IS AT RISK IF YOU DO NOT KEEP UP REPAYMENTS ON A MORTGAGE OR OTHER LOANS SECURED ON IT.** Full written quotation available on request. A suitable life policy may be required. Loans are subject to status. Minimum age 18.

FREE VALUATION

How much is your property worth?. We can provide you with the answer. We offer a free valuation service without cost or obligation. Please call this office for an appointment.

GROUND FLOOR



1ST FLOOR



While every attempt has been made to ensure the accuracy of the floorplan contained here, measurements of doors, windows, rooms and any other items are approximate and no responsibility is taken for any error, omission or mis-statement. This plan is for illustrative purposes only and should be used as such by any prospective purchaser. The services, systems and appliances shown have not been tested and no guarantee as to their operability or efficiency can be given.
Made with Metropix (2024)