



Two Bedroom Detached Bungalow  
Coppergate, Hempstead, Gillingham, Kent, ME7 3QN

£450,000  
Freehold

## Coppergate, Hempstead, Gillingham, Kent, ME7 3QN

£450,000

Freehold

### Description

Detached bungalows in sought Hempstead are scarce and rarely available, so here's your opportunity to secure one for yourself. Beautifully presented and with a natural décor throughout, the accommodation offers a spacious hallway with two handy storage cupboards, a well-appointed modern white gloss kitchen, two double bedrooms with the main bedroom benefitting from a bay window and sliding wardrobes, family bathroom with shower over the bath, sizeable lounge/diner, and a fantastic sun room. Externally a fantastic beautiful south facing rear garden with its abundance of space, established shrubs/plant borders and brick built workshop. To the front, a recently laid resin driveway, parking for multiple vehicles and garage. Well located for a variety of schools and open spaces such as Capstone Country Park and the Darland Banks, and within reach of Hempstead Valley with its variety of restaurants and shops, and handy access to the M2 this is a must see, so call Greyfox Sales and Lettings Rainham to book your viewing now.

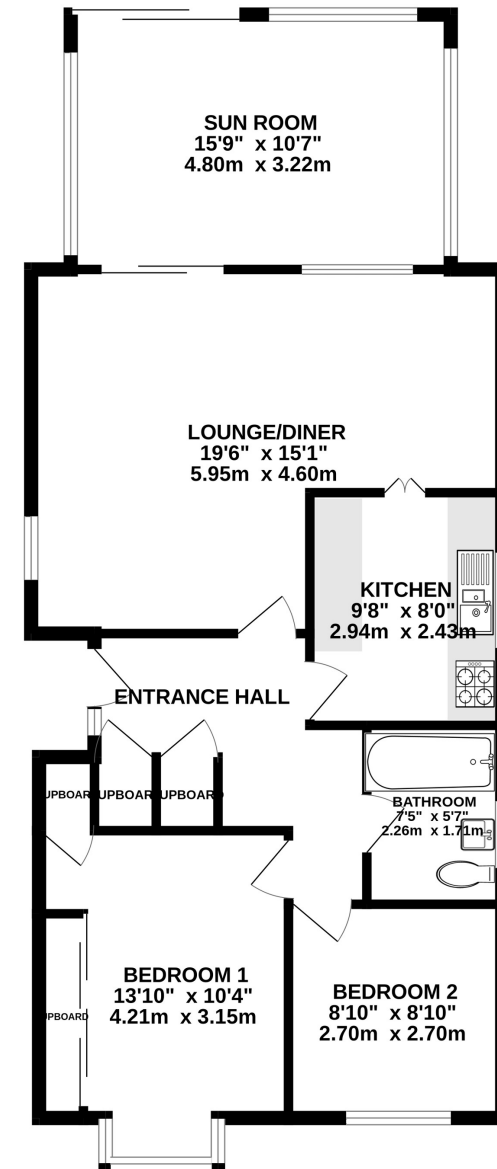
### Key Features

- Detached Bungalow
- Sought After Hempstead Location
- Two Double Bedrooms
- Fantastic Sun Room
- Garage & Driveway for Multiple Vehicles
- South Facing Rear Garden measuring approx. 71 x 55ft.
- Great Access To Motorway Links & Public Transport
- Brick Built Workshop

### Local Area

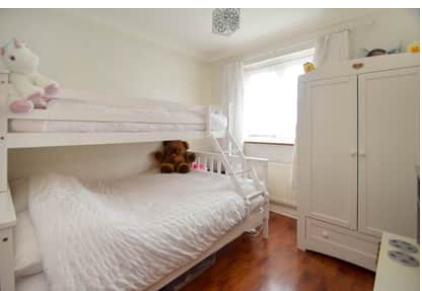
Hempstead Valley is located to the south of Gillingham and Rainham with excellent vehicular links to the M20/M25 and is within reach of Ebbsfleet and Ashford International. There are local railway services at Rainham and Gillingham. Many amenities are available at Hempstead Valley shopping centre. Capstone Country Park and the ski centre are also nearby.

GROUND FLOOR  
843 sq.ft. (78.4 sq.m.) approx.



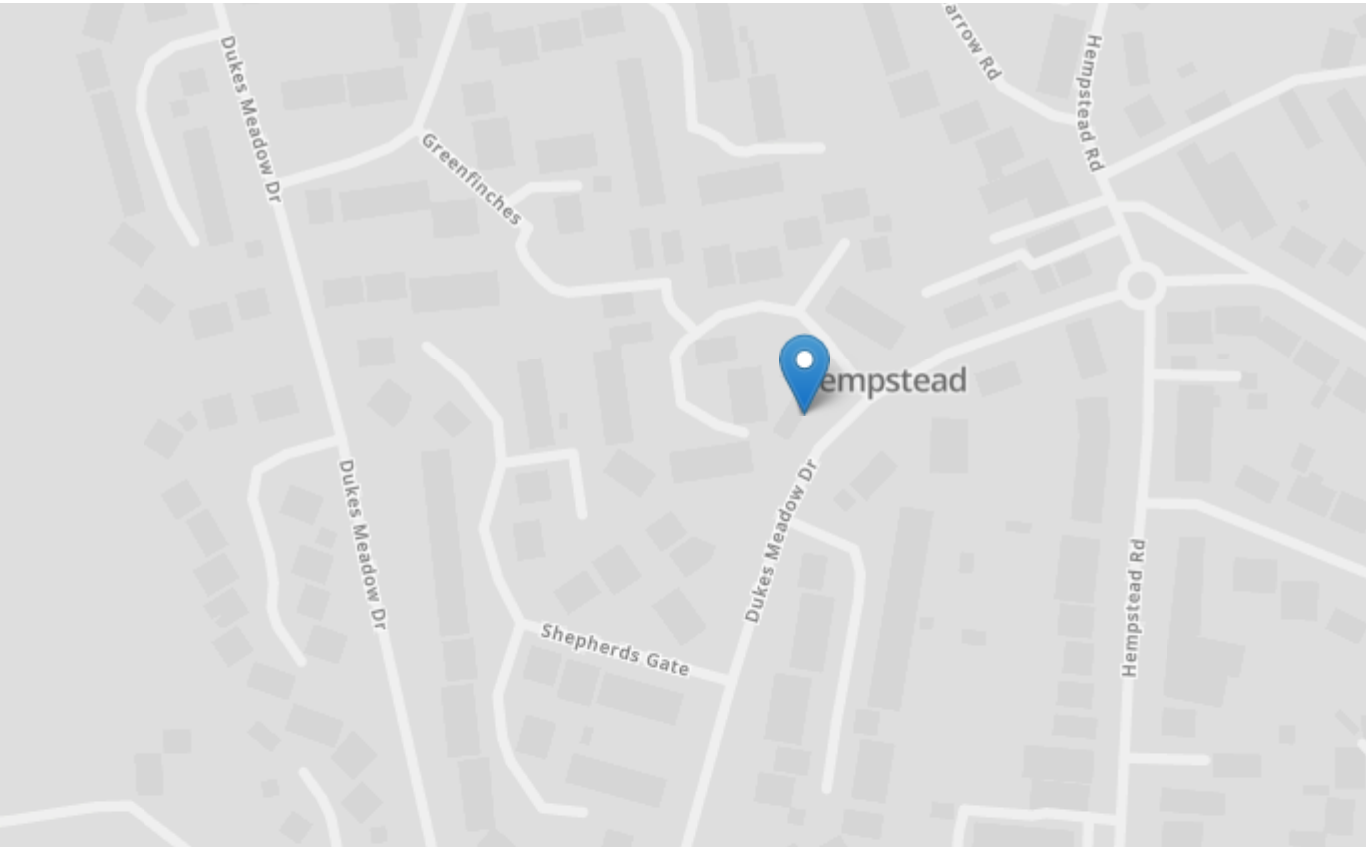
TOTAL FLOOR AREA : 843 sq.ft. (78.4 sq.m.) approx.


Whilst every attempt has been made to ensure the accuracy of the floorplan contained here, measurements of doors, windows, rooms and any other items are approximate and no responsibility is taken for any error, omission or mis-statement. This plan is for illustrative purposes only and should be used as such by any prospective purchaser. The services, systems and appliances shown have not been tested and no guarantee as to their operability or efficiency can be given.  
Made with Metropix ©2024



## Property Location

Coppergate, Hempstead, Gillingham, Kent, ME7 3QN



Energy Efficiency Rating		Current	Potential
Very energy efficient - lower running costs			
(92+)	<b>A</b>		
(81-91)	<b>B</b>		
(69-80)	<b>C</b>		79
(55-68)	<b>D</b>	62	
(39-54)	<b>E</b>		
(21-38)	<b>F</b>		
(1-20)	<b>G</b>		
Not energy efficient - higher running costs			
England, Scotland & Wales		EU Directive 2002/91/EC	

<b>Tenure</b>	Freehold
<b>Lease Term</b>	N/A
<b>Ground Rent</b>	N/A
<b>Service Charge</b>	N/A
<b>Local Authority</b>	Medway
<b>Council Tax</b>	Band E

### Greyfox Walderslade

Unit 2, Thetford House  
Walderslade Village Centre  
Walderslade Road  
Chatham  
Kent  
ME5 9LR  
Tel: 01634 672227 Email:  
walderslade@greyfox.co.uk

### Greyfox Rainham

67C High Street  
Rainham  
Kent  
ME8 7HS  
Tel: 01634 377737 Email:  
rainham@greyfox.co.uk

#### Agent Notes

These particulars are prepared as a general guide to a broad description of the property and should not be relied upon as a statement or representation of fact and do not constitute part of an offer or contract. The seller does not make or give nor do our employees or Greyfox have authority to make or give any representation or warranty to the property. We have not carried out a structural survey and the services, appliances and specific fittings have not been tested. All photographs, measurements, floorplans and distances referred to are given as a guide only and should not be relied upon for the purchase of carpets or any other fixtures or fittings. Lease details, service charges and ground rent (where applicable) and council tax are given as a guide only and should be checked and confirmed by you on inspection and your solicitor prior to exchange of contracts. If there are any points of particular importance to you we will be pleased to check the information for you and to confirm that the property remains available. This is particularly important should you be travelling some distance to view and where statements have been made by us to the effect that the information has not been verified. The copyright of all details, photographs and floorplans remain exclusive to Greyfox. For details of our privacy policy and referral fee arrangements with any of our selected partner companies please visit <https://www.greyfox.co.uk/legal/privacy> and <https://www.greyfox.co.uk/referral-fees>.