

SOLD
STC



2 Blackcliffe Field Close, Whitwell, Worksop, Nottinghamshire S80 4NY

£120,000 - Freehold



78, Bridge Street, Worksop, S80 1JA 01909 509001 info@bartropanddilks.co.uk

PROPERTY SUMMARY

Of possible interest for first time buyers with an internal inspection being highly recommended is this two bedroom town house that is well presented and decorated throughout with gas central heating and uPVC double glazed windows. Being much improved by the current owners with a high specification throughout, the accommodation comprises of; open plan lounge/kitchen with the kitchen having a excellent range of fitted units and split level cooker. On the first floor; landing, two bedrooms and bathroom fitted in a modern white suite. Outside; enclosed generous size garden, ample parking.

POINTS OF INTEREST

- *Of Interest First Time Buyers*
- *Much Improved*
- *Well Decorated*
- *Viewing Highly Recommended*
- *Two Bedroom*
- *Town House*
- *Gas Central Heating*
- *uPVC Double Glazed*
- *Ample Parking*
- *Cul De Sac Location*



ROOM DESCRIPTIONS

Ground Floor

Lounge/Kitchen 6.13m x 3.81m (20' 1" x 12' 6")

An open plan room with entrance door, side and rear windows, stairs to the first floor. The kitchen with an excellent range of fitted wall and base units, worksurfaces, sink unit with mixer tap, electric hob, oven and extractor, plumbing for an automatic washing machine, fridge freezer space.

First Floor

Landing

Bedroom One 3.31m x 2.79m (10' 10" x 9' 2")

With mirror fronted sliding wardrobes, rear facing window, central heating radiator.

Bedroom Two 2.83m x 1.86m (9' 3" x 6' 1")

With a rear facing window, central heating radiator.

Bathroom

White modern suite with panelled bath, wash hand basin, low flush w.c, side facing window, tiling, radiator.

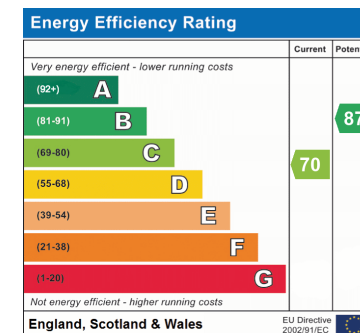
Outside

Garden

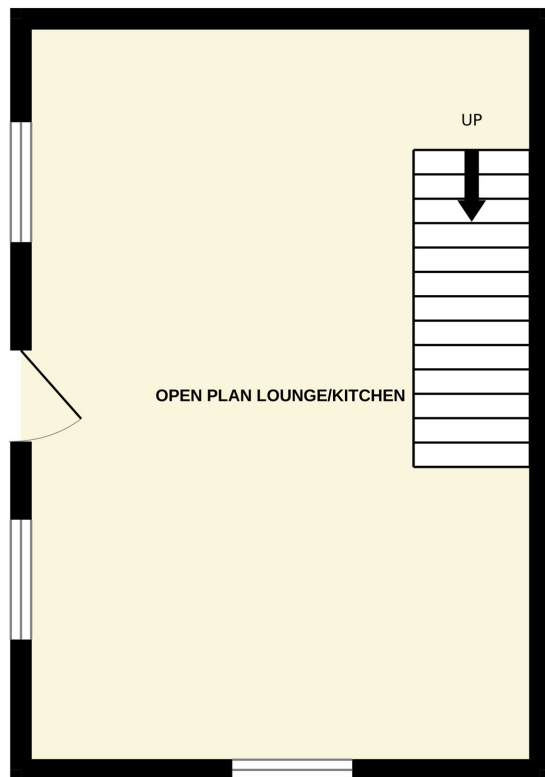
Generous size enclosed garden mainly laid to lawn. Two garden sheds.

Off Road Parking

Providing ample parking.



GROUND FLOOR



1ST FLOOR

