



17/6, Calder Gardens, Edinburgh, EH11 4JF

Well Presented & Spacious, Three-Bedroom, Second Floor Flat.

Up to date price and viewing info at mov8realestate.com/property

éspc rightmove[®] Zoopla
find your happy

Property Description

Well-presented and spacious, three-bedroom, second-floor flat, forming part of an established residential development. Located in the Sighthill area, lying to the west of Edinburgh city centre.

Comprises a; vestibule, hallway, living/dining room, kitchen, three double bedrooms, and a family bathroom.

Requiring updating, features include a fitted kitchen, double glazing, gas central heating, contemporary flooring and good storage provision.

Externally, there are shared drying/stores on each stair level, ample unrestricted residential parking, and extensive communal greens to the front and rear.

A vestibule entrance opens to the main hall featuring four built-in store cupboards, a dado rail, a pendant and wall-mounted light fittings. A bright and spacious public room offers dual-aspect views of both the Pentland Hills and city skyline and includes a gas fireplace and a central pendant light fitting.

Set off the lounge, the kitchen has built-in store cupboards, together with extensive fitted storage and worktops including an integrated oven and gas hob.

Bedrooms one and two are set to opposite aspects with both including built-in wardrobes. A flexible third bedroom currently has French doors to the hall offering a potential second public/dining room.

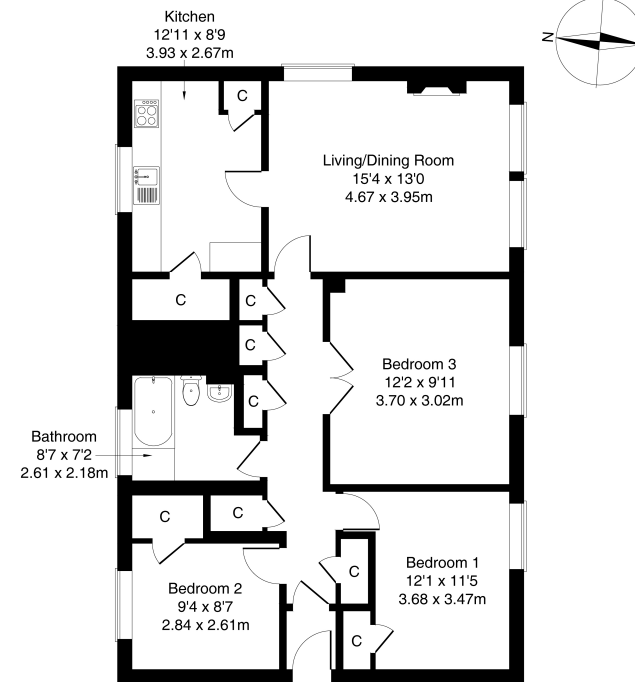
The generous bathroom currently has a three-piece suite fitted, including a shower unit over the bath.

A 360 Virtual Tour is available online.

mov⁸ REAL ESTATE
Estate Agents and Solicitors

17/6 Calder Gardens Edinburgh EH11 4JF

Approximate Gross Internal Area: (1023 sq ft - 95 sq m.)



Legal Disclaimer : Floor-plan and measurements are for illustrative guidance only, and not intended to form part of any contract.

Area Description

Sighthill is a well-established area to the west of the city centre, lying within easy reach of both Stevenson College and the Sighthill campus of Napier University. There is an excellent variety of shops, amenities and more extensive retail opportunities available at The Gyle Shopping Centre and Hermiston Gait retail park. Many recreational facilities are available in the area.

such as the Kingsknowe Golf Course, Sighthill Bowling Club, Pure Gym, Sighthill Public Park, and The Corn Exchange. A regular bus service operates to and from the city centre within the area, with the city bypass located a quick drive away, providing easy access to the M8 and the motorway network.





Our Services

-  Free pre-sale property valuations
-  Great value fixed estate agency fees
-  Extensive buyer matching database
-  Purchase and sale conveyancing

Contact Us

0345 646 0208

sales@mov8realestate.com

www.mov8.com

Head Office

6 Redheughs Rigg, Edinburgh, EH12 9DQ

Glasgow Office

77 Renfrew Street, Glasgow, G2 3BZ



Estate Agents and Solicitors



These particulars do not form part of any contract and the statements or plans contained herein are not warranted nor are they to scale. All descriptions, dimensions, areas, reference to condition and necessary permissions for use and occupation and other details are given in good faith, and are believed to be correct, but any prospective purchaser should not rely on them as statements or representations of fact, and any prospective purchaser must satisfy themselves by inspection or otherwise as to the correctness of each of them. The Seller shall not be bound to accept the highest or any offer nor to accept a full offer of the Fixed Price where this is applicable. Approximate measurements have been taken by sonic device and measurements are most often taken to the widest point of any room or space. Services and appliances have not been tested for efficiency or safety and no warranty is given as to their compliance with any Regulations. Offers should be made using the Combined Standard Clauses.