



Ash Grove, Hounslow, Greater London, TW5 9DT

£545,000 Freehold

- Extended Three Bedroom Semi-Detached House For Sale
- Large Through Lounge and Separate Kitchen
- Two Bathroom Suites
- Three Good Size Bedrooms
- Large Rear Garden (approx. 65ft)
- Rear Garage and Side Access Available
- No Onward Chain
- Contact A Dedicated Member Of Staff Today at Blue Estate Agents
- EPC Rating





NO ONWARD CHAIN Blue Estate Agents bring to market, a 1930s extended three bedroom end of terrace property, located on the popular Ash Grove, Heston, TW5. The property boasts generous living space including a large through lounge, separate fully fitted kitchen and a ground floor shower suite. To the first floor, the property has three good size bedrooms and a bathroom suite. The property has been extended to the rear and has scope to extend further, subject to usual planning permission. Outside, the property boasts a 65ft garden (approx.) and a large rear garage. The property also benefits from a large side access, double glazed windows, gas central heating and off street parking for two cars. The property is located on Ash Grove, TW5 and within easy reach of Hounslow West Tube Station (0.6 miles) and within a short drive to the A4/M4. To book your viewing, please contact a dedicated member of Blue Estate Agents

Disclaimer

Whilst we have endeavoured to prepare our sales particulars accurately none of the services, appliances or equipment have been tested. A buyer should satisfy themselves on such matters prior to purchase. Any measurements or distances mentioned in these particulars are for guide reference only. If such particulars are fundamental to a purchase, buyers should rely on their own enquiries. All enquiries should be directed to Blue Estate Agents in the first instance.

Sitting Room / Dining Room

3.48m x 8.35m (11' 5" x 27' 5")

Kitchen / Breakfast Room

4.67m x 3.47m (15' 4" x 11' 5")

Ground Floor Shower Suite

1.73m x 2.67m (5' 8" x 8' 9")

Bedroom One

3.15m x 4.40m (10' 4" x 14' 5")

Bedroom Two

3.15m x 3.86m (10' 4" x 12' 8")

Bedroom Three

1.92m x 2.75m (6' 4" x 9' 0")

Bathroom Suite

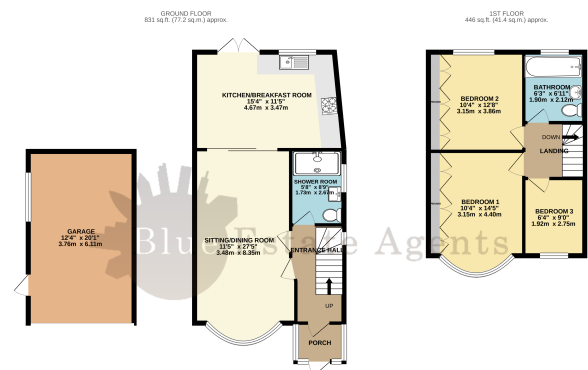
1.90m x 2.12m (6' 3" x 6' 11")

Garage

3.76m x 6.11m (12' 4" x 20' 1")

Garden

Approx. Length 60 ft.



TOTAL FLOOR AREA: 1277 sq ft (118.4 sq m) approx.
Whilst every effort has been made to ensure the accuracy of the figures contained here, measurements of actual properties should be taken before any offer is made. The information is provided for general guidance only and does not constitute an offer of any financial product. The services, appliances and equipment mentioned are not tested and no guarantee can be given regarding their condition or operation.