



**AUBREY & FINN**  
For Sale  
01727 222290

**AUBREY & FINN**

**29 Bowmans Court £270,000**

## Property

This is an excellent mid terraced house very close to M1 motorway, Industrial area and the town centre. It briefly comprises one double bedroom, bathroom with shower, lounge with door to attractive compact low maintenance garden and recently fitted kitchen with appliances. Offered furnished with storage cupboards, use of loft, gas central heating and ample parking. Available beginning of April.

## Lounge

11ft 10in x 14ftt 6in approx.

L-shaped as stairs rise upwards.

With aspects to rear and door out to small patio garden, radiator.



## Kitchen

With dishwasher, washing machine, fridge freezer, electric oven with 5 ring gas hob and extractor fan over. Window to front aspect

## Bedroom

12ft 10in x 8ft 6in approx. plus alcove.

Aspects to rear, radiator and overstairs storage cupboard.

## Bathroom

With 3 piece suite in white and shower over bath. Window to front aspect.



## Garden

Small patio garden with shingled borders.

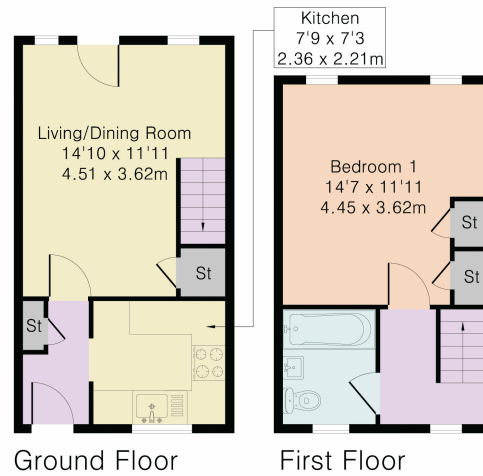




&



Approximate Gross Internal Area 502 sq ft – 47 sq m  
Ground Floor Area 265 sq ft – 25 sq m  
First Floor Area 237 sq ft – 22 sq m



Although Pink Plan Ltd ensures the highest level of accuracy, measurements of doors, windows and rooms are approximate and no responsibility is taken for error, omission or misstatement. These plans are for representation purposes only as defined by RICS code of measuring practice. No guarantee is given on total square footage of the property within this plan. The figure icon is for initial guidance only and should not be relied on as a basis of valuation.



Hemel Hempstead Office: 01442 230400

St Albans Office: 01727 221290

E: [info@aubreyandfinn.co.uk](mailto:info@aubreyandfinn.co.uk)

W: <http://www.aubreyandfinn.co.uk>