

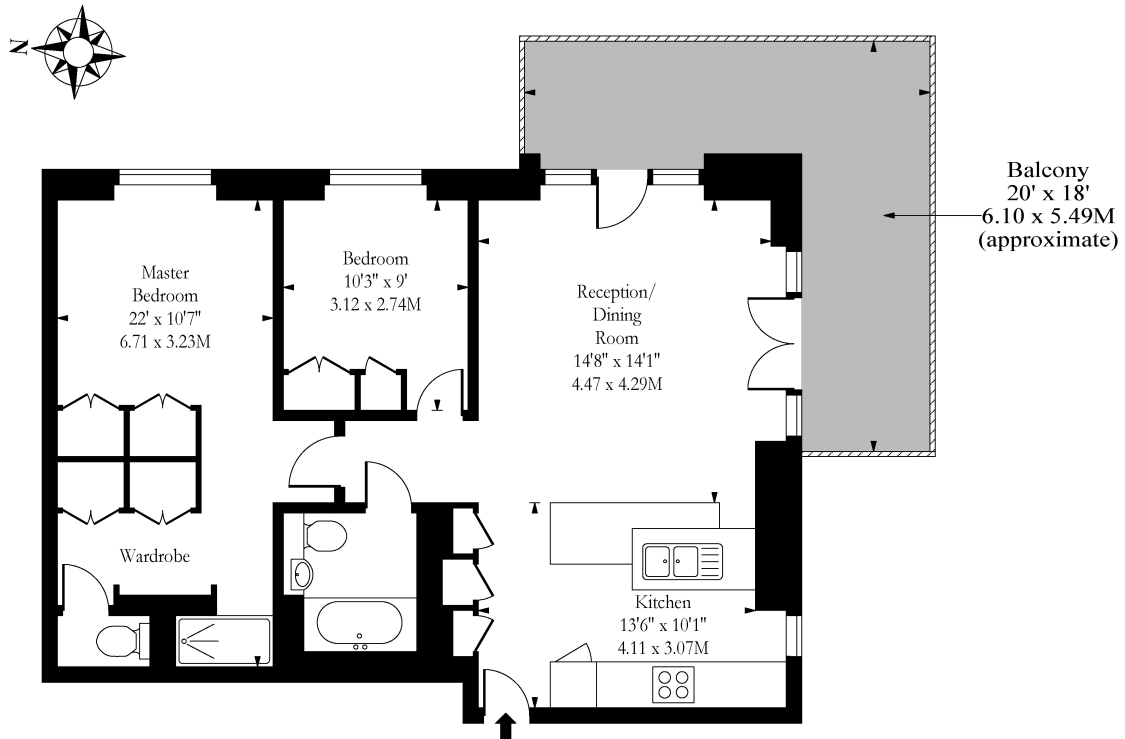


Lessing Building, Heritage Lane, London, NW6 2BF

£860,000

- Two Double Bedroom Apartment
- Concierge Service
- Two Bathrooms
- Air Conditioning Throughout
- Second Floor with Lift
- Gym, Steam Room & Sauna
- Dual Aspect Balcony
- High Specification

Lessing Building, NW6



Second Floor

Approx Gross Internal Area 810 Sq Ft - 75 Sq M

Measured in accordance with RICS guidelines. Every attempt is made to ensure accuracy
However all measurements are approximate.

The floor plan is illustrative purposes only and is not to scale

www.tomekphotography.co.uk

