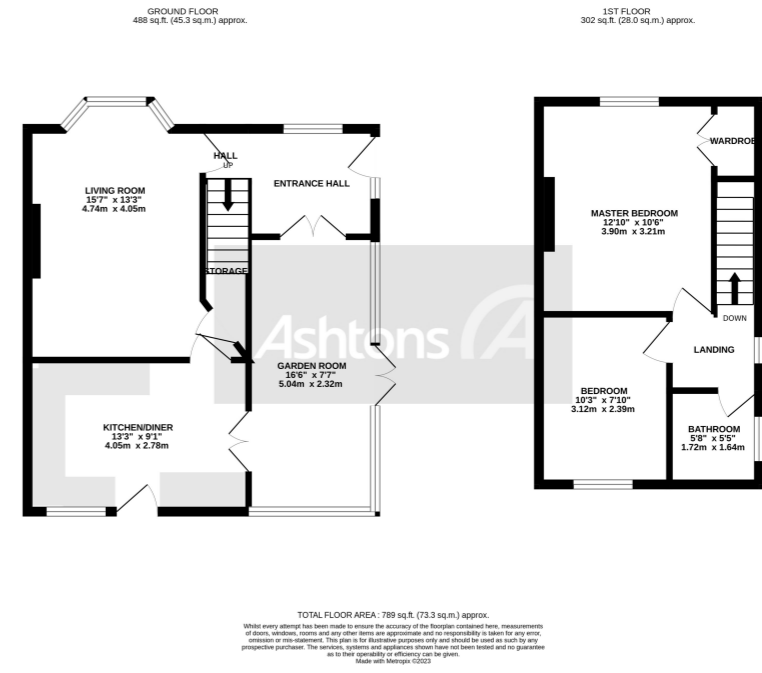


# Victoria Avenue, Great Sankey, WA5 £235,000



Welcome to this exquisite two-bedroom semi-detached house, an architectural gem built in 1927. Situated in an idyllic location overlooking the picturesque Stocks Lane playing fields, this property offers a truly remarkable living experience. Boasting a thoughtfully designed ground floor extension complete with underfloor heating, along with meticulously updated kitchen and bathroom spaces, this home seamlessly blends modern comforts with timeless charm.

 x 2     x 1

See more of this house at [ashtons.net](https://www.ashtons.net)

