



23 Rundells, Letchworth Garden City, Hertfordshire. SG6 2SF





1 Bedroom Apartment

£155,000 Leasehold

Offered to the market chain free, this well presented one bedroom apartment offers spacious accommodation throughout with lots of storage. The property is located within reach of the town centre and mainline station whilst also providing quick and easy access to the A1m and is the ideal investment opportunity or first time buy.

- CHAIN FREE
- Top floor ONE bedroom apartment
- Perfect investment or first time buy
- Well-presented throughout
- Bright and spacious
- Very good storage
- Ground rent £107
- Annual service charge £400
- Leasehold - 106 years remaining
- EPC rating E. Council tax band B

Top Floor:**Entrance Hall:**

Carpet. Underfloor heating. Large storage cupboard. Second storage cupboard.

Living Room:

Abt. 14' 2" x 10' 4" (4.32m x 3.15m) Laminate flooring. Underfloor heating. Double glazed window to rear aspect.

Kitchen:

Abt. 9' 5" x 6' 9" (2.87m x 2.06m) Laminate flooring. Underfloor heating. Double glazed window to rear aspect. Worktops with tiled splashback and a range of wall and base mounted units with integrated; oven, electric hob, extractor and sink/drain. Space for fridge/freezer and washing machine.

Bedroom:

Abt. 15' 3" x 8' 9" (4.65m x 2.67m) Carpet. Underfloor heating. Built-in wardrobe. Double glazed window to rear aspect.

Bathroom:

Laminate flooring. Extractor. Underfloor heating. Bath with mixer taps, tiled walls and wall mounted electric shower. Wash basin and WC.

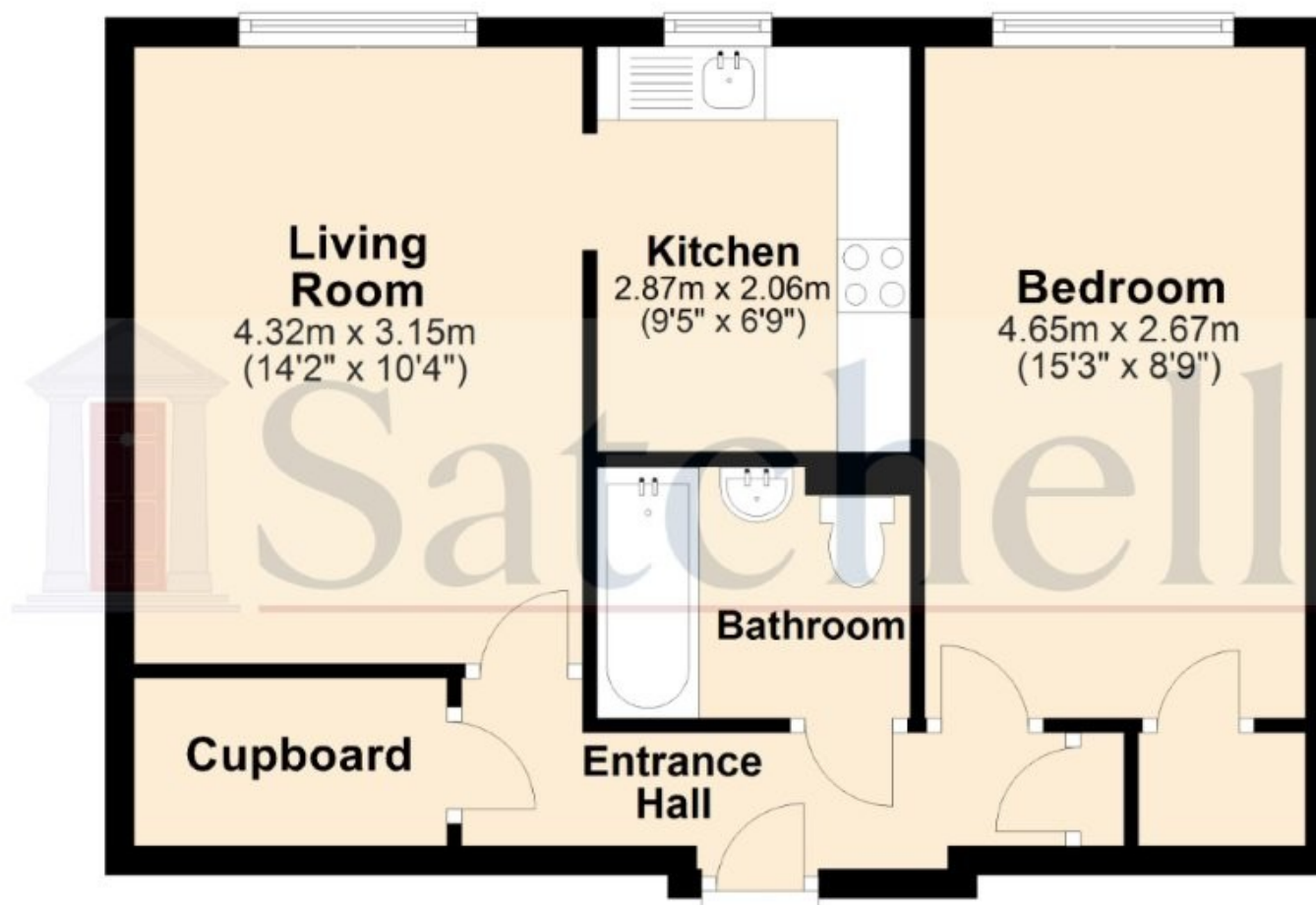
Additional Information:**Agents Note:**

Draft details yet to be approved by the vendor and maybe subject to change.



These particulars are a guide only and do not constitute an offer or a contract. The floor plan is for identification purposes only and not to scale. All measurements are approximate and should not be relied upon if ordering furniture, white goods and flooring etc. We have presented the property as we feel fairly describes it but before arranging a viewing or deciding to buy, should there be anything specific you would like to know about the property please enquire. Satchells have not tested any of the appliances or carried out any form of survey and advise you to carry out your own investigations on the state, condition, structure, services, title, tenure, and council tax band of the property. Some images may have been enhanced and the contents shown may not be included in the sale. Satchells routinely refer to 3rd party services for which we receive an income from their fee. If you would like us to refer you to one of these services please ask one of our staff who will pass your details on. We advise you check the availability of the property on the day of your viewing.

Top Floor



For illustration purposes only - NOT TO SCALE - Measurements shown are approximate.
The size and position of doors, windows, appliances and other features are approximate.
Plan produced using PlanUp.