



GB





**20 Courtfield Road, Ashford, Surrey TW15 1JR**  
**£525,000 - Freehold**





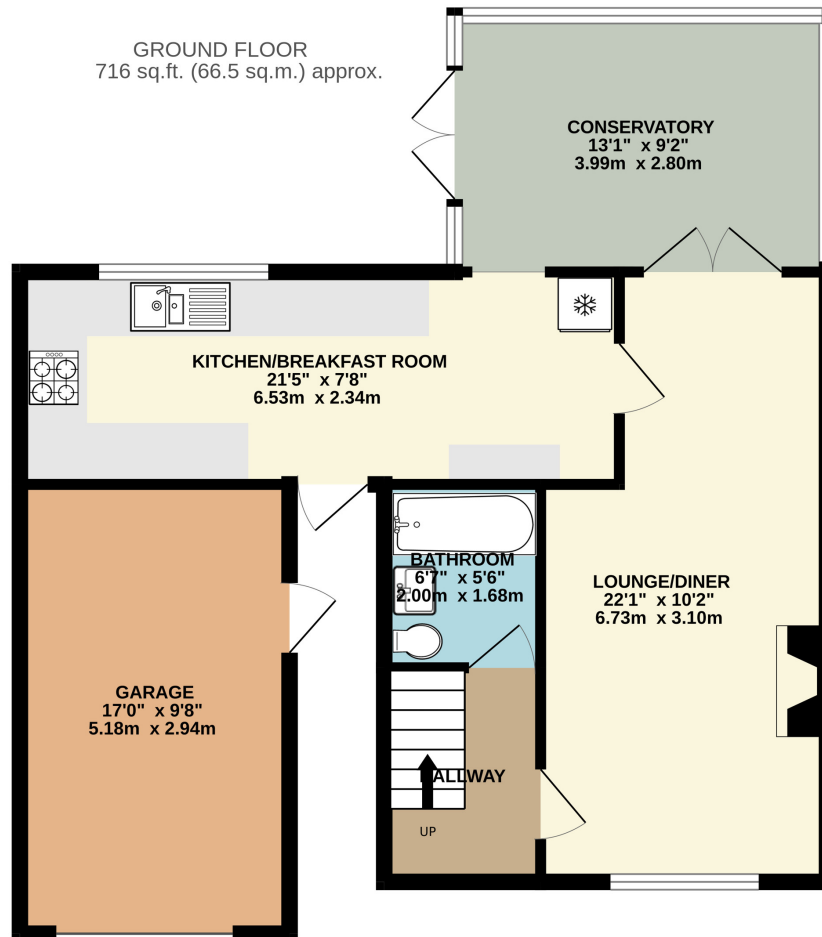
## PROPERTY DESCRIPTION

Gregory Brown are pleased to present this three bedroom semi detached house situated in this highly popular location within easy walking distance to schools, shops and buses, the property has been extremely well maintained and is presented in excellent order throughout. The property has been extended to enhance the living accommodation and comprises of an entrance hall, spacious lounge/dining room, kitchen/breakfast room, good size conservatory, downstairs family bathroom, three bedrooms upstairs with an ensuite WC to the master bedroom. There is own drive to a garage and off road parking and an enclosed patio garden. Viewings are strongly recommended.

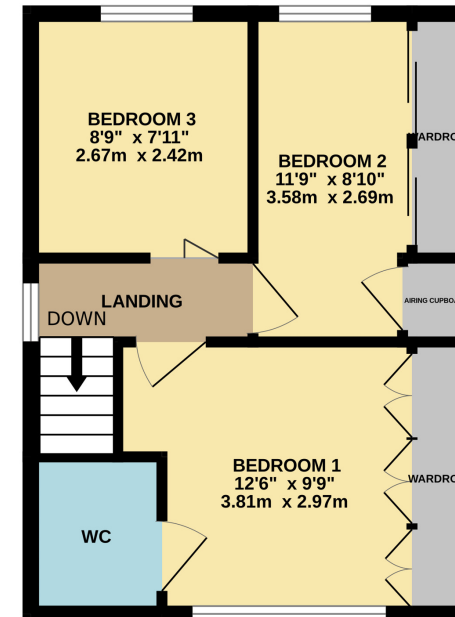
## POINTS OF INTEREST

- Popular cul-de-sac location
- Superbly presented throughout
- Spacious lounge/dining room
- Large Conservatory
- Semi detached family home
- Own drive to garage and off road parking
- Walking distance to local schools and buses
- Viewing highly recommended





**1ST FLOOR**  
338 sq.ft. (31.4 sq.m.) approx.



TOTAL FLOOR AREA : 1053 sq.ft. (97.9 sq.m.) approx.

Whilst every attempt has been made to ensure the accuracy of the floorplan contained here, measurements of doors, windows, rooms and any other items are approximate and no responsibility is taken for any error, omission or mis-statement. This plan is for illustrative purposes only and should be used as such by any prospective purchaser. The services, systems and appliances shown have not been tested and no guarantee as to their operability or efficiency can be given.

Made with Metropix ©2025