



**Coming
soon**

**Coming
soon**

Plot 1 Hole Lane, Bentley, Farnham, Hampshire. GU10 5LP.
Guide Price £699,950

- Luxuriously refurbished bungalow
- Vaulted ceiling
- Stylish kitchen/dining area
- Private rear garden
- Semi-detached
- 3 spacious bedrooms
- Extended living space
- Gorgeous family bathroom
- Driveway parking (side)
- 10 Year Structural Warranty via ICW

Description

*** Formal Viewing Day TBC For Early February *** Luxuriously Refurbished Semi-Detached Bungalow in Bentley. A rare opportunity to own this beautifully refurbished and extended semi-detached bungalow, combining modern luxury with thoughtful design. Step inside to discover a spacious living area with vaulted ceilings, creating a bright and airy atmosphere. The gorgeous family bathroom is stylishly appointed, while the kitchen and dining spaces have been thoughtfully extended to offer both practicality and elegance. There are three well-proportioned bedrooms, perfect for families or downsizers, complemented by a private rear garden and driveway parking to the side for two cars. Every detail has been carefully considered, making this a home ready to enjoy from day one. Air Source Heat pump serves the heating and hot water.

Directions

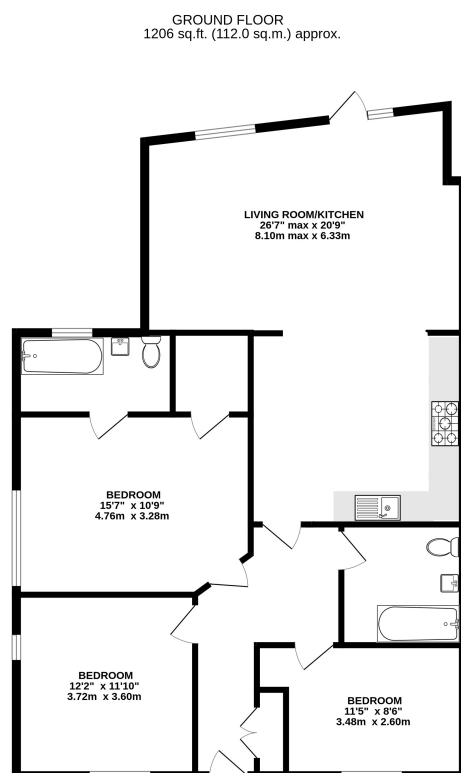
SAT NAV - GU10 5LP

Tenure

FREEHOLD

Local Authority

East Hampshire
Band F



TOTAL FLOOR AREA: 1206 sq.ft. (112.0 sq.m.) approx.
Whilst every attempt has been made to ensure the accuracy of the floorplan contained here, measurements of doors, windows, stairs and any other items are approximate and no responsibility is taken for any error, omission or mis-statement. This plan is for illustrative purposes only and should be used as such by any prospective purchaser. The services, systems and appliances shown have not been tested and no guarantee as to their operability or efficiency can be given.
Made with Metropix 12/2024

For clarification we wish to inform prospective purchasers/tenants that we have prepared these sales particulars as a general guide. We have not carried out a detailed survey or tested the services, appliances and specific fittings.