



**Railway View
Aiskew
Bedale
North Yorkshire
DL8 1FE**

Offers In Excess Of £345,000

bettermove

Railway View

Bedale

Bettermove are proud to present this 4 bedroom detached house in Bedale.

The property benefits from double glazing, gas central heating throughout and has off street parking available.

The council tax band is E.

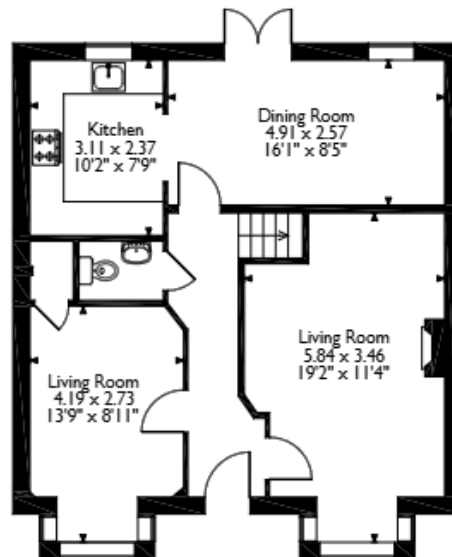
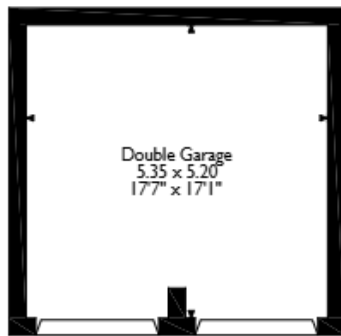
The interior of this beautifully presented property comprises two spacious living rooms, dining room, w/c and fitted kitchen on the ground floor. The first floor consists of 4 bedrooms, en-suite and the family bathroom. The exterior boasts a private rear garden, perfect for enjoying the summer months.

Located in the popular town of Bedale, the property is close to a range of amenities, including shops, supermarkets, restaurants and pubs. Excellent transport connections can be found from the A1(M) and local bus routes.

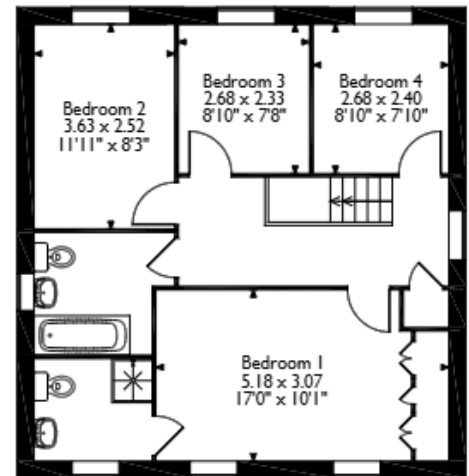
This exciting opportunity should not be missed. All enquiries can be made through Bettermove.



Railway View, Aiskew, Bedale
 Approximate Gross Internal Area
 Main House = 116 Sq M/1249 Sq Ft
 Double Garage = 28 Sq M/301 Sq Ft
 Total = 144 Sq M/1550 Sq Ft



Ground Floor



First Floor

Please note that the location of doors, windows and other items are approximate and this floorplan is to be used for illustrative purposes only. Unauthorized reproduction is prohibited.



20-22 Bridge End, Leeds, LS1 4DJ
t: 0330 004 0050 e: hello@bettermove.co.uk
www.bettermove.co.uk