



NORTHWOOD, BYWOOD CLOSE, KENLEY, CR8

HOUND & PORTER

FIND A HOUSE. MAKE IT HOME

NORTHWOOD, BYWOOD CLOSE, KENLEY, CR8

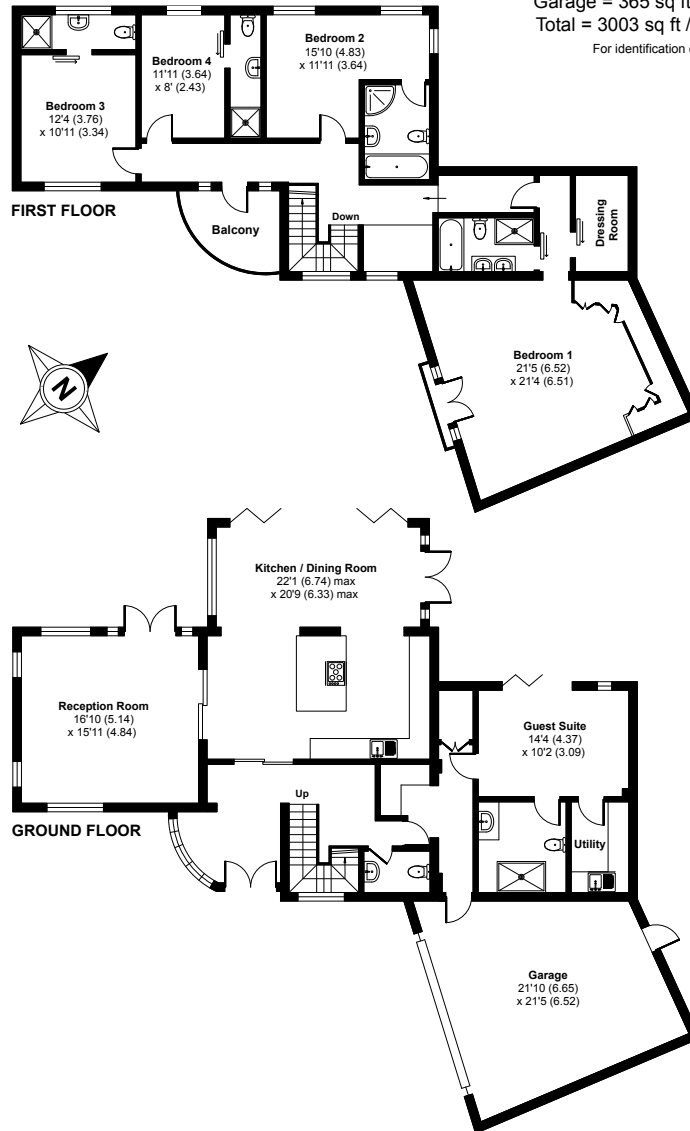


- Five great double bedrooms
- Modern open plan living
- Five luxury fitted ensuite bath/shower rooms
- Hydro pool and garden office
- Large double garage
- Private parking for numerous cars

# NORTHWOOD, BYWOOD CLOSE, KENLEY, CR8

## Northwood, Bywood Close, Kenley, CR8

Approximate Area = 2638 sq ft / 245 sq m  
Garage = 365 sq ft / 33.9 sq m  
Total = 3003 sq ft / 278.9 sq m  
For identification only - Not to scale

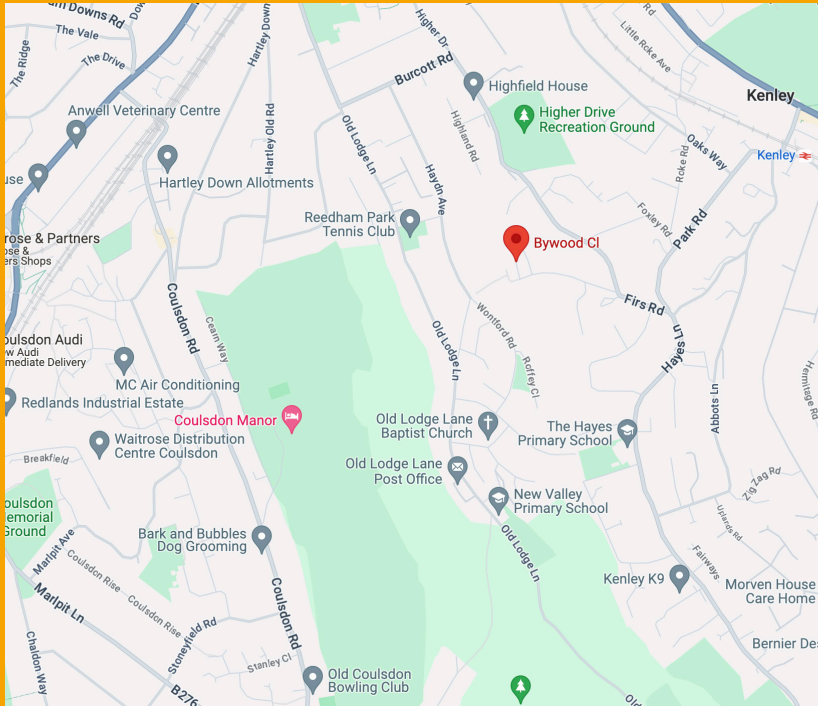


Welcome to “Northwood”, an impressive modern home substantially extended and renovated by our current owners. No expense has been spared with a hydro pool, landscaped grounds, an extensive home entertainment system, just to mention a few. Step over the threshold into an impressive reception hall with winding wooden staircase to the first floor and Italian tiled flooring. The bright and airy kitchen/dining room has been personally designed for entertaining with a range of Bosch integrated appliances, ample worksurface for the budding chef and a central monolith island with breakfast bar and underfloor heating. All appliances can be operated by the “connect” smart app.

There is a really good size living room with French doors to the garden, a home office, utility room, cloak room and guest suite with a beautiful ensuite wet room and bi-fold doors to the garden. Off the first-floor landing is a huge master suite with walk in wardrobes, ensuite with tv as well as a Jacuzzi bath and a pretty Juliet balcony. There are a further three double bedrooms, all with ensuites. The outside consists of a professionally landscaped rear garden, including a state-of-the-art Hydro pool/hot tub, kitchen area, space for the children to play and a home office. With a large double garage for two cars and plenty of private parking, this could be your dream home.



## NORTHWOOD, BYWOOD CLOSE, KENLEY, CR8



### LOCATION

The property is located roughly 0.8 miles to Kenley Station with provides direct access into London in just 39 minutes or a 3-minute stop to Purley Station which gets you to London Bridge within 20 minutes. The local schools include Harris Primary Academy (Outstanding), Beaumont Primary (Outstanding) and The Hayes Primary (Good) which are all located within 0.5 miles as well as Oasis Academy Byron and Riddlesdown Colligate (both outstanding) also within proximity. In addition, there are multiple private schools including Caterham School and Whitgift as well as grammar schools including Wallington boys/girls and Wilsons.

### ADDITIONAL INFORMATION

Within easy reach of the A25, M23, M25 and Gatwick Airport with a bus service providing access to Purley, Caterham, and Gatwick  
DISTANCE TO STATION FROM PROPERTY BY ROAD • 0.8 of a mile to Kenley Station • 1.6 miles to Purley Station



### DID YOU LIKE WHAT YOU'VE JUST SEEN?

Get in touch. We are more than happy to arrange a viewing, assist you with the complicated paperwork and find you the best local businesses to help during and after your move. We look forward to hearing from you.

58 Castle Walk  
Reigate, Surrey  
RH2 9PX

01737 317880  
hello@houndandporter.co.uk