

FOR SALE

Wendell Mews,
Shepherd's Bush, W12

Terraced House
Askew Village

£800,000 sh of fh

3  3  1 

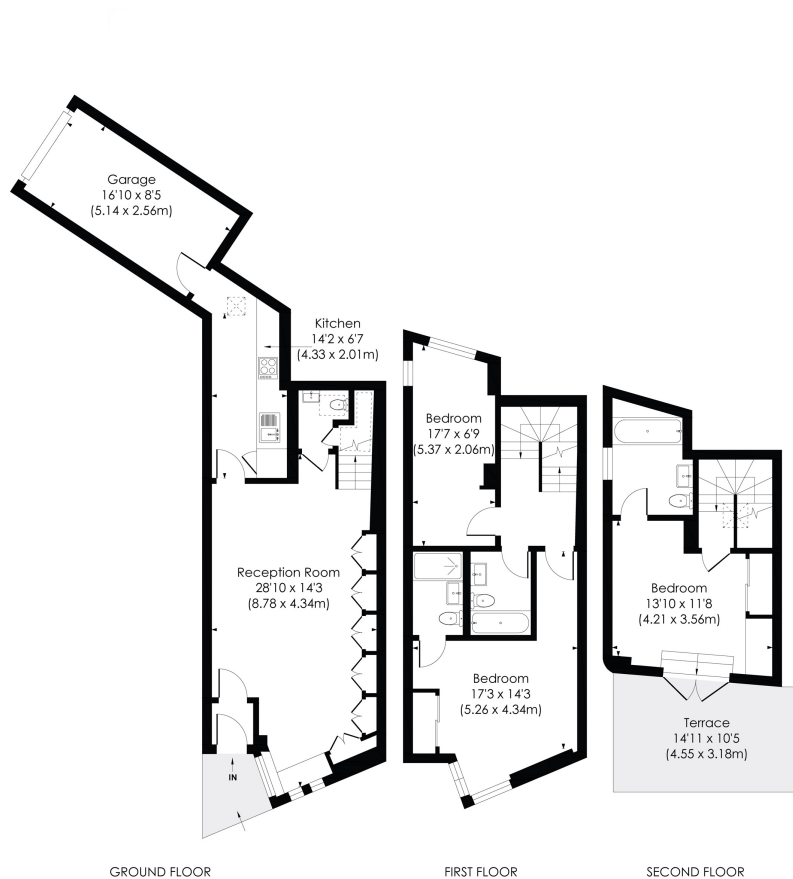


**horton
andgarton**

SALES / LETTINGS / PROPERTY MANAGEMENT

hortonandgarton.co.uk | Sales 020 8819 0510 | Lettings 020 8819 0511
172 King Street, Hammersmith, W6 0QU





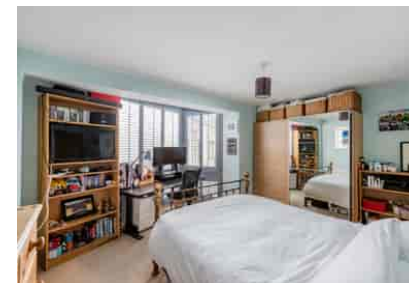
WENDELL MEWS, W12

Approx. Gross Internal Floor Area
1398 Sq' / 129.88 SqM (Including Garage)

**horton
and garton**

© Pixangle Property Marketing Ltd. info@pixangle.com Tel: 0208 870 2118

This floor plan has been prepared for the purpose of illustration only in accordance with the latest RICS code of measuring practice and is not to scale. All measurements and areas are approximate and whilst every effort has been made to ensure the accuracy of the plan contained here, no responsibility is taken for any error, omission or misstatement.



Three storey mews house | Three bedrooms - Three bathrooms | 1398 Sq' – 129.88 SqM | Garage | EPC rating C | Wendell Park | Well maintained development | private terrace



hortonandgarton.co.uk
Sales 020 8819 0510
Lettings 020 8819 0511

172 King Street, Hammersmith, W6 0QU