

FOR SALE

Askew Road,
Shepherd's Bush, W12

Flat
Askew Village

£450,000 lh

2  1  1 

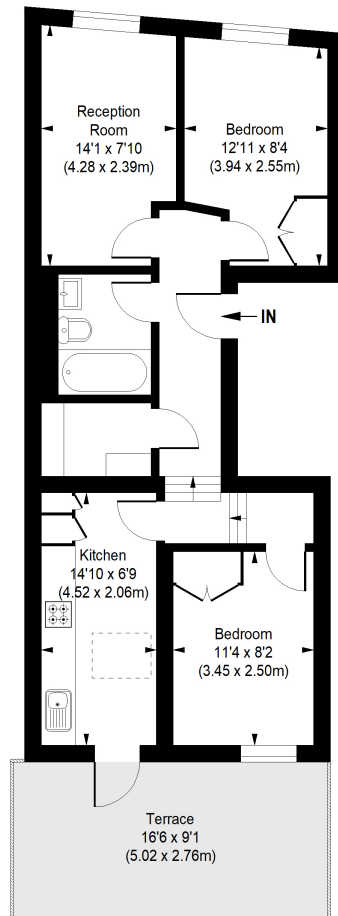


**horton
andgarton**

SALES / LETTINGS / PROPERTY MANAGEMENT

hortonandgarton.co.uk | Sales 020 8819 0510 | Lettings 020 8819 0511
172 King Street, Hammersmith, W6 0QU





GROUND FLOOR



ASKEW ROAD, W12

APPROXIMATE GROSS INTERNAL AREA

599 Sq' / 55.65 SqM



Not to scale, for guidance only and must not be relied upon as a statement of fact.
All measurements and areas are approximate only



Victorian first floor flat | Turnkey presentation | 599 Sq'
- 55.65 SqM | EPC rating C | Two bedrooms - One
bathroom | Askew Village



hortonandgarton.co.uk

Sales 020 8819 0510

Lettings 020 8819 0511

172 King Street, Hammersmith, W6 0QU