

REDUCED



16 Salisbury Walk, Carlton-in-Lindrick, Worksop, Nottinghamshire S81 9HY

£120,000 - Freehold



78, Bridge Street, Worksop, S80 1JA 01909 509001 info@bartropanddilks.co.uk

PROPERTY SUMMARY

Of possible interest for first time buyers with an internal inspection being highly recommended is this well presented and decorated three bedroom town house that has gas central heating and uPVC double glazed windows. Having a high standard of fixtures and fittings, the property accommodation comprises of; entrance porch, lobby, lounge, excellent fitted dining kitchen with a good range of fitted units, rear lobby and W.C. On the first floor; landing, three bedrooms, white fitted bathroom suite with separate W.C. Outside; front garden with extensive decking and enclosed rear with additional decked area, garage. Viewing advised.

POINTS OF INTEREST

- *Of Interest FTB's*
- *Well Decorated & Presented*
- *High Quality Fixtures and Fittings*
- *Three Bedroom*
- *Town House*
- *GFCH and uPVC DG*
- *Garage*
- *Inspection Highly Recommended*
- *Well Fitted Kitchen*
- *Downstairs W.C*



ROOM DESCRIPTIONS

Ground Floor

Entrance Porch

With entrance door, door to the lobby.

Lobby

With stairs to the first floor.

Lounge 6.00m x 3.33m (19' 8" x 10' 11")

With front and rear facing windows, central heating radiator.

Dining Kitchen 6.00m x 2.92m (19' 8" x 9' 7")

An excellent fitted dining kitchen with wall and base fitted units, worksurfaces, range cooker with 8 ring gas hob, double oven and grill, plumbing for an automatic washing machine, front and rear facing windows, central heating radiator.

Rear Lobby

With door to the rear garden, understairs storage.

W.C

With a low flush w.c, wash hand basin, tiled floor, rear window.

First Floor

Landing

With loft access, storage cupboard.

Bedroom One 4.22m x 2.97m (13' 10" x 9' 9")

With a front facing window, central heating radiator.

Bedroom Two 3.32m x 3.31m (10' 11" x 10' 10")

With a storage cupboard, front facing window, central heating radiator.

Bedroom Three 2.63m x 2.44m (8' 8" x 8' 0")

With a rear facing window, central heating radiator.

Bathroom

White modern suite with panelled bath and electric shower above, wash hand basin rear facing window, central heating radiator, tiling.

W.C

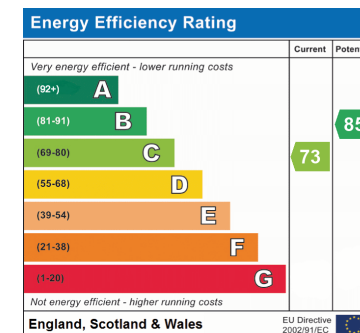
With a low flush W.C, rear facing window.

Outside

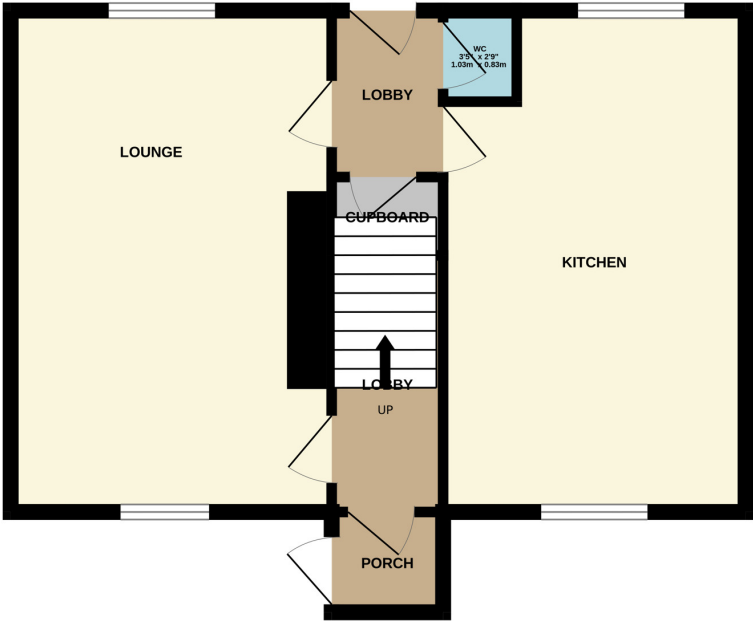
Gardens

Enclosed front and rear gardens, both with decking. The rear with two outhouses.

Garage



GROUND FLOOR



1ST FLOOR

