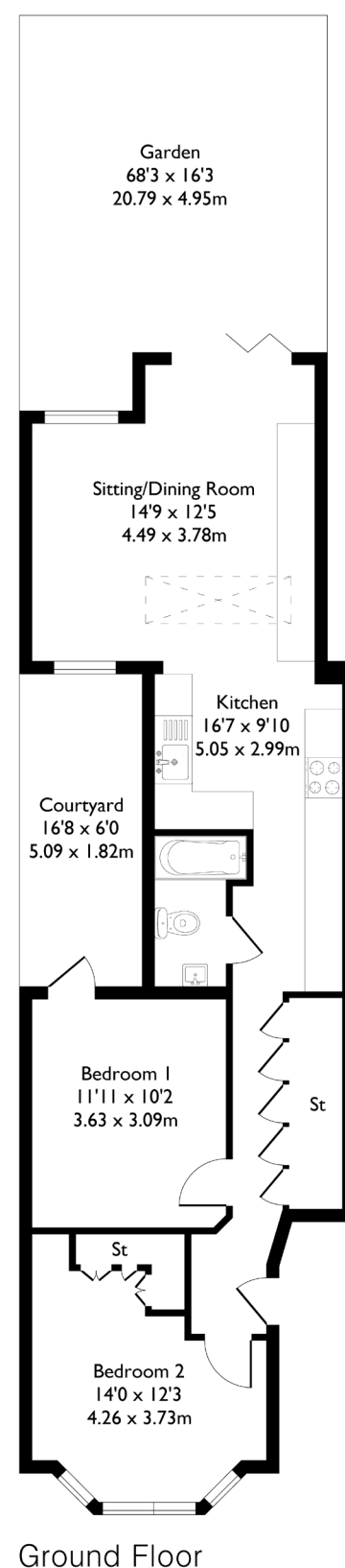
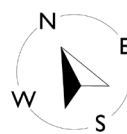


Church Road, London, W7

Approximate Floor Area = 68.4 sq m / 737 sq ft



2 BEDROOM FLAT

Church Road, W7

£575,000

Welcome to this well-presented ground-floor garden flat in the heart of Hanwell, offering two double bedrooms and one bathroom. Recently renovated, the property is filled with natural light, provides ample storage, integrated appliances and is ready to move straight into with its turnkey presentation.

FEATURES

- Two Bedrooms
- One Bathroom
- Open Plan Kitchen & Living
- Private Garden
- Newly Refurbished
- Hanwell Station (Elizabeth Line)
- EPC Rating C



2 BEDROOM FLAT

Church Road, W7

One bedroom opens onto a private courtyard, while the other features a beautiful bay window.

Perfectly located, the flat is just moments from Hanwell Station (Elizabeth Line) and falls within the catchment area for Drayton Manor High School, Hobbayne Primary School, and other well-regarded schools. EPC Rating C.

