



THE ESTATE AGENTS
1977

Edgemont Road, Northampton NN3 3DF

Edgemont Road

Northampton

NN3 3DF

The Estate Agents are proud to present this stunning, four bedroom, detached property occupying a generous plot on the exclusive and highly sought after Edgemont Rd. The spacious accommodation has been completely renovated by the current owners, to a very high standard and with a fantastic eye for detail.

- Stunning Four Bedroom Detached Property Occupying A Fantastic Plot
- Highly Desirable And Sought After Area
- Fully Renovated To A High Standard
- Master Bedroom With Juliette Balcony, Dressing Room And En Suite
- Beautiful Island Kitchen/Dining Room
- Double Garage And Ample Off Road Parking
- Large Triple Aspect Living Room
- Landscaped Gardens Offering A Great Degree Of Privacy
- Ground Floor Shower Room
- Approx. 2257 Sq. Ft





The Accommodation briefly comprises; entrance porch leading to a spacious and welcoming entrance hall with ample storage, a large triple aspect living room, beautiful fitted island kitchen/dining room, separate sitting room, utility, boot room and beautifully appointed shower room.

On the first floor there's an amazing modern four piece bathroom suite, four double bedrooms all with fitted wardrobes and the master suite having French doors opening to a Juliette balcony, large dressing room with fitted furniture and en suite again beautifully appointed.

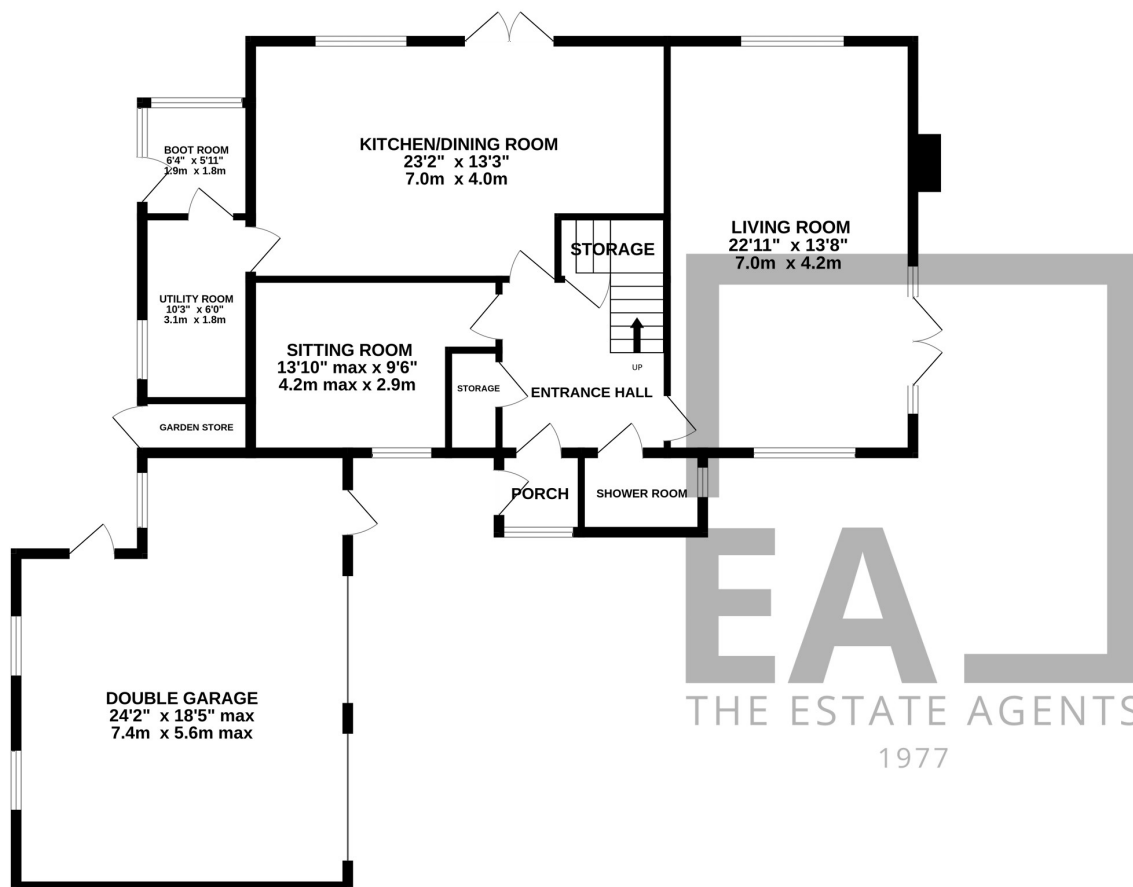




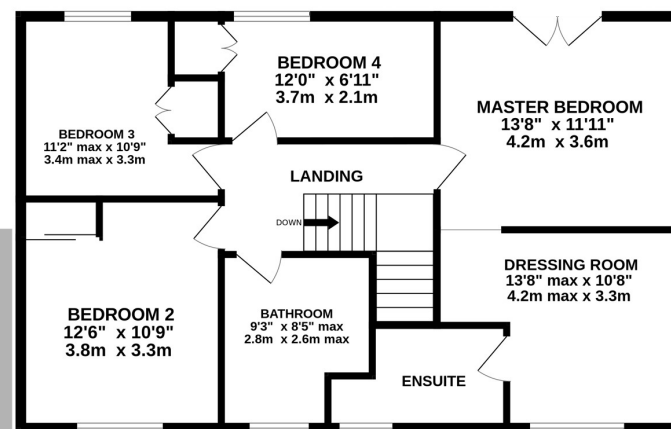
Outside the property sits on a desirable plot, the front is mainly laid to lawned and planting areas with a large block paved drive offering ample off road parking and leading to a large double garage with workshop area. The rear and sides of the property are private with landscaped gardens having a mixture of lawned and patio areas with planting borders.



GROUND FLOOR
1415 sq.ft. (131.4 sq.m.) approx.



1ST FLOOR
842 sq.ft. (78.2 sq.m.) approx.



TOTAL FLOOR AREA : 2257 sq.ft. (209.7 sq.m.) approx.

Whilst every attempt has been made to ensure the accuracy of the floorplan contained here, measurements of doors, windows, rooms and any other items are approximate and no responsibility is taken for any error, omission or mis-statement. This plan is for illustrative purposes only and should be used as such by any prospective purchaser. The services, systems and appliances shown have not been tested and no guarantee as to their operability or efficiency can be given.

Made with Metropix ©2025



Edgemont Road is located in the highly desirable and sought after area of Edgemont Grange. Situated within easy reach of Weston Favell Village, Northampton Town Centre, train station and a choice of primary and secondary schools. There's fantastic road links with the A43,A45 and M1, while Northampton train station has a regular service to London Euston in under an hour.





Suite 34 Burlington House 369 Wellingborough Road, Northampton, NN1 4EU

01604 215434

www.TheEstateAgents.uk