

2 Bedroom(s), Semi-Detached House, Freehold

Woodlea Grove, Armthorpe, Doncaster.



- 3D Virtual Tour Available
- Spacious Kitchen Diner
- Ground Floor W/C
- Family Bathroom
- Many Local Amenities, Transport Links and Schools

- Two Bedroom Semi Detached Home
- Lounge
- Driveway
- Rear Enclosed Garden and Summer House with Bar
- Popular Location In Armthorpe

£160,000
For Sale

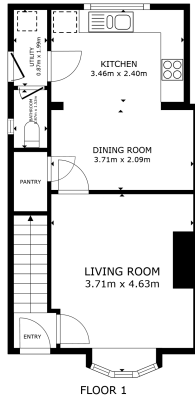
Book your viewing today Tel: 01302 247754

Owner's View

We want to highlight some things we love about this property, and somethings we will miss. Such as, the convenience of the local shops, restaurants and pubs all sitting within a 5 minute walk from this property. We also want to point out the lovely street and neighbours, they really are great people who live down here and we will miss the friendly interactions we have with everyone on a daily. This house has served us well and provides a great location to bus services to town centre, or lakeside, these are all a 10 minute drive away. We will miss this and hope someone can enjoy it as much as we have.

Ground Floor

Floor Plan



GROSS INTERNAL AREA
FLOOR 1: 41.5 m² FLOOR 2: 20.9 m²
TOTAL: 62.4 m²
SIZES AND DIMENSIONS ARE APPROXIMATE, ACTUAL MAY VARY

Matterport

Kitchen Diner



Lounge

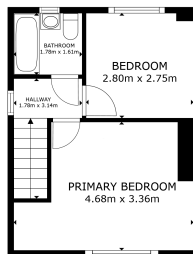


W/C



First Floor

Floor Plan



FLOOR 2

GROSS INTERNAL AREA
FLOOR 1: 45.12 sqm FLOOR 2: 29.9 sqm
TOTAL: 75.02 sqm
SIZES AND DIMENSIONS ARE APPROXIMATE, ACTUAL MAY VARY

Matterport

Master Bedroom



Bedroom



Family Bathroom



Externals

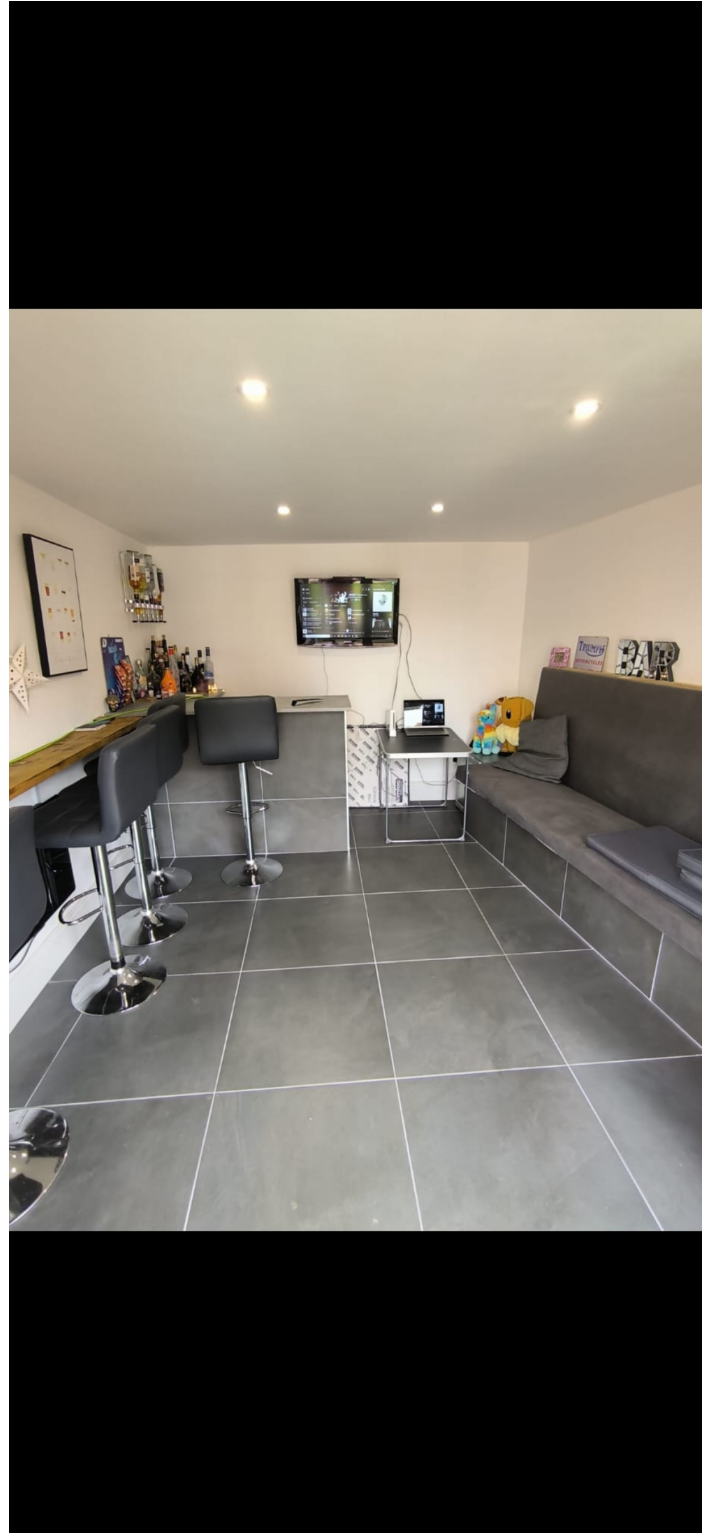
Front Aspect



Rear Garden



Bar



Property Information

Council Tax Band - A

Utilities - Mains Gas, Mains Electricity, Mains Water

Water Meter - Yes

Tenure - Freehold

Solar Panels - No

Space Heating System - Gas Boiler with radiators

Approximate Heating System Installation Date -

Water Heating System - Gas boiler (Combi)

Approximate Water Heating Installation Date -

Boiler Location - Downstairs in under-stairs cupboard

Approximate Electrical System Installation Date -

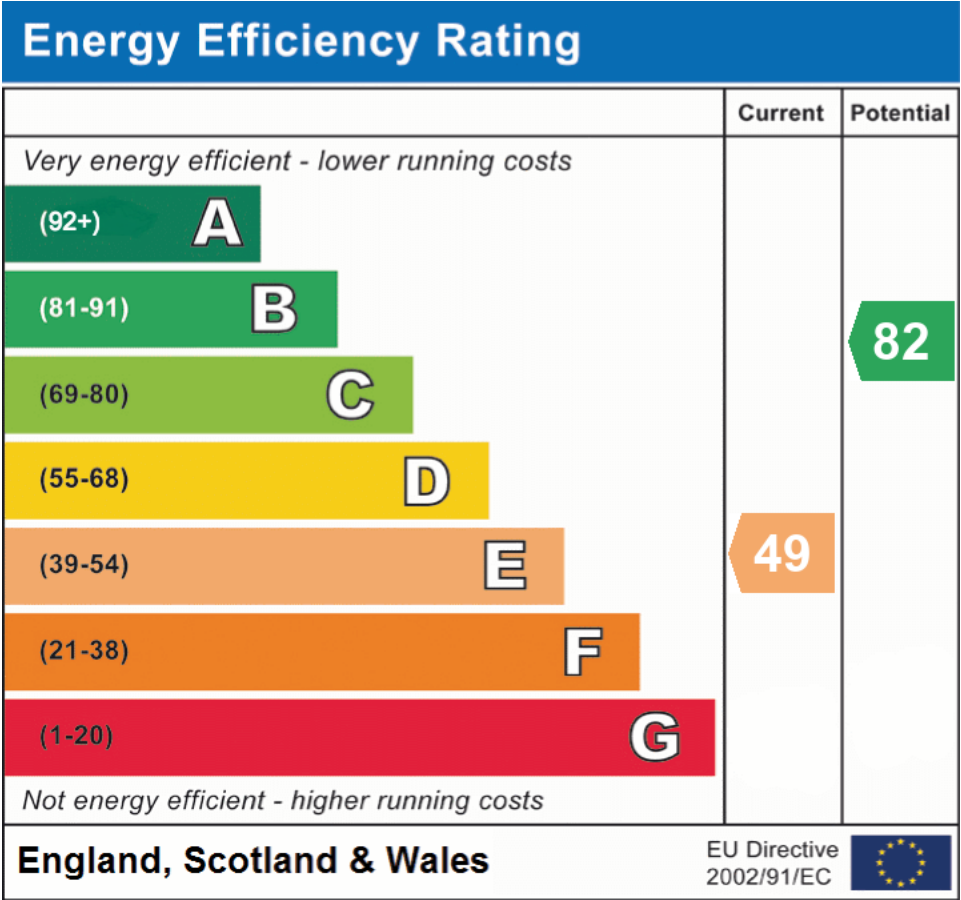
Permanent Loft Ladder - No

Loft Insulation - Yes

Loft Boarded out – Yes

Whilst every effort is made to ensure that the information contained in these particulars is reliable, they do not constitute or form part of an offer or any contract. The Property Hive accept no liability for the accuracy of the contents, and therefore they should be independently verified by prospective buyers or tenants before agreeing an offer. All measurements provided are approximate and should be verified before exchange of contracts. No appliances, fixtures or fittings have been tested and should be checked by the buyer before exchange of contracts to ensure they are in good working order.

Energy Performance Certificate



All measurements provided are approximate and should be verified before exchange of contracts. No appliances have been tested and should be checked to ensure they are in good working order.