



Set on a large plot, this four bedroom detached family home in need of modernisation provides spacious and flexible living accommodation. The ground floor features a bright and airy kitchen/breakfast room overlooking the garden, a spacious 22ft living/dining room with parquet flooring, a further reception room which could be used as a bedroom, and a three-piece shower room. To the first floor there are two double bedrooms, a single bedroom, a W.C and a family bathroom. The large rear garden is mainly laid to lawn with patio area. To the front there is driveway parking for multiple cars and a garage in addition to a front garden which could be paved if further parking is needed. This property is offered to the market with NO CHAIN and is an excellent family purchase due to its generous size and future potential to extend (STPP).

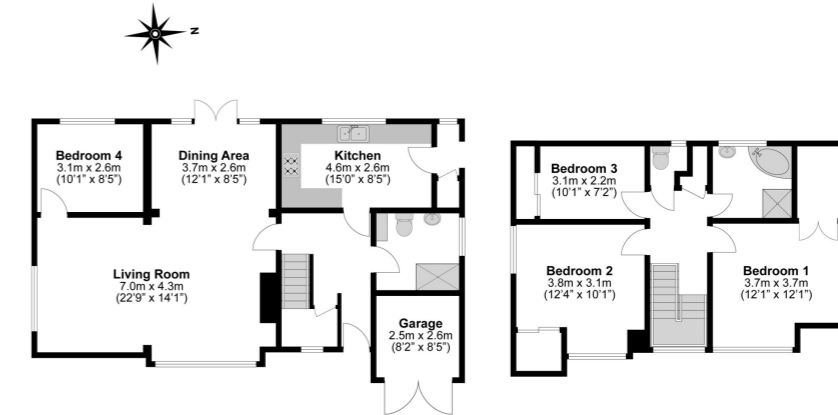


-  FOUR BED DETACHED PROPERTY
-  DRIVEWAY & GARAGE
-  22FT LIVING ROOM
-  LARGE FRONT AND REAR GARDEN
-  PRIVATE ROAD
-  LARGE PLOT
-  EPC - PENDING
-  POTENTIAL TO EXTEND (S.T.P.P)
-  COUNCIL TAX BAND - G
-  NO CHAIN



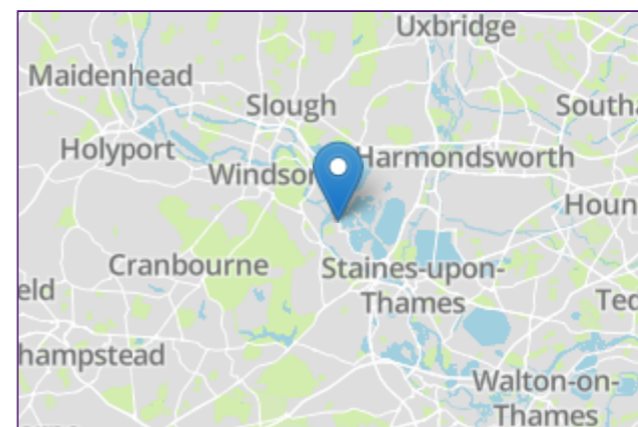
Total Approximate Floor Area
1593 Square feet
148 Square metres

					
x4	x2	x2	x4	Y	Y
Bedrooms	Reception Rooms	Bathrooms	Parking Spaces	Garden	Garage



Illustrations are for identification purposes only, measurements are approximate, not to scale.

Prospective purchasers should be aware that these sales particulars are intended as a general guide only and room sizes should not be relied upon for carpets or furnishing. We have not carried out any form of survey nor have we tested any appliance or services, mechanical or electrical. All maps are supplied by Goview.co.uk from Ordnance Survey mapping. Care has been taken in the preparation of these sales particulars, which are thought to be materially correct, although their accuracy is not guaranteed and they do not form part of any contract.



External

The property is located on a large plot, with front driveway and parking for multiple cars.

Transport Links

Nearest stations:

- Sunnymeads (0.9 miles)
- Wraybury (1.2 miles)
- Datchet (2.6 miles)

Schools

PRIMARY SCHOOLS:

- Wraybury Primary School
0.1 miles away
State school
- King's Court First School
5.2 miles away
State school
- St John's Beaumont School
5.1 mile away
Independent school
- St Peter's Church of England Middle School
5.1 miles away
State school

- Bishopsgate School
5.3 miles away
Independent school
- SECONDARY SCHOOLS:
St John's Beaumont School
5.1 mile away
Independent school
- St Peter's Church of England Middle School
5.1 miles away
State school
- Bishopsgate School
5.3 miles away
Independent school
- Churchmead Church of England (VA) School
2.7 miles away
State school
- St Peter's Centre
4.9 miles away
State school
- Council Tax**
Band G