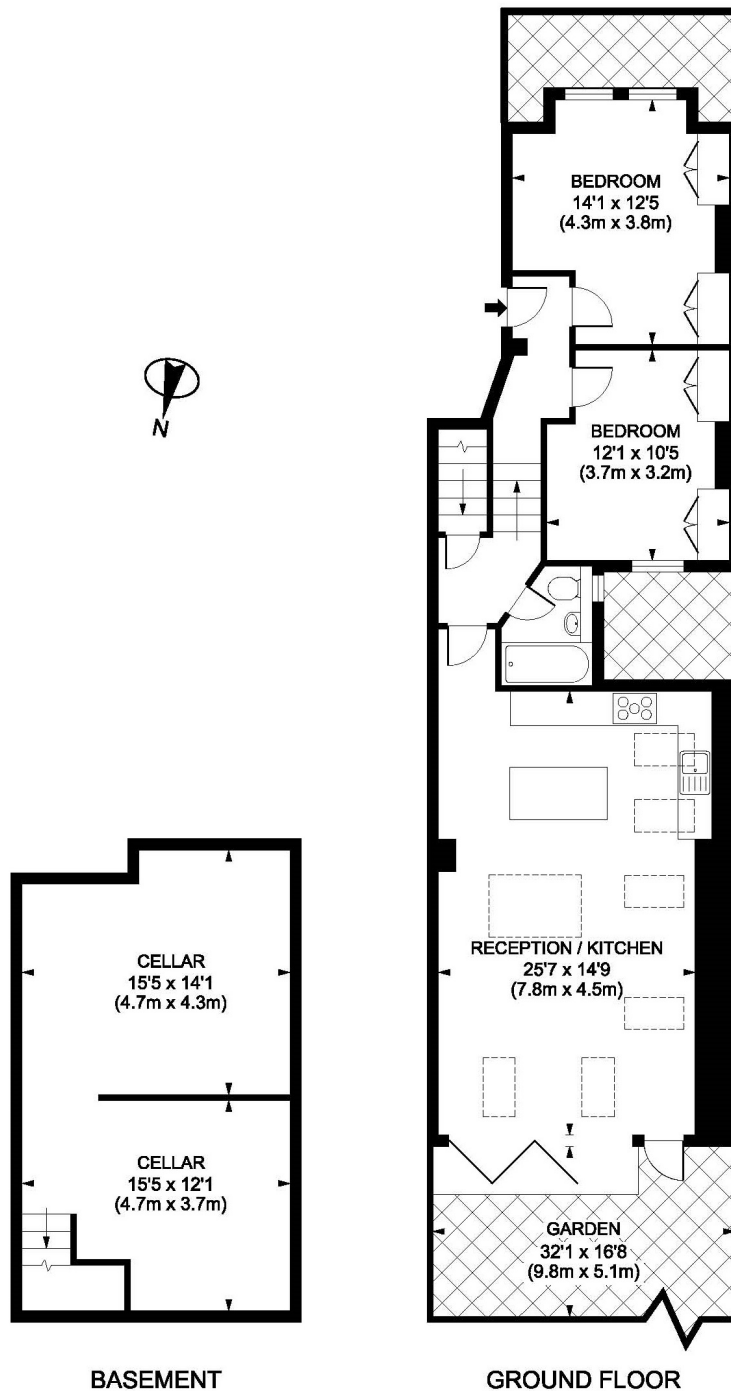




Honeywell Road
Between the Commons
SW11

TO LET

This beautiful recently refurbished and extended two-double-bedroom garden flat has a smart contemporary kitchen and bath/shower room, a sunny landscaped garden and a massive storage cellar. It occupies the whole ground floor of a converted and extended Victorian house in this prime position off fashionable Northcote Road and just yards from the hugely sought-after Honeywell Junior School.



BASEMENT

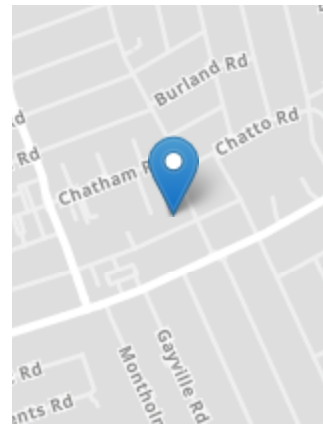
GROUND FLOOR

Honeywell Road, SW11
 Gross internal area 850 sq ft/79 sq metres (plus basement 398 sq ft/37 sq metres)
 ©photosandfloorplans.com



PROPERTY FEATURES

- Honeywell Catchment
- Victorian Property
- Garden Flat
- Huge Cellar
- Large Garden
- London Borough of Wandsworth
- Bath/Shower Room
- Reception / Kitchen
- Two Double Bedrooms
- 850 Sq Ft/79 Sq M + storage



Energy Efficiency Rating		Current	Potential
Very energy efficient - lower running costs	A		
	B		
	C		
	D		
	E		
	F		
Not energy efficient - higher running costs	G		
		71	76

England, Scotland & Wales

VIEWING BY APPOINTMENT ONLY

The particulars do not constitute part of an offer or contract: the particulars including text descriptions, photographs and plans are only for the guidance of prospective purchasers and must not be relied on as statements of fact: nothing in the particulars shall be deemed as a statement that the property is in good condition nor that any services or facilities are in good working order: measurements given are approximate: prior to viewing we recommend that you discuss particular points of interest with a staff member to avoid a wasted journey