



Guide Price £375,000 Leasehold

2 bedroom flat

Stainton Road
Catford

Read all about it...

This fantastic two-bedroom flat is situated on Stainton Road, a quiet residential street on the borders of Hither Green and Catford.

Set on the ground floor, the property features a modern kitchen and bright and spacious lounge to the rear and located off of the hallway is a three-piece bathroom, two storage cupboards- providing ample storage space, and two bedrooms with the primary bedroom featuring a large built-in wardrobe. The property also benefits from direct access to the communal garden

Stainton Road is ideally placed between Hither Green, Ladywell and Catford providing a variety of options from the village feel of Hither Green with the Station Hotel and Coffee Shops to the more bustling center in Catford with supermarkets and high street brands within close proximity. The property is also conveniently located just 0.5 miles from Hither Green Station, offering mainline services to Charing Cross & London Bridge and a short bus ride will provide access to the DLR at Lewisham. There are a number of local artisan bars and coffee shops around the area and the lovely Mountsfield Park with its community gardens, cafe and tennis court is at the top of the road.

Tenure: Leasehold | **Council Tax:** Lewisham Band C

GROUND FLOOR

Entrance Hall

Pendant light, radiator, storage cupboards, fitted carpet

Bedroom

9' 2" x 6' 11" (2.79m x 2.11m)

Pendant light, front facing double glazed window, radiator, fitted carpet

Bedroom

13' 10" x 8' 6" (4.22m x 2.59m)

Pendant light, front facing double glazed window, radiator, fitted wardrobe, fitted carpet

Living Room

23' 2" x 13' 0" (7.06m x 3.96m)

Spotlights, rear facing double glazed window, radiator, fitted carpet, doors to communal garden

Kitchen

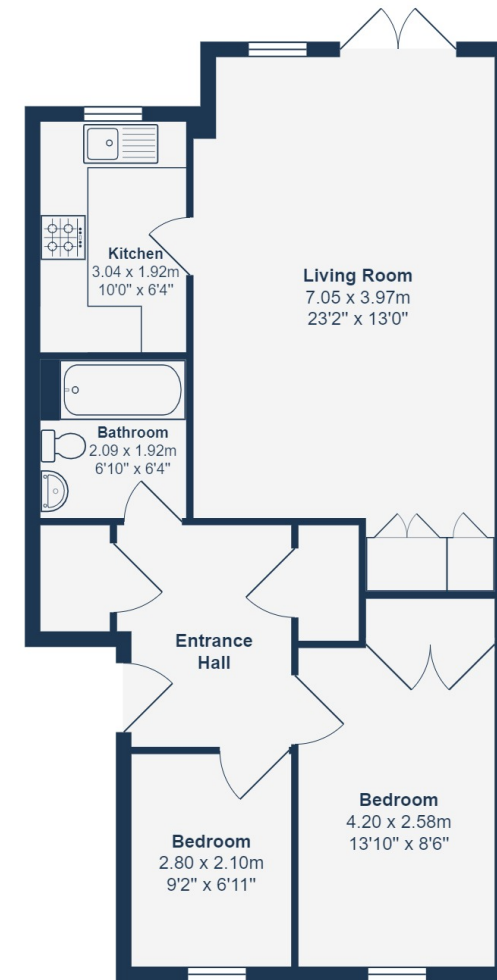
10' 0" x 6' 4" (3.05m x 1.93m)

Spotlights, rear facing double glazed windows, matching wall and base units, stainless steel sink with drainer and single mixer tap, tile splashback, integrated oven with gas hob, tile flooring

Bathroom

6' 10" x 6' 4" (2.08m x 1.93m)

Spotlights, freestanding wash basin, panel enclosed bath/shower, W/C, wood flooring



Ground Floor

Total Area: 64.5 m² ... 694 ft²

Drawn for Stanfords Sales & Lettings
This floorplan is for illustrative purposes only. Whilst every effort has been made to ensure the accuracy of the plan, the dimensions and total area are approximated only and should not be relied upon.

Like what you see?

Call 020 8690 3656 or email us at catford@stanfordstates.london
to arrange a viewing or request further information

www.stanfordstates.london

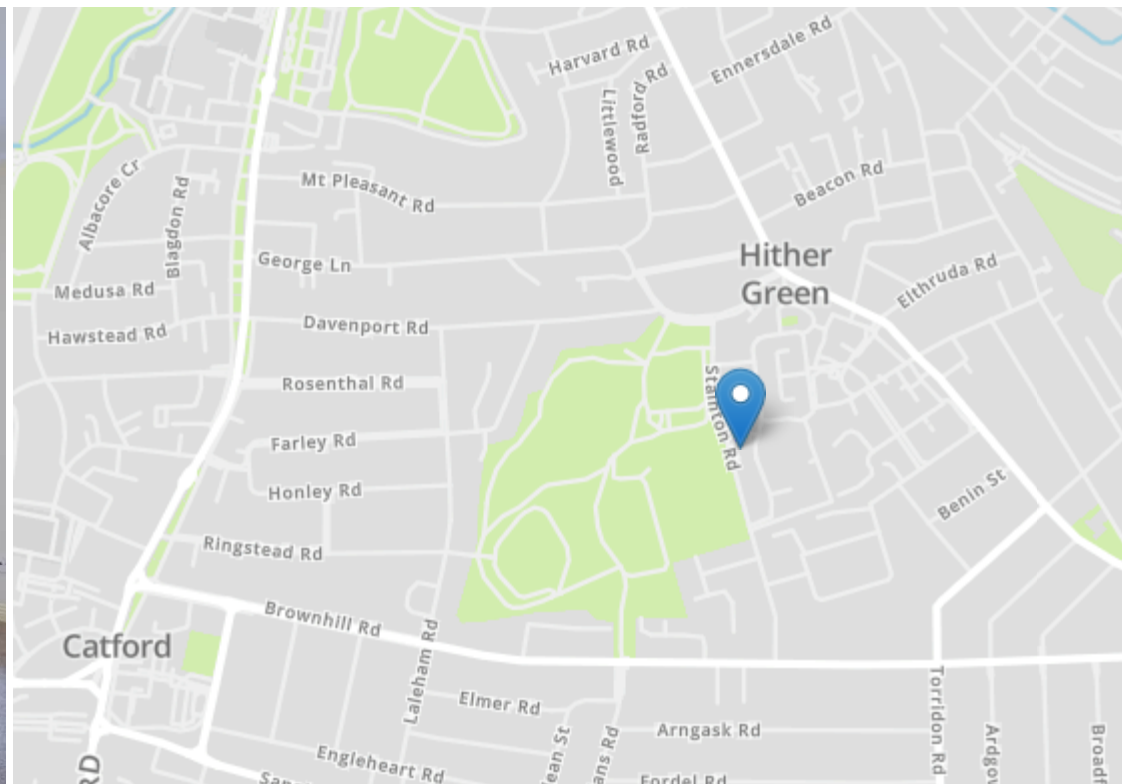


2 BED GROUND FLOOR FLAT
PARKING SPACE
OPPOSITE MOUNTSFIELD PARK



DIRECT ACCESS TO COMMUNAL
GARDENS
TOTAL AREA: 694SQFT.
0.5MI TO HITHER GREEN STATION





Robert Stanford Estates property particulars are produced in accordance with the Consumer Rights Act (2015) and should not be construed as a contract or offer. The contents of these property particulars are to provide a general illustration only and are inconsequential to any decisions to purchase a property. A potential buyer accepts that all representations made by these particulars are made in good faith on behalf of the seller and require verification by a buyers' legal and professional representatives prior to an exchange of contracts. We offer no guarantees for any structural component, service or appliance and while we make every effort to take accurate measurements and distances, they are illustrative only. Any reliance you place on information within these particulars is therefore strictly at your own risk.