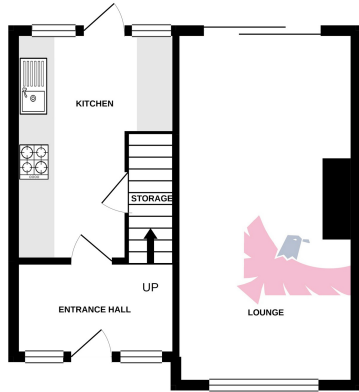


GROUND FLOOR  
353 sq.ft. (32.8 sq.m.) approx.



1ST FLOOR  
360 sq.ft. (33.5 sq.m.) approx.



TOTAL FLOOR AREA: 714 sq.ft. (66.3 sq.m.) approx.

Whilst every attempt has been made to ensure the accuracy of the floorplan contained here, measurements of doors, windows, rooms and any other items are approximate and no responsibility is taken for any error, omission or mis-statement. This plan is for illustrative purposes only and should be used as such by any prospective purchaser. The services, systems and appliances shown have not been tested and no guarantee as to their operability or efficiency can be given.  
Made with Metropix ©2021



## Nelson Road, Rainham

**£365,000**

- THREE BEDROOMS TERRACED HOUSE
- WELL MAINTAINED & PRESENTED THROUGHOUT
- 19' RECEPTION ROOM
- 66' (APPROX) LANDSCAPED REAR GARDEN
- POPULAR ROAD CLOSE TO AMENITIES & SCHOOLS
- EASY ACCESS TO STATION, A13 & M25
- OFF STREET PARKING FOR TWO CARS
- IDEAL FIRST TIME BUY



Appointments to view and offers to purchase must be made through Patterson Hawthorn. These particulars are produced for guidance only and do not form any part of an offer or Contract. These particulars, whilst believed to be accurate are to be used for guidance only and do not constitute any part of an offer or contract. Intending purchasers should not rely on them as statements of representation of fact, but must satisfy themselves by inspection or otherwise as to their accuracy. No person in the employment of Patterson Hawthorn has the authority to make or give any representation or warranty in respect of the property. Patterson Hawthorn have not tested any services or appliances in the property, prospective purchasers should satisfy themselves with regard to the working order of these.





## **GROUND FLOOR**

### **Front Entrance**

Via uPVC door opening into:

### **Hallway**

Opaque double glazed windows to front, laminate flooring, stairs to 1st floor.

### **Reception Room**

6.03m x 3.02m (19' 9" x 9' 11") Inset spotlights to ceiling, double glazed windows to front, radiator, uPVC framed sliding doors to rear opening into rear garden.

### **Kitchen**

3.92m x 2.72m (12' 10" x 8' 11") > 1.8m (5' 11") Inset spotlights to ceiling, double glazed windows to rear, a range of matching wall and base units, laminate work surfaces, one and half bowl inset sink and drainer with chrome mixer tap, integrated oven, four ringed gas hob, extractor hood, space and plumbing for dishwasher, space and plumbing for washing machine, space for freestanding fridge freezer, built in under-stairs storage cupboard, tiled splash backs, laminate flooring, uPVC door to rear opening onto rear garden.



## **FIRST FLOOR**

### **Landing**

Loft hatch to ceiling with integral step ladder leading to part boarded loft, fitted carpet.

### **Bedroom One**

3.52m x 3.17m (11' 7" x 10' 5") Into fitted wardrobes, double glazed windows to front, radiator, fitted wardrobes, fitted carpet.

### **Bedroom Two**

2.78m x 2.59m (9' 1" x 8' 6") > 2.14m (7' 0") Double glazed windows to rear, radiator, fitted carpet.

### **Bedroom Three**

3.46m > 2.85m (11' 4" > 9' 4") x 2.27m (7' 5") Into fitted wardrobes, double glazed windows to front, radiator, fitted wardrobes, fitted carpet.

### **Bathroom**

2.61m x 1.62m (8' 7" x 5' 4") > 0.68m (2' 3") Opaque double glazed windows to rear, panelled bath, shower, hand wash basin, chrome hand towel radiator, tiled walls, tile effect vinyl flooring.

### **Separate WC**

1.45m x 0.81m (4' 9" x 2' 8") Opaque double glazed windows to rear, low level flush WC, tiled walls, tile effect vinyl flooring.

## **EXTERIOR**

### **Rear Garden**

Approximately 66ft - Mostly paved with artificial grass area to centre, plastic shed, brick pond.

### **Front Exterior**

Fully paved giving off street parking for two vehicles.