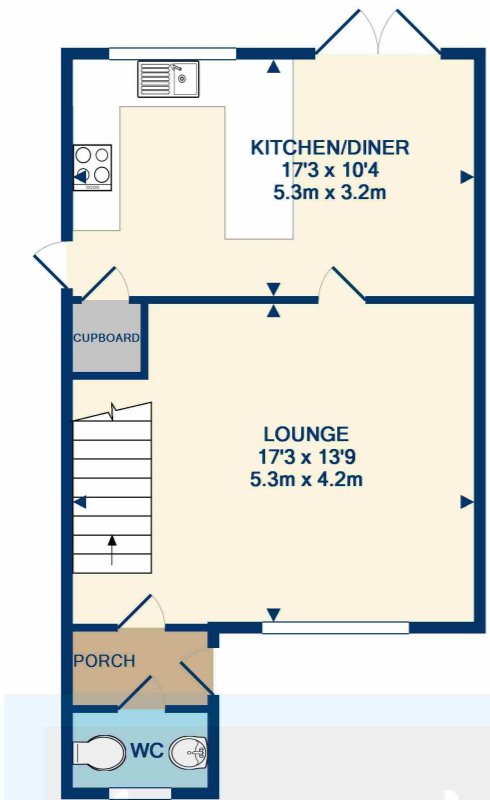


Rembrandt Grove, Springfield, Chelmsford, Essex, CM1 6GH

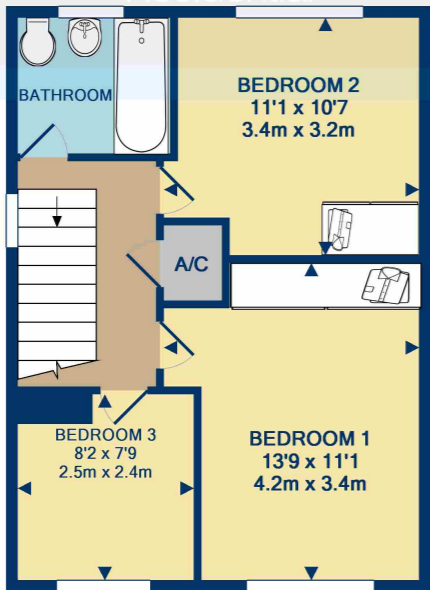


FLOOR PLAN



bond
Residential

GROUND FLOOR
APPROX. FLOOR
AREA 459 SQ.FT.
(42.6 SQ.M.)



1ST FLOOR
APPROX. FLOOR
AREA 412 SQ.FT.
(38.3 SQ.M.)

TOTAL APPROX. FLOOR AREA 871 SQ.FT. (80.9 SQ.M.)
Measurements are approximate. Not to scale. Illustrative purposes only
Made with Metropix ©2018

Rembrandt Grove, Springfield, Chelmsford, Essex, CM1 6GH



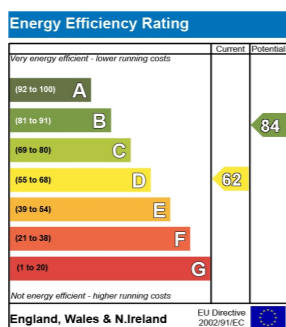
Bond Residential are delighted to offer for sale this detached family residence situated in Springfield.

The property offers an entrance porch, ground floor cloakroom, lounge and fitted kitchen/diner with granite worktops and integrated appliances. To the first floor there are three bedrooms and a family bathroom. Outside the property benefits from a garage and driveway, rear garden with artificial lawn and Home office with double glazed bi-folding doors overlooking the rear garden.

Springfield offers a selection of local primary schools, Boswells high school which is also a performing arts college, a range of local amenities including Sainsbury's superstore and is conveniently located within easy access of the A12, there is also a regular bus service to Chelmsford city centre and mainline station which can also be access via a pleasant riverside walk known as the Bunny Walks, Springfield offers a choice of local parks and open spaces. Chelmsford has become an extremely popular choice for homebuyers due to its proximity to London, some of the most highly regarded schools in the UK and its thriving City Centre. Chelmsford boasts comprehensive shopping facilities which include the highly acclaimed Bond Street shopping precinct as well as a wide array of independent and chain restaurants, many bars and leisure facilities including Riverside Ice Rink. Chelmsford railway station provides regular services to London Liverpool Street with journey times of around 40 minutes.

- Detached Family Residence
- Kitchen/Diner
- Home Office
- Gas Central Heating
- Double Glazed Windows
- Three Bedrooms
- Garage & Driveway

£425,000



01245 500599

www.bondresidential.co.uk

f/bondresidential @bondresidential